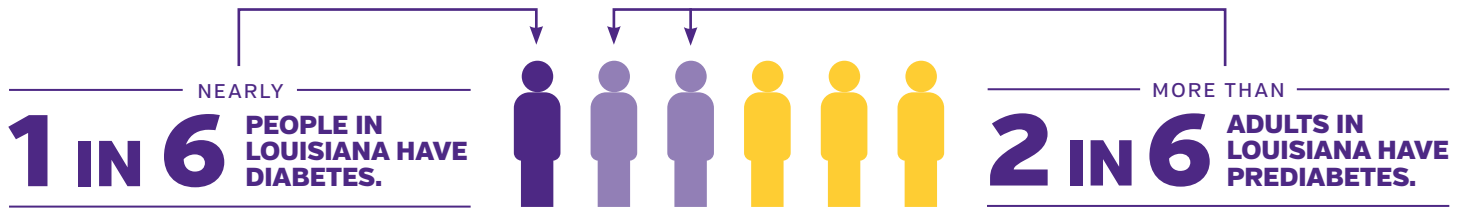


Diabetes costs Louisiana \$5.4 billion each year.



 COMPLICATIONS FROM DIABETES INCLUDE:	STROKE HEART DISEASE	AMPUTATION KIDNEY DISEASE	BLINDNESS DEATH
--	-------------------------	------------------------------	--------------------

LSU research works to promote healthier lives.

- The LSU Pennington Biomedical Research Center is **focused on understanding the underlying inflammatory processes** that cause diabetes. Recent research has led to the **discovery of two new molecules that reduce inflammation** without triggering losses in insulin secretion, a dangerous side effect of steroid-based, anti-inflammatory interventions.
- Researchers at Pennington Biomedical, together with 21 academic sites, determined that **Type 2 diabetes can be prevented** in high-risk individuals.
- Pennington Biomedical will receive \$9.2 million over the next five years from the National Institutes of Health, Office of Dietary Supplements and the National Center for Complementary and Integrative Health to continue work **investigating native plants, botanical extracts and natural products as prospects for the prevention and treatment** of obesity, diabetes, and other chronic diseases.

🔍 PENNINGTON'S RESEARCH SHOWED:

 **7%** LOSS OF AN INDIVIDUAL'S BODY WEIGHT

+ IN ADDITION TO

 **150** MINUTES OF PHYSICAL ACTIVITY PER WEEK

= PRODUCED A

 **58%** REDUCTION IN THE CONVERSION TO DIABETES