



# Institute of Food Technologists

## Greetings from the Chair-Elect

As we approach the end of the 2009-2010 academic year, it is time to reflect on the Louisiana Gulf Coast section IFT meetings. We had an exciting year of events. Our meetings included a tour of the Community Coffee processing facility, a tour of Motivait Seafood, our 2nd annual Supplier's Night, and a presentation on University/ Industry Partnerships by Dr. Mark McLellan, an IFT Distinguished Lecturer from University of Florida - IFAS. I thank you all who participated in these activities and encourage

your continued support and participation. I would like to take this opportunity to thank all students who presented their posters at our 2nd Louisiana Gulf Coast section IFT student poster competition at Suppliers' Night 2010. We also greatly appreciate Drs. Fatemeh Malekian, Ruth Patrick, and John Finley for judging the posters. Feifei Han and Siyi Chen tied for first place. The third-place winner was Reshani Senevirathne, all our food science graduate students. Congratulations to them on their

achievement. Our final meeting will be the annual crawfish boil and student awards ceremony on April 14 at 5:30 p.m. The meeting will take place at the Department of Food Science on the LSU Campus, with GC-IFT 2010 student scholarship winner presentations to follow. I look forward to seeing you all at our final meeting.

Sincerely,  
  
Ashley Gutierrez  
Chair-Elect



### Disclaimer

The opinions expressed in this newsletter are the opinions of the contributors and do not necessarily represent the official position of IFT, nor the Regional Section and should not be interpreted as such.

IFT accepts and adopts the concept of diversity which views society as a mixture of all backgrounds each with a unique contribution. IFT

seeks to retain and celebrate individual differences and therefore will not discriminate based on race, color, gender, sexual orientation, age, religion, national origin, disability or veteran status.



## GULF COAST DIVISION IFT EXECUTIVE COMMITTEE OFFICERS

### CHAIR (8/2009)

**John Finley**  
111 Food Science Building  
Louisiana State University  
Baton Rouge, LA 70803  
(225) 578-5207  
Fax: (225) 578-5300  
jfinley@agcenter.lsu.edu

### CHAIR-ELECT (8/2009)

**Ashley Bond Gutierrez**  
111 Food Science Building  
Louisiana State University  
Baton Rouge, LA 70803  
(225) 578-4380  
Fax: (225) 578-4008  
abond@agcenter.lsu.edu

### SECRETARY (8/2009)

**Joongmin Shin**  
149 Clyde Ingram Hall.  
Louisiana State University  
Baton Rouge, LA 70803  
(225) 578-4462  
Fax: (225) 578-5300  
joshin@agcenter.lsu.edu

### TREASURER (8/2009)

**Miguel A. Gutierrez**  
130 Agricultural Chemistry Bldg.  
LSU Highland Rd.  
Baton Rouge, LA 70803  
(225) 342-2619 Ext. 122  
Fax: (225) 578-5300  
mgutierrez@agcenter.lsu.edu

### MEMBERS AT-LARGE

### Marlene Janes

111 Food Science Building  
Louisiana State University  
Baton Rouge, LA 70803  
(225) 578-5207  
Fax: (225) 578-5300  
jfinley@agcenter.lsu.edu

### Kenneth McMillin

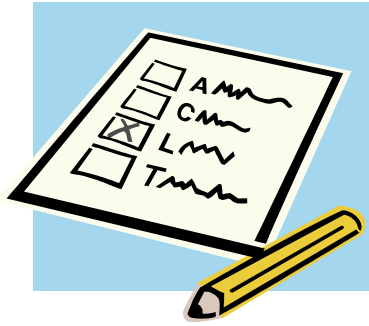
School of Animal Sciences  
116-C J. B. Francioni  
Baton Rouge, LA 70803  
(225) 578-5188

### Inside this issue:

**Crawfish Boil & Student  
Presentation Information** 2

**Driving Directions** 3

**Urgent message** 4



# URGENT

## ALL GCIFT MEMBERS

We must have nominations for the 3 elected positions of Chair-Elect, Secretary, and Treasurer before the past Chair-Elect can develop a ballot for voting and determining our section leaders for next year.

**PLEASE** send all your nominations for these positions (yourself or other members to nominate) to Joongmin Shin at [JoShin@agcenter.lsu.edu](mailto:JoShin@agcenter.lsu.edu)

by **April 12th!**



## Gulf Coast IFT Participates in the Louisiana Science and Engineering Fair

Members of the Louisiana Gulf Coast IFT participated in judging the Louisiana Science and Engineering Fair held on the LSU campus on Mar 28, 2010. High school and middle school students from across the state participated in this event. Awards for 1st, 2nd, and 3rd place were given for the best food science project in the senior and junior level.

Senior Group		
1st	Robert Kroungold	Extract DNA from Animal Tissue
2nd	Asia Richmond	Can You Taste What I Taste?
3rd	John Villarrubia	The Nutraceutical Shakedown: Catching Metals
Junior Group		
1st	Caitlin T. Mikesell	Sizzle, Steam, Boil
2nd	Amanda T. Xiong	The Nose Knows Smell But How About Taste?
3rd	Sonia M. Pereira	Are You Gellin?

## Student Poster Presentations at 6th Annual Louisiana Food Processors Conference

Graduate and undergraduate students were encouraged to register to display their posters at the 6th Annual Louisiana Food Processors Conference on March 17. This was an excellent opportunity for students to showcase their research and network with the Louisiana Food Industry.

**Feifei Han:**

Characterization of two genotypes of *Vibrio vulnificus* from Louisiana oysters



**Siyi Chen:**

A toxR-Based Real-Time Loop-Mediated Isothermal Amplification Assay for Detecting *Vibrio parahaemolyticus*



**Reshani Senevirathne:**

Dietary Resistant Starch Increases Bifidobacterium spp./ Lactobacillus spp. and Clostridia spp. in the Gut of Mice Fed Low and Moderate Fat Diets



### Louisiana Gulf Coast IFT Supplier's Night a Success

The IFT Supplier's Night held in conjunction with the 6th Annual Louisiana Food Processors Conference was a success. Both local and national vendors attended this event. We are looking forward to continued success each year for this important event!





## Meeting Notice

April 14, 2010

5:30—8:00p.m.

## **CRAWFISH BOIL & STUDENT PRESENTATIONS**

Food Science Building  
Louisiana State University  
Baton Rouge, LA 70803

You are invited to bring your friends and family members

**Please reply by April 10!**

### Meeting Registration

Name \_\_\_\_\_

Address \_\_\_\_\_

City \_\_\_\_\_

State \_\_\_\_\_

Zip \_\_\_\_\_

Phone \_\_\_\_\_

Email \_\_\_\_\_

Please		Cost
	Faculty	\$20.00
	Student	\$10.00
	Guest	\$20.00

Mail your registration & payment (cash or check) to:

Joongmin Shin

111 Food Science Building

Louisiana State University

Baton Rouge, LA 70803

Or email it to [abond@agcenter.lsu.edu](mailto:abond@agcenter.lsu.edu)



### a COMMITTEE CHAIRS (2009/2010)

#### Membership

**Fatemeh Malekian**

[fatemeh\\_malekian@suagcenter.com](mailto:fatemeh_malekian@suagcenter.com)

#### Newsletter

**Joongmin Shin**

[joshin@agcenter.lsu.edu](mailto:joshin@agcenter.lsu.edu)

#### Nominations

**Bellei Ge**

[bge@lsu.edu](mailto:bge@lsu.edu)

#### Program

**Ashley Gutierrez**

[abond@agcenter.lsu.edu](mailto:abond@agcenter.lsu.edu)

#### Publicity

**Ruth Patrick**

[rmpatrick@yahoo.com](mailto:rmpatrick@yahoo.com)

#### Student Affairs

**Karen Garcia**

[Kgarci2@lsu.edu](mailto:Kgarci2@lsu.edu)

#### Scholarships

**Mary An Godshall**

[godshall@srrc.ars.usda.gov](mailto:godshall@srrc.ars.usda.gov)

**John Reuther**

[jreuther@centralanalytical.com](mailto:jreuther@centralanalytical.com)

#### Science Fair

**Joan King**

[jking@agcenter.lsu.edu](mailto:jking@agcenter.lsu.edu)

#### Web Site

**Zhimin Xu**

[zxu@agcenter.lsu.edu](mailto:zxu@agcenter.lsu.edu)

## LA Gulf Coast Section Newsletter

c/o Joongmin Shin

Phone (225) 578-6304

Fax (225) 578-5300

[abond@agcenter.lsu.edu](mailto:abond@agcenter.lsu.edu)



## DRIVING DIRECTIONS

### Meeting Notice

April 14, 2010

5:30—8:00 p.m.

### **CRAWFISH BOIL & STUDENT PRESENTATIONS**

Food Science Building  
Louisiana State University  
Baton Rouge, LA 70803

