

**LSU**  
**Deposit and Collateral Report**  
**June 30, 2024**

<b>Deposits Requiring Posting of Collateral:</b>	<b>Demand Deposit Sweep/MMA Repurchase</b>	<b>Certificates of Deposit</b>	<b>Total Deposits in Financial Institutions</b>	<b>Collateral (1)</b>
<b>LSU A&amp;M, LSU Alexandria, LSU Eunice, LSU Shreveport, and LSU Health New Orleans</b>				
Chase - LSU, Health Plan Premium	\$ 70,155,928		\$ 70,155,928	\$ 187,000,000
Cottonport Bank - LSU Ag Center	4,586,276		\$ 4,586,276	4,977,534
Capital One - LSU-A	11,266,868		\$ 11,266,868	11,302,944
St. Landry Bank - LSU-E	593,299		\$ 593,299	1,817,744
Campus Federal Credit Union - LSU-S		\$ 101,599	\$ 101,599	250,000
Capital One - LSU-S	57,406,222		\$ 57,406,222	58,299,347
Chase - HSCNO	108,800,520	18,600	\$ 108,819,120	160,000,000
<b>Total</b>	<b>\$ 252,809,113</b>	<b>\$ 120,199</b>	<b>\$ 252,929,312</b>	<b>\$ 423,647,569</b>
<b>LSU Health Shreveport</b>				
JPMC-Shreveport	\$ 76,936,672		\$ 76,936,672	\$ 95,250,000
JPMC-Shreveport Endowment Fds	1,324,858		1,324,858	
<b>Total</b>	<b>\$ 78,261,530</b>	<b>\$ -</b>	<b>\$ 78,261,530</b>	<b>\$ 95,250,000</b>
<b>LSU Health Care Services Division</b>				
JP Morgan Chase (HCSD)	\$ 89,394,210		\$ 89,394,210	\$ 111,303,870
Capital One (MCLNO Trust Fund)	5,828,302		\$ 5,828,302	5,939,869
<b>Total</b>	<b>\$ 95,222,512</b>	<b>\$ -</b>	<b>\$ 95,222,512</b>	<b>\$ 117,243,739</b>
<b>Total Requiring Collateral</b>	<b>\$ 426,293,155</b>	<b>\$ 120,199</b>	<b>\$ 426,413,354</b>	<b>\$ 636,141,308</b>
<b>Deposits In Trust or Federal Obligations Not Requiring Collateral</b>				
Federated Money Markets	\$ 9,740,375		\$ 9,740,375	
Federated Funds-Treas. Oblig. (2)	24,686,431		\$ 24,686,431	
<b>Total</b>	<b>\$ 34,426,806</b>	<b>\$ -</b>	<b>\$ 34,426,806</b>	
<b>Total Deposits</b>	<b>\$ 460,719,961</b>	<b>\$ 120,199</b>	<b>\$ 460,840,160</b>	

(1) Collateral amounts include FDIC coverage of \$250,000 on Demand Deposits, \$250,000 on CD's and \$250,000 by the National Credit Union Share Insurance Fund on deposits with Campus Federal Credit Union.

(2) One Group & Federated Funds are no-load, open ended mutual funds investing in U.S. Treasury obligations.

**LSU**  
**Investment Summary**  
**June 30, 2024**

Fund Description	As of 7/1/2023		As of 9/30/2023		As of 12/31/2023		As of 3/31/2024		As of 06/30/2024	
	Value	Cost	Market Value	Cost	Market Value	Cost	Market Value	Cost	Market Value	
<b>Current Funds</b>										
Cash/Sweeps	\$401,144,460	\$528,798,984	\$528,798,984	\$467,698,460	\$467,698,460	\$566,337,679	\$566,337,679	\$419,139,995	\$419,139,995	
Money Market Accounts/Repos	\$2,472,544	\$1,269,169	\$1,269,169	\$4,788,277	\$4,788,277	\$6,637,322	\$6,637,322	\$162,000	\$162,000	
Certificates of Deposit	\$100,975	\$100,984	\$100,984	\$101,304	\$101,304	\$101,303	\$101,303	\$101,599	\$101,599	
Treasury Notes	\$60,289,099	\$67,892,292	\$63,312,918	\$90,454,735	\$90,086,864	\$93,910,498	\$92,756,064	\$96,851,529	\$95,651,752	
CMO's	\$0	\$0	\$0	\$0	\$0	\$0	\$0	\$0	\$0	
Agency Securities	\$115,056,924	\$137,193,831	\$110,552,134	\$129,621,052	\$110,258,881	\$125,066,002	\$104,253,561	\$124,990,219	\$104,514,609	
Mortgaged Backed Securities	\$3,182,656	\$19,633,568	\$18,842,665	\$19,546,540	\$19,569,633	\$19,195,881	\$19,153,410	\$19,138,114	\$19,117,171	
Equity Securities	\$86,547	\$0	\$96,315	\$0	\$101,245	\$0	\$113,462	\$0	\$107,461	
Municipal Bonds	\$169,963,432	\$231,924,804	\$185,890,241	\$219,385,984	\$185,896,307	\$228,903,469	\$197,694,276	\$227,125,598	\$194,228,402	
Corporate Bonds	\$274,503,773	\$324,203,753	\$274,795,135	\$316,142,524	\$282,416,723	\$304,541,970	\$271,344,480	\$302,296,035	\$268,710,550	
<b>Total</b>	<b>\$1,026,800,410</b>	<b>\$1,311,017,385</b>	<b>\$1,183,658,545</b>	<b>\$1,247,738,876</b>	<b>\$1,160,917,694</b>	<b>\$1,344,694,124</b>	<b>\$1,258,391,557</b>	<b>\$1,189,805,089</b>	<b>\$1,101,733,539</b>	
<b>Endowment Funds</b>										
Cash/Sweeps	\$3,868,729	\$845,612	\$845,612	\$788,244	\$788,244	\$1,769,383	\$1,769,383	\$1,324,858	\$1,324,858	
Money Market Accounts/Repos	\$1,064,161	\$377,327	\$377,327	\$584,514	\$584,514	\$826,290	\$826,290	\$0	\$0	
Certificates of Deposit	\$18,600	\$18,600	\$18,600	\$18,600	\$18,600	\$18,600	\$18,600	\$18,600	\$18,600	
Agency Securities	\$2,028,457	\$2,481,905	\$1,935,001	\$2,481,905	\$2,069,832	\$2,449,194	\$2,044,023	\$2,445,369	\$2,050,275	
Mortgaged Backed Securities	\$948,575	\$985,736	\$931,033	\$998,518	\$949,660	\$960,479	\$910,593	\$955,727	\$907,291	
Equity Securities	\$9,517,525	\$4,496,352	\$9,185,173	\$4,496,352	\$10,153,221	\$4,496,352	\$10,945,745	\$4,346,714	\$10,202,408	
Mutual Funds	\$75,797,920	\$74,477,431	\$73,883,043	\$75,812,938	\$80,226,286	\$73,919,408	\$79,130,575	\$74,732,657	\$80,107,064	
Municipal Bonds	\$3,133,144	\$4,008,609	\$2,976,986	\$3,993,125	\$3,147,989	\$3,888,614	\$3,152,348	\$3,881,810	\$3,136,742	
Corporate Bonds	\$8,176,112	\$10,339,867	\$9,010,444	\$10,339,867	\$9,477,621	\$10,131,650	\$9,415,459	\$11,120,198	\$10,392,584	
<b>Total</b>	<b>\$104,553,223</b>	<b>\$98,031,439</b>	<b>\$99,163,220</b>	<b>\$99,514,063</b>	<b>\$107,415,967</b>	<b>\$98,459,970</b>	<b>\$108,213,016</b>	<b>\$98,825,933</b>	<b>\$108,139,822</b>	
<b>Other Funds</b>										
Cash/Sweeps	\$5,572,032	\$5,645,384	\$5,645,384	\$5,786,509	\$5,786,509	\$5,659,202	\$5,659,202	\$5,828,302	\$5,828,302	
Money Market Accounts/Repos	\$33,663,740	\$9,711,341	\$9,711,341	\$14,850,817	\$14,850,817	\$9,968,841	\$9,968,841	\$34,264,806	\$34,264,806	
Equity Securities	\$531,960	\$0	\$583,197	\$0	\$433,913	\$0	\$576,550	\$0	\$570,995	
<b>Total</b>	<b>\$39,767,732</b>	<b>\$15,356,725</b>	<b>\$15,939,922</b>	<b>\$20,637,326</b>	<b>\$21,071,239</b>	<b>\$15,628,043</b>	<b>\$16,204,593</b>	<b>\$40,093,108</b>	<b>\$40,664,103</b>	
<b>Grand Total</b>	<b>\$1,171,121,365</b>	<b>\$1,424,405,548</b>	<b>\$1,298,761,687</b>	<b>\$1,367,890,265</b>	<b>\$1,289,404,900</b>	<b>\$1,458,782,137</b>	<b>\$1,382,809,166</b>	<b>\$1,328,724,130</b>	<b>\$1,250,537,464</b>	
<b>Deposits in Financial Institutions</b>										
Total Cash/Sweeps/MMA/Repos	\$447,785,666	\$546,647,817	\$546,647,817	\$494,496,821	\$494,496,821	\$591,198,717	\$591,198,717	\$460,719,961	\$460,719,961	
Total Certificates of Deposit	\$119,575	\$119,584	\$119,584	\$119,904	\$119,904	\$119,903	\$119,903	\$120,199	\$120,199	
<b>Total Deposits</b>	<b>\$447,905,241</b>	<b>\$546,767,401</b>	<b>\$546,767,401</b>	<b>\$494,616,725</b>	<b>\$494,616,725</b>	<b>\$591,318,620</b>	<b>\$591,318,620</b>	<b>\$460,840,160</b>	<b>\$460,840,160</b>	
<b>Other Investments</b>										
Treasury Notes	\$60,289,099	\$67,892,292	\$63,312,918	\$90,454,735	\$90,086,864	\$93,910,498	\$92,756,064	\$96,851,529	\$95,651,752	
CMO's	\$0	\$0	\$0	\$0	\$0	\$0	\$0	\$0	\$0	
Agency Securities	\$117,085,381	\$139,675,736	\$112,487,135	\$132,102,957	\$112,328,713	\$127,515,196	\$106,297,584	\$127,435,588	\$106,564,884	
Mortgaged Backed Securities	\$4,131,231	\$20,619,304	\$19,773,698	\$20,545,058	\$20,519,293	\$20,156,360	\$20,064,003	\$20,093,841	\$20,024,462	
Equity Securities	\$10,136,032	\$4,496,352	\$9,864,686	\$4,496,352	\$10,688,379	\$4,496,352	\$11,635,575	\$4,346,714	\$10,880,864	
Mutual Funds	\$75,797,920	\$74,477,431	\$73,883,043	\$75,812,938	\$80,226,286	\$73,919,408	\$79,130,575	\$74,732,657	\$80,107,064	
Municipal Bonds	\$173,096,576	\$235,933,413	\$188,867,227	\$223,379,109	\$189,044,296	\$232,792,083	\$200,846,624	\$231,007,408	\$197,365,144	
Corporate Bonds	\$282,679,885	\$334,543,620	\$283,805,579	\$326,482,391	\$291,894,344	\$314,673,620	\$280,759,939	\$313,416,233	\$279,103,134	
<b>Total Other</b>	<b>\$723,216,124</b>	<b>\$877,638,147</b>	<b>\$751,994,286</b>	<b>\$873,273,540</b>	<b>\$794,788,175</b>	<b>\$867,463,517</b>	<b>\$791,490,546</b>	<b>\$867,883,970</b>	<b>\$789,697,304</b>	
<b>Grand Total</b>	<b>\$1,171,121,365</b>	<b>\$1,424,405,548</b>	<b>\$1,298,761,687</b>	<b>\$1,367,890,265</b>	<b>\$1,289,404,900</b>	<b>\$1,458,782,137</b>	<b>\$1,382,809,166</b>	<b>\$1,328,724,130</b>	<b>\$1,250,537,464</b>	
<b>LSU Paid Campuses</b>										
<b>Current Funds</b>										
Cash/Sweeps	\$238,094,623	\$349,485,606	\$349,485,606	\$294,029,971	\$294,029,971	\$382,277,913	\$382,277,913	\$252,809,113	\$252,809,113	
Money Market Accounts/Repos	\$2,472,544	\$1,269,169	\$1,269,169	\$4,788,277	\$4,788,277	\$6,637,322	\$6,637,322	\$162,000	\$162,000	
Certificates of Deposit	\$100,975	\$100,984	\$100,984	\$101,304	\$101,304	\$101,303	\$101,303	\$101,599	\$101,599	
Treasury Notes	\$8,714,844	\$9,920,313	\$8,603,906	\$9,920,313	\$8,947,266	\$9,955,154	\$8,862,891	\$9,958,008	\$8,883,984	
CMO's	\$0	\$0	\$0	\$0	\$0	\$0	\$0	\$0	\$0	
Agency Securities	\$106,383,465	\$127,557,347	\$101,952,888	\$127,557,347	\$108,255,044	\$123,024,843	\$102,253,214	\$122,971,928	\$102,516,243	
Mortgaged Backed Securities	\$3,172,212	\$19,622,271	\$18,832,303	\$19,535,386	\$19,559,258	\$19,184,871	\$19,143,127	\$19,127,232	\$19,106,993	
Equity Securities	\$86,547	\$0	\$96,315	\$0	\$101,245	\$0	\$113,462	\$0	\$107,461	
Municipal Bonds	\$154,080,067	\$214,097,580	\$170,135,562	\$214,097,580	\$180,797,374	\$223,644,891	\$192,616,479	\$222,756,550	\$190,264,521	
Corporate Bonds	\$238,861,720	\$288,169,917	\$241,328,627	\$288,528,667	\$256,115,783	\$280,491,041	\$248,587,941	\$280,297,639	\$247,934,466	
<b>Total</b>	<b>\$751,966,997</b>	<b>\$1,010,223,187</b>	<b>\$891,805,360</b>	<b>\$958,558,845</b>	<b>\$872,695,522</b>	<b>\$1,045,317,338</b>	<b>\$960,593,652</b>	<b>\$908,184,069</b>	<b>\$821,886,380</b>	
<b>Endowment Funds</b>										
Money Market Accounts/Repos	\$1,064,161	\$377,327	\$377,327	\$584,514	\$584,514	\$826,290	\$826,290	\$0	\$0	
Certificates of Deposit	\$18,600	\$18,600	\$18,600	\$18,600	\$18,600	\$18,600	\$18,600	\$18,600	\$18,600	
Agency Securities	\$2,028,457	\$2,481,905	\$1,935,001	\$2,481,905	\$2,069,832	\$2,449,194	\$2,044,023	\$2,445,369	\$2,050,275	
Mortgaged Backed Securities	\$948,575	\$985,736	\$931,033	\$998,518	\$949,660	\$960,479	\$910,593	\$955,727	\$907,291	
Equity Securities	\$9,499,759	\$4,488,702	\$9,169,301	\$4,488,702	\$10,136,084	\$4,488,702	\$10,927,578	\$4,339,064	\$10,183,895	
Municipal Bonds	\$3,133,144	\$4,008,609	\$2,976,986	\$3,993,125	\$3,147,989	\$3,888,614	\$3,152,348	\$3,881,810	\$3,136,742	
Corporate Bonds	\$8,176,112	\$10,339,867	\$9,010,444	\$10,339,867	\$9,477,621	\$10,131,650	\$9,415,459	\$11,120,198	\$10,392,584	
<b>Total</b>	<b>\$24,868,808</b>	<b>\$22,700,746</b>	<b>\$24,418,693</b>	<b>\$22,905,231</b>	<b>\$26,384,300</b>	<b>\$22,763,529</b>	<b>\$27,294,891</b>	<b>\$22,760,768</b>	<b>\$26,689,387</b>	
<b>Other Funds</b>										
Money Market Accounts/Repos	\$24,408,839	\$338,926	\$338,926	\$5,356,794	\$5,356,794	\$353,576	\$353,576	\$24,524,431	\$24,524,431	
<b>Total</b>	<b>\$24,408,839</b>	<b>\$338,926</b>	<b>\$338,926</b>	<b>\$5,356,794</b>	<b>\$5,356,794</b>	<b>\$353,576</b>	<b>\$353,576</b>	<b>\$24,524,431</b>	<b>\$24,524,431</b>	
<b>Grand Total</b>	<b>\$801,244,644</b>	<b>\$1,033,262,858</b>	<b>\$916,562,979</b>	<b>\$986,820,870</b>	<b>\$904,436,616</b>	<b>\$1,068,434,443</b>	<b>\$988,242,119</b>	<b>\$955,469,268</b>	<b>\$873,100,198</b>	

LSU  
Investment Summary  
June 30, 2024

Fund Description	As of 7/1/2023	As of 9/30/2023		As of 12/31/2023		As of 3/31/2024		As of 06/30/2024	
	Value	Cost	Market Value	Cost	Market Value	Cost	Market Value	Cost	Market Value
<b>LSU Health Shreveport</b>									
<b>Current Funds</b>									
Cash/Sweeps S.	\$74,535,699	\$87,249,182	\$87,249,182	\$82,882,784	\$82,882,784	\$89,689,105	\$89,689,105	\$76,936,672	\$76,936,672
<b>Cash/Sweeps</b>	<b>\$74,535,699</b>	<b>\$87,249,182</b>	<b>\$87,249,182</b>	<b>\$82,882,784</b>	<b>\$82,882,784</b>	<b>\$89,689,105</b>	<b>\$89,689,105</b>	<b>\$76,936,672</b>	<b>\$76,936,672</b>
Treasury Notes	\$51,574,255	\$57,971,979	\$54,709,012	\$80,534,422	\$81,139,598	\$83,955,344	\$83,893,173	\$86,893,521	\$86,767,768
Agency Securities	\$8,673,459	\$9,636,484	\$8,599,246	\$2,063,705	\$2,003,837	\$2,041,159	\$2,000,347	\$2,018,291	\$1,998,366
Mortgaged Backed Securities	\$10,444	\$11,297	\$10,362	\$11,154	\$10,375	\$11,010	\$10,283	\$10,882	\$10,178
Municipal Bonds	\$15,883,365	\$17,827,224	\$15,754,679	\$5,288,404	\$5,098,933	\$5,258,578	\$5,077,797	\$4,369,048	\$3,963,881
Corporate Bonds	\$35,642,053	\$36,033,836	\$33,466,508	\$27,613,857	\$26,300,940	\$24,050,929	\$22,756,539	\$21,998,396	\$20,776,084
<b>Total</b>	<b>\$186,319,275</b>	<b>\$208,730,002</b>	<b>\$199,788,989</b>	<b>\$198,394,326</b>	<b>\$197,436,467</b>	<b>\$205,006,125</b>	<b>\$203,427,244</b>	<b>\$192,226,810</b>	<b>\$190,452,949</b>
<b>Endowment Funds</b>									
Cash/Sweeps	\$3,868,729	\$845,612	\$845,612	\$788,244	\$788,244	\$1,769,383	\$1,769,383	\$1,324,858	\$1,324,858
Equity Securities	\$17,766	\$7,650	\$15,872	\$7,650	\$17,137	\$7,650	\$18,167	\$7,650	\$18,513
Mutual Funds	\$75,797,920	\$74,477,431	\$73,883,043	\$75,812,938	\$80,226,286	\$73,919,408	\$79,130,575	\$74,732,657	\$80,107,064
<b>Total</b>	<b>\$79,684,415</b>	<b>\$75,330,693</b>	<b>\$74,744,527</b>	<b>\$76,608,832</b>	<b>\$81,031,667</b>	<b>\$75,696,441</b>	<b>\$80,918,125</b>	<b>\$76,065,165</b>	<b>\$81,450,435</b>
<b>Grand Total</b>	<b>\$266,003,690</b>	<b>\$284,060,695</b>	<b>\$274,533,516</b>	<b>\$275,003,158</b>	<b>\$278,468,134</b>	<b>\$280,702,566</b>	<b>\$284,345,369</b>	<b>\$268,291,975</b>	<b>\$271,903,384</b>
<b>LSU HCSD</b>									
<b>Current Funds</b>									
Cash/Sweeps	\$88,514,138	\$92,064,196	\$92,064,196	\$90,785,705	\$90,785,705	\$94,370,661	\$94,370,661	\$89,394,210	\$89,394,210
<b>Total</b>	<b>\$88,514,138</b>	<b>\$92,064,196</b>	<b>\$92,064,196</b>	<b>\$90,785,705</b>	<b>\$90,785,705</b>	<b>\$94,370,661</b>	<b>\$94,370,661</b>	<b>\$89,394,210</b>	<b>\$89,394,210</b>
<b>Other Funds</b>									
Cash/Sweeps	\$5,572,032	\$5,645,384	\$5,645,384	\$5,786,509	\$5,786,509	\$5,659,202	\$5,659,202	\$5,828,302	\$5,828,302
Money Market Accounts/Repos	\$9,254,901	\$9,372,415	\$9,372,415	\$9,494,023	\$9,494,023	\$9,615,265	\$9,615,265	\$9,740,375	\$9,740,375
Equity Securities	\$531,960	\$583,197	\$583,197	\$433,913	\$433,913	\$576,550	\$576,550	\$570,995	\$570,995
<b>Total</b>	<b>\$15,358,893</b>	<b>\$15,017,999</b>	<b>\$15,600,996</b>	<b>\$15,280,532</b>	<b>\$15,714,445</b>	<b>\$15,274,467</b>	<b>\$15,851,017</b>	<b>\$15,568,677</b>	<b>\$16,139,672</b>
<b>Grand Total</b>	<b>\$103,873,031</b>	<b>\$107,081,995</b>	<b>\$107,665,192</b>	<b>\$106,066,237</b>	<b>\$106,500,150</b>	<b>\$109,645,128</b>	<b>\$110,221,678</b>	<b>\$104,962,887</b>	<b>\$105,533,882</b>
<b>System Total</b>	<b>\$1,171,121,365</b>	<b>\$1,424,405,548</b>	<b>\$1,298,761,687</b>	<b>\$1,367,890,265</b>	<b>\$1,289,404,900</b>	<b>\$1,458,782,137</b>	<b>\$1,382,809,166</b>	<b>\$1,328,724,130</b>	<b>\$1,250,537,464</b>

\* Negative balance in the cash/Sweeps section of the current funds does not represent an actual negative bank balance, rather it represents a timing difference of the allocation of the current funds.

\*\* Small endowment funds at LSUS were moved to the LSUS Foundation to accommodate Workday.

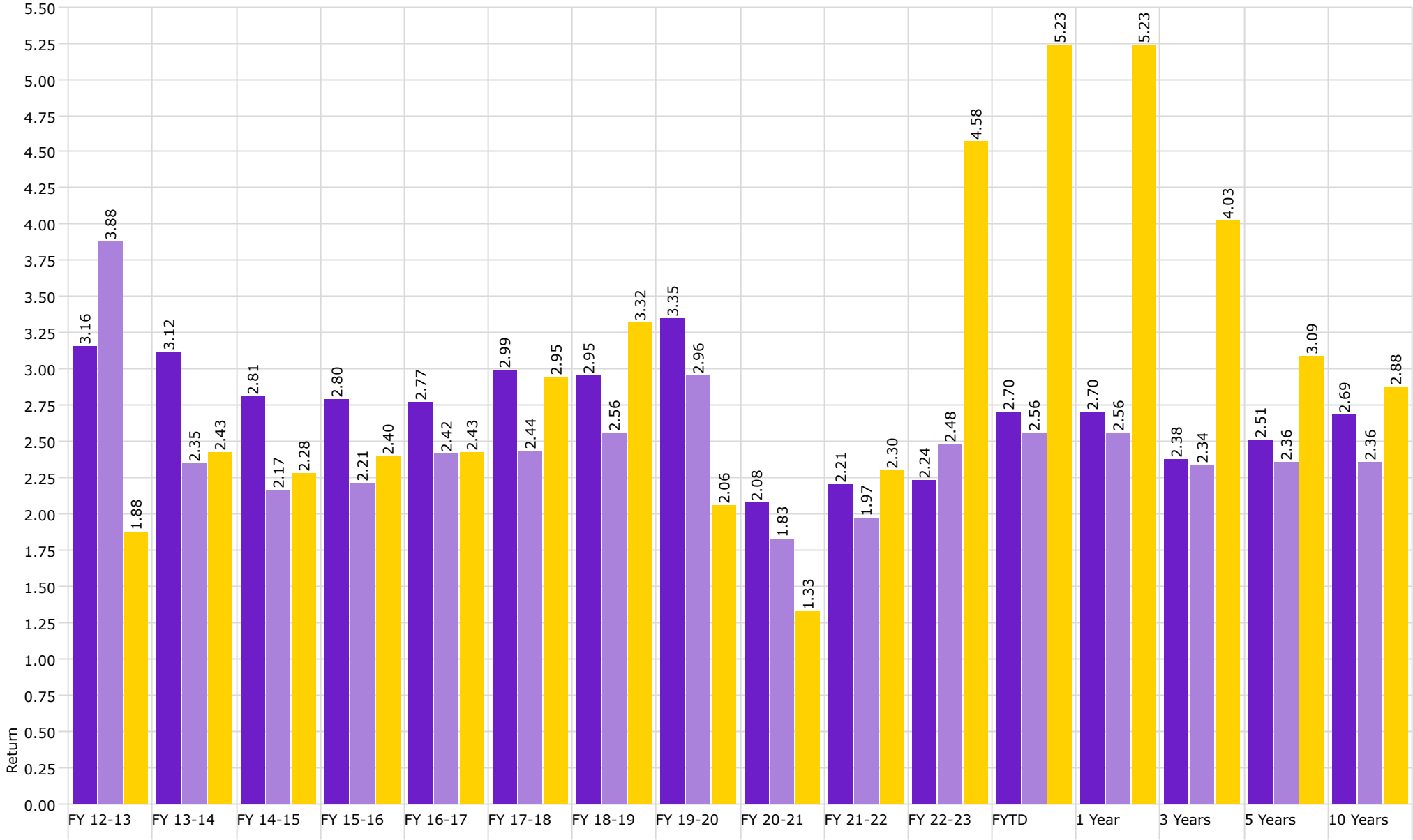
\*\*\* LSU Paid Campuses include the following: LSU, LSU Ag Center, LSUA, LSUE, LSUS, LSU Health New Orleans, and the LSU Pennington Biomedical Research Center.

Disclaimer: Pursuant to PM-9, corporate bonds/notes only available for investment beginning 7-1-2011. Louisiana law provides for restrictions on maturity and allocation and may effect benchmark comparisons.



# Investment Management Program Non Endowed Accounts **Realized Yield**

As of 6/30/2024



■ Non Endowed

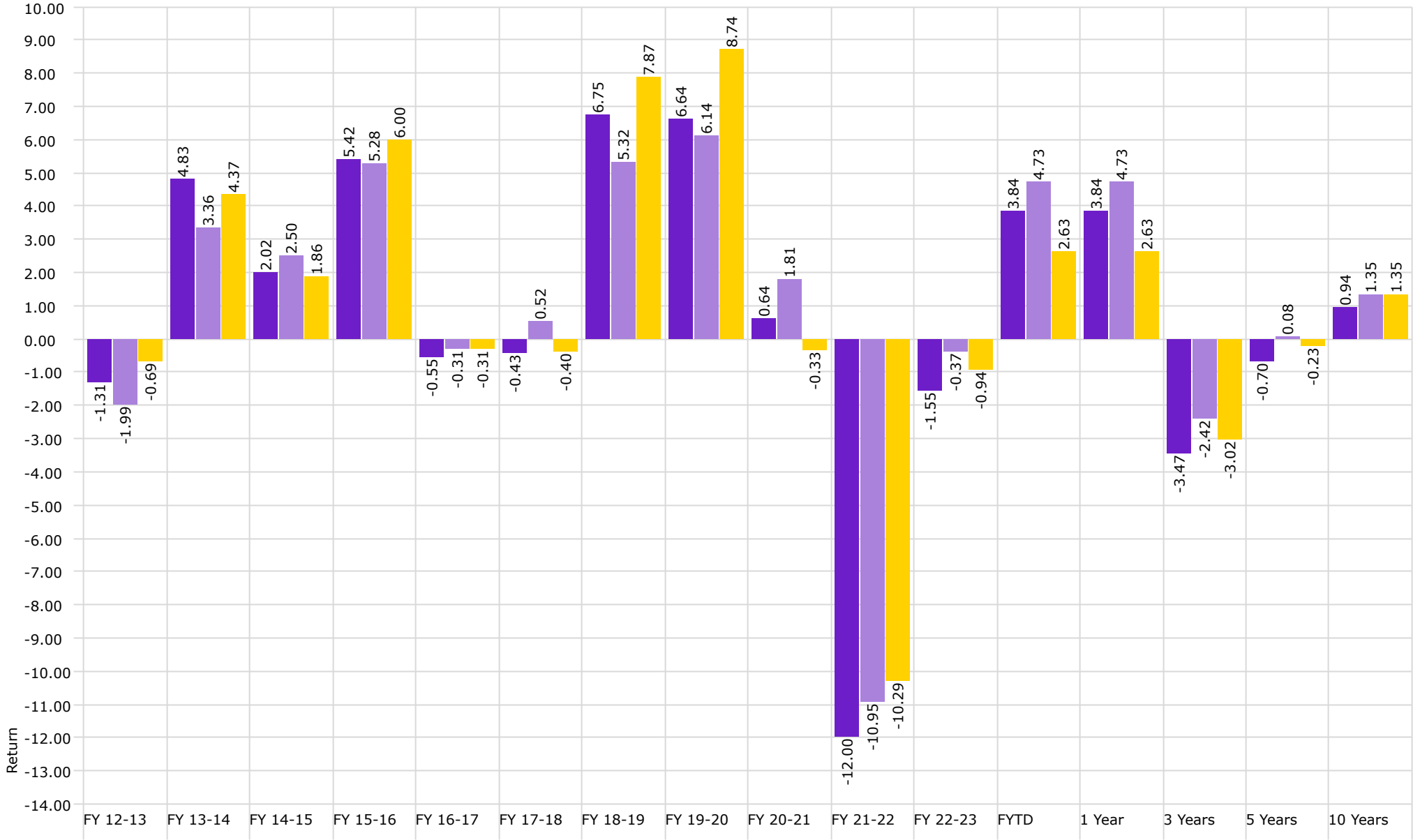
■ Health Plan

■ Barclays Aggregate Bond Index



# Investment Management Program Non Endowed Accounts **Total Return**

As of 6/30/2024



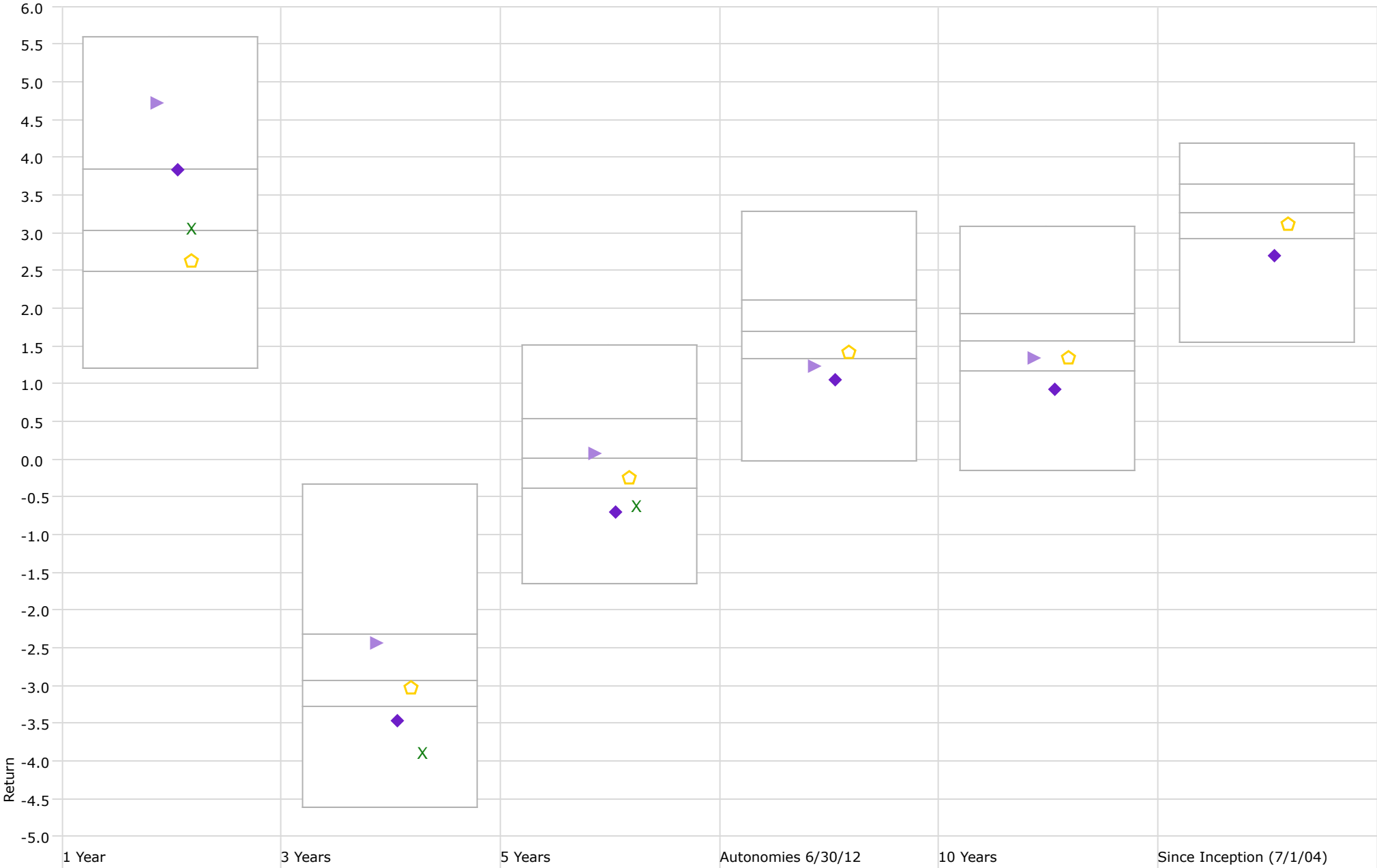
■ Non Endowed

■ Health Plan

■ Barclays Aggregate Bond Index

# Performance Relative to Peer Group

Peer Group (5-95%): All Managed Investments - U.S. - Intermediate Core Bond

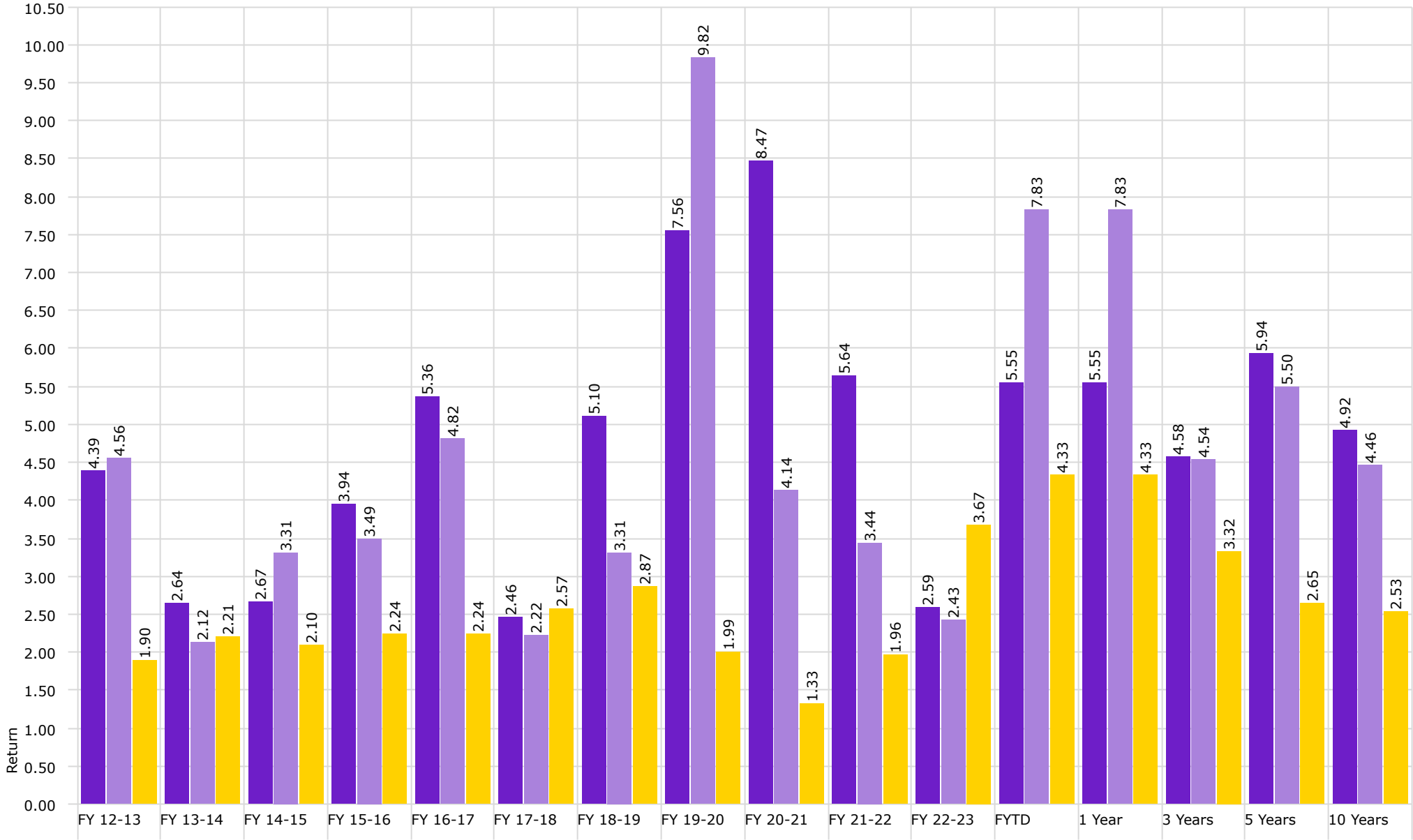


◆ Non-Ended      ▶ Health Plan      X Modified Barclays Agg Bond Index      ◐ Barclays Aggregate Bond Index



# Investment Management Program Endowed Accounts **Realized Yield**

As of 6/30/2024



Endowment

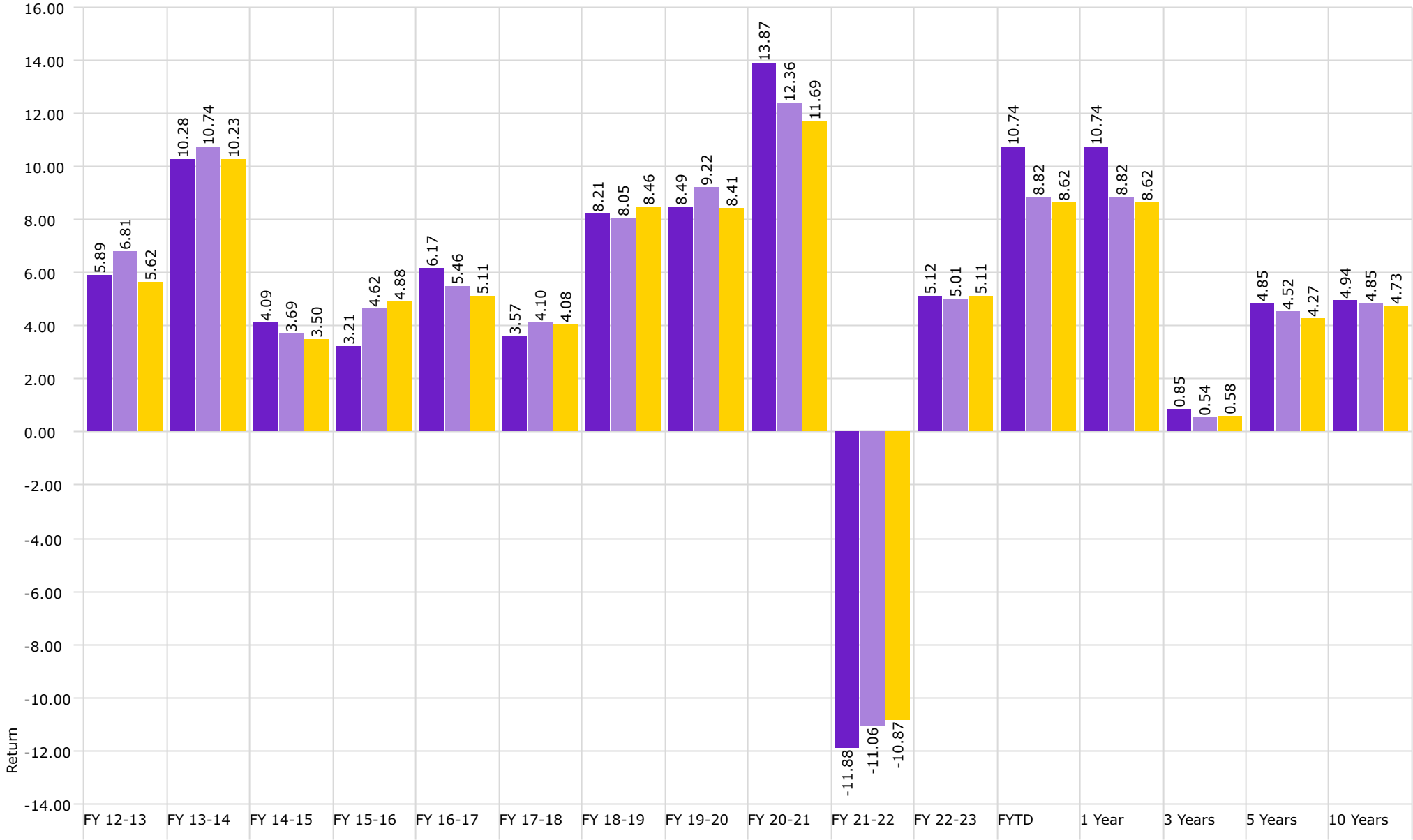
Osher

Endowed Realized Yield



# Investment Management Program Endowed Accounts **Total Return**

As of 6/30/2024



Endowment

Osher

Endowed Benchmark