

LSU
Deposit and Collateral Report
For the Quarter Ended December 31, 2018

Deposits Requiring Posting of Collateral:	Demand Deposit Sweep/MMA Repurchase	Certificates of Deposit	Total Deposits in Financial Institutions	Collateral (1)
LSU A&M, LSU Alexandria, LSU Eunice, LSU Shreveport, and LSU Health New Orleans				
Chase - LSU, Health Plan Premium	\$ 81,297,681		\$ 81,297,681	\$ 125,000,000
Cottonport Bank-LSU Ag Center	1,185,484		1,185,484	1,432,494
Capital One - LSU-A	1,704,758		1,704,758	1,704,758
St. Landry Bank - LSU-E	784,679		784,679	1,245,778
Campus Federal Credit Union - LSU-S		\$ 100,335	100,335	250,000
Capital One (Hibernia National Bank) - LSU-S	16,221,921		16,221,921	16,453,008
Chase-HSCNO	42,212,154	18,600	42,230,754	46,900,986
Total	\$ 143,406,677	\$ 118,935	\$ 143,525,612	\$ 192,987,024
LSU Health Shreveport				
JPMC-Shreveport	\$ 75,562,440		\$ 75,562,440	\$ 100,428,529
JPMC-Shreveport Endowment Fds	10,039,731		10,039,731	-
Total	\$ 85,602,171	\$ -	\$ 85,602,171	\$ 100,428,529
LSU Health Care Services Division				
JP Morgan Chase (HCSD)	\$ 101,209,308		\$ 101,209,308	\$ 102,836,728
Capital One (MCLNO Trust Fund)	3,737,567		3,737,567	3,832,120
Total	\$ 104,946,875	\$ -	\$ 104,946,875	\$ 106,668,848
Total Requiring Collateral	\$ 333,955,723	\$ 118,935	\$ 334,074,658	\$ 400,084,401
Deposits In Trust or Federal Obligations Not Requiring Collateral				
Federated Money Markets	\$ 20,155,973		\$ 20,155,973	
Federated Funds-Treas. Oblig. (2)				-
Total	\$ 20,155,973	\$ -	\$ 20,155,973	
Total Deposits	\$ 354,111,696	\$ 118,935	\$ 354,230,631	

- (1) Collateral amounts include FDIC coverage of \$250,000 on Demand Deposits, \$250,000 on CD's and \$250,000 by the National Credit Union Share Insurance Fund on deposits with Campus Federal Credit Union.
- (2) One Group & Federated Funds are no-load, open ended mutual funds investing in U.S. Treasury obligations.

LSU
Investment Summary
For the Quarter Ended December 31, 2018

Fund Description	As of 7/1/2018	As of 9/30/2018		As of 12/31/2018		As of 3/31/2019		As of 06/30/2019	
	Value	Cost	Market Value	Cost	Market Value	Cost	Market Value	Cost	Market Value
Current Funds									
Cash/Sweeps	\$328,817,689	\$341,354,052	\$341,354,052	\$320,178,425	\$320,178,425	\$0	\$0	\$0	\$0
Money Market Accounts/Repos (A)	\$28,531	\$1,086,482	\$1,086,482	\$1,199,033	\$1,199,033	\$0	\$0	\$0	\$0
Certificates of Deposit	\$100,239	\$100,239	\$100,239	\$100,335	\$100,335	\$0	\$0	\$0	\$0
Treasury Notes	\$6,431,371	\$6,457,022	\$6,411,798	\$21,788,628	\$22,050,453	\$0	\$0	\$0	\$0
CMO's	\$12,194	\$1,191	\$1,178	\$0	\$0	\$0	\$0	\$0	\$0
Agency Securities (B)	\$111,198,710	\$116,452,882	\$109,942,126	\$119,408,596	\$115,012,860	\$0	\$0	\$0	\$0
Mortgaged Backed Securities	\$24,883,702	\$23,491,867	\$22,471,167	\$30,072,527	\$29,491,294	\$0	\$0	\$0	\$0
Equity Securities (C)	\$66,752	\$0	\$71,528	\$0	\$62,863	\$0	\$0	\$0	\$0
Bond Mutual Funds	\$43,624,820	\$46,697,531	\$42,755,183	\$46,697,531	\$42,326,162	\$0	\$0	\$0	\$0
Municipal Bonds (E)	\$86,777,337	\$89,832,231	\$83,897,325	\$88,856,377	\$83,988,942	\$0	\$0	\$0	\$0
Corporate Bonds (D)	\$109,778,076	\$173,924,058	\$166,928,153	\$208,643,687	\$201,569,802	\$0	\$0	\$0	\$0
Total	\$711,719,421	\$799,397,555	\$775,019,231	\$836,945,139	\$815,980,169	\$0	\$0	\$0	\$0
Endowment Funds									
Cash/Sweeps	\$10,875,343	\$10,242,801	\$10,242,801	\$10,039,731	\$10,039,731	\$0	\$0	\$0	\$0
Money Market Accounts/Repos (A)	\$0	\$1,271,290	\$1,271,290	\$313,739	\$313,739	\$0	\$0	\$0	\$0
Certificates of Deposit	\$18,600	\$18,600	\$18,600	\$18,600	\$18,600	\$0	\$0	\$0	\$0
Agency Securities (B)	\$2,373,165	\$2,509,075	\$2,329,905	\$2,509,075	\$2,371,310	\$0	\$0	\$0	\$0
Mortgaged Backed Securities	\$2,549,768	\$2,189,501	\$2,094,644	\$2,187,987	\$2,142,934	\$0	\$0	\$0	\$0
Equity Securities (C)	\$10,779,017	\$5,275,089	\$10,351,048	\$5,474,705	\$9,238,034	\$0	\$0	\$0	\$0
Mutual Funds	\$49,822,343	\$49,753,022	\$53,817,065	\$51,266,120	\$52,773,225	\$0	\$0	\$0	\$0
Municipal Bonds (E)	3,101,638	3,184,432	\$3,047,390	\$3,184,432	\$3,098,234	\$0	\$0	\$0	\$0
Corporate Bonds (D)	9,047,724	\$9,807,163	\$9,518,521	\$10,798,164	\$10,530,678	\$0	\$0	\$0	\$0
Total	\$88,567,598	\$84,250,973	\$92,691,264	\$85,792,553	\$90,526,485	\$0	\$0	\$0	\$0
Other Funds									
Cash/Sweeps	\$3,028,809	\$3,348,755	\$3,348,755	\$3,737,567	\$3,737,567	\$0	\$0	\$0	\$0
Money Market Accounts/Repos (A)	\$32,231,117	\$10,448,038	\$10,448,038	\$18,643,201	\$18,643,201	\$0	\$0	\$0	\$0
Agency Securities (B)	\$730,811	\$732,417	\$725,332	\$732,417	\$734,698	\$0	\$0	\$0	\$0
Equity Securities (C)	\$410,341	\$0	\$421,699	\$0	\$338,222	\$0	\$0	\$0	\$0
US Gov Related Securities	\$0	\$0	\$0	\$0	\$0	\$0	\$0	\$0	\$0
Total	\$36,401,078	\$14,529,210	\$14,943,824	\$23,113,185	\$23,453,688	\$0	\$0	\$0	\$0
Grand Total	\$836,688,097	\$898,177,738	\$882,654,319	\$945,850,877	\$929,960,342	\$0	\$0	\$0	\$0
Deposits in Financial Institutions									
Total Cash/Sweeps/MMA/Repos	\$374,981,489	\$367,751,418	\$367,751,418	\$354,111,696	\$354,111,696	\$2	\$0	\$0	\$0
Total Certificates of Deposit	\$118,839	\$118,839	\$118,839	\$118,935	\$118,935	\$0	\$0	\$0	\$0
US Gov Related Securities	\$0	\$0	\$0	\$0	\$0	\$0	\$0	\$0	\$0
Total Deposits	\$375,100,328	\$367,870,257	\$367,870,257	\$354,230,631	\$354,230,631	\$2	\$0	\$0	\$0
Other Investments									
Treasury Notes	\$6,431,371	\$6,457,022	\$6,411,798	\$21,788,628	\$22,050,453	\$0	\$0	\$0	\$0
CMO's	\$12,194	\$1,191	\$1,178	\$0	\$0	\$0	\$0	\$0	\$0
Agency Securities (B)	\$114,302,686	\$119,694,374	\$112,997,363	\$122,650,088	\$118,118,868	\$0	\$0	\$0	\$0
Mortgaged Backed Securities	\$27,433,470	\$25,681,368	\$24,565,811	\$32,260,514	\$31,634,228	\$0	\$0	\$0	\$0
Equity Securities (C)	\$11,256,110	\$5,275,089	\$10,844,275	\$5,474,705	\$9,639,119	\$0	\$0	\$0	\$0
Bond Mutual Funds	\$43,624,820	\$46,697,531	\$42,755,183	\$46,697,531	\$42,326,162	\$0	\$0	\$0	\$0
Mutual Funds	\$49,822,343	\$49,753,022	\$53,817,065	\$140,122,497	\$136,762,167	\$0	\$0	\$0	\$0
Municipal Bonds (E)	\$89,878,975	\$93,016,663	\$86,944,715	\$92,040,809	\$87,087,176	\$0	\$0	\$0	\$0
Corporate Bonds (D)	\$118,825,800	\$183,731,221	\$176,446,674	\$219,441,851	\$212,100,480	\$0	\$0	\$0	\$0
Total Other	\$461,587,769	\$530,307,481	\$514,784,062	\$680,476,623	\$659,718,653	\$0	\$0	\$0	\$0
Grand Total	\$836,688,097	\$898,177,738	\$882,654,319	\$1,034,707,254	\$1,013,949,284	\$2	\$0	\$0	\$0
LSU Paid Campuses									
Current Funds									
Cash/Sweeps	\$181,674,912	\$203,182,436	\$203,182,436	\$143,406,677	\$143,406,677				
Money Market Accounts/Repos (A)		\$1,086,482	\$1,086,482	\$1,199,033	\$1,199,033				
Certificates of Deposit	\$100,239	\$100,239	\$100,239	\$100,335	\$100,335				
Treasury Notes	\$5,946,560	\$5,981,106	\$5,936,380	\$5,981,106	\$5,992,880				
CMO's	\$12,194	\$1,191	\$1,178	\$0	\$0				
Agency Securities (B)	\$106,431,935	\$111,597,769	\$105,185,500	\$114,553,969	\$110,223,622				
Mortgaged Backed Securities	\$24,739,884	\$23,399,388	\$22,382,418	\$29,980,855	\$29,402,259				
Equity Securities (C)	\$66,752	\$0	\$71,528	\$0	\$62,863				
Bond Mutual Funds	\$43,624,820	\$46,697,531	\$42,755,183	\$46,697,531	\$42,326,162				
Municipal Bonds (E)	\$69,850,308	\$74,813,338	\$69,103,860	\$74,813,338	\$70,083,243				
Corporate Bonds (D)	\$109,778,076	\$171,411,630	\$164,444,383	\$191,498,075	\$184,365,617				
US Gov Related Securities									
Total	\$542,225,680	\$638,271,110	\$614,249,587	\$608,230,919	\$587,162,691	\$0	\$0	\$0	\$0
Endowment Funds									
Money Market Accounts/Repos (A)		\$1,271,290	\$1,271,290	\$313,739	\$313,739				
Certificates of Deposit	\$18,600	\$18,600	\$18,600	\$18,600	\$18,600				
Agency Securities (B)	\$2,373,165	\$2,509,075	\$2,329,905	\$2,509,075	\$2,371,310				
Mortgaged Backed Securities	\$2,549,768	\$2,189,501	\$2,094,644	\$2,187,987	\$2,142,934				
Equity Securities (C)	\$10,764,405	\$5,267,439	\$10,336,092	\$5,467,055	\$9,222,264				
Municipal Bonds	\$3,101,638	\$3,184,432	\$3,047,390	\$3,184,432	\$3,098,234				
Corporate Bonds (D)	\$9,047,724	\$9,807,163	\$9,518,521	\$10,798,164	\$10,530,678				
US Gov Related Securities									
Total	\$27,855,300	\$24,247,500	\$28,616,442	\$24,479,052	\$27,697,759	\$0	\$0	\$0	\$0
Other Funds									
Cash/Sweeps									
Money Market Accounts/Repos (A)	\$23,626,037	\$1,805,015	\$1,805,015	\$9,956,205	\$9,956,205				
Agency Securities (B)	\$730,811	\$732,417	\$725,332	\$732,417	\$734,698				
Total	\$24,356,848	\$2,537,432	\$2,530,347	\$10,688,622	\$10,690,903	\$0	\$0	\$0	\$0
Grand Total	\$594,437,828	\$665,056,042	\$645,396,376	\$643,398,593	\$625,551,353	\$0	\$0	\$0	\$0

LSU
Investment Summary
For the Quarter Ended December 31, 2018

Fund Description	As of 7/1/2018	As of 9/30/2018		As of 12/31/2018		As of 3/31/2019		As of 06/30/2019	
	Value	Cost	Market Value	Cost	Market Value	Cost	Market Value	Cost	Market Value
LSU Health Shreveport									
Current Funds									
Cash/Sweeps S.	\$71,661,018	\$70,084,920	\$70,084,920	\$75,562,440	\$75,562,440				
Cash/Sweeps	\$71,661,018	\$70,084,920	\$70,084,920	\$75,562,440	\$75,562,440	\$0	\$0	\$0	\$0
Money Market Accounts/Repos (A)	\$28,531	\$0	\$0	\$0	\$0				
Treasury Notes (B)	\$484,811	\$475,916	\$475,418	\$15,807,522	\$16,057,573				
Agency Securities (B)	\$4,766,775	\$4,855,113	\$4,756,626	\$4,854,627	\$4,789,238				
Mortgaged Backed Securities (B)	\$143,818	\$92,479	\$88,749	\$91,672	\$89,035				
Municipal Bonds (E)	\$16,927,029	\$15,018,893	\$14,793,465	\$14,043,039	\$13,905,699				
Corporate Bonds (D)	\$0	\$2,512,428	\$2,483,770	\$17,145,612	\$17,204,185				
Total	\$94,011,982	\$93,039,749	\$92,682,948	\$127,504,912	\$127,608,170	\$0	\$0	\$0	\$0
Endowment Funds									
Cash/Sweeps	\$10,875,343	\$10,242,801	\$10,242,801	\$10,039,731	\$10,039,731				
Equity Securities (C)	\$14,612	\$7,650	\$14,956	\$7,650	\$15,770				
Mutual Funds	\$49,822,343	\$46,568,590	\$50,769,675	\$48,081,688	\$49,674,991				
Total	\$60,712,298	\$56,819,041	\$61,027,432	\$58,129,069	\$59,730,492	\$0	\$0	\$0	\$0
Grand Total	\$154,724,280	\$149,858,790	\$153,710,380	\$185,633,981	\$187,338,662	\$0	\$0	\$0	\$0
LSU HCSD									
Current Funds									
Cash/Sweeps	\$75,481,759	\$68,086,696	\$68,086,696	\$101,209,308	\$101,209,308				
Total	\$75,481,759	\$68,086,696	\$68,086,696	\$101,209,308	\$101,209,308	\$0	\$0	\$0	\$0
Other Funds									
Cash/Sweeps	\$3,028,809	\$3,348,755	\$3,348,755	\$3,737,567	\$3,737,567				
Money Market Accounts/Repos (A)	\$8,605,080	\$8,643,023	\$8,643,023	\$8,686,996	\$8,686,996				
Equity Securities (C)	\$410,341		\$421,699		\$338,222				
US Gov Related Securities									
Total	\$12,044,230	\$11,991,778	\$12,413,477	\$12,424,563	\$12,762,785	\$0	\$0	\$0	\$0
Grand Total	\$87,525,989	\$80,078,474	\$80,500,173	\$113,633,871	\$113,972,093	\$0	\$0	\$0	\$0
System Total	\$836,688,097	\$894,993,306	\$879,606,929	\$942,666,445	\$926,862,108	\$0	\$0	\$0	\$0

* Negative balance in the cash/Sweeps section of the current funds does not represent an actual negative bank balance, rather it represents a timing difference of the allocation of the current funds.

** Small endowment funds at LSUS were moved to the LSUS Foundation to accommodate Workday.

*** LSU Paid Campuses include the following: LSU, LSU Ag Center, LSUA, LSUE, LSUS, LSU Health New Orleans, and the LSU Pennington Biomedical Research Center.

BENCHMARK NOTES (Example Only)

(A) Benchmarked against 90 day T-Bill

(B) Benchmarked against Barclay's US Agg Bond TR USD

(C) US equities benchmarked against Russell 3000 and international against MSCI emerging markets

(D) Benchmarked against XYZ

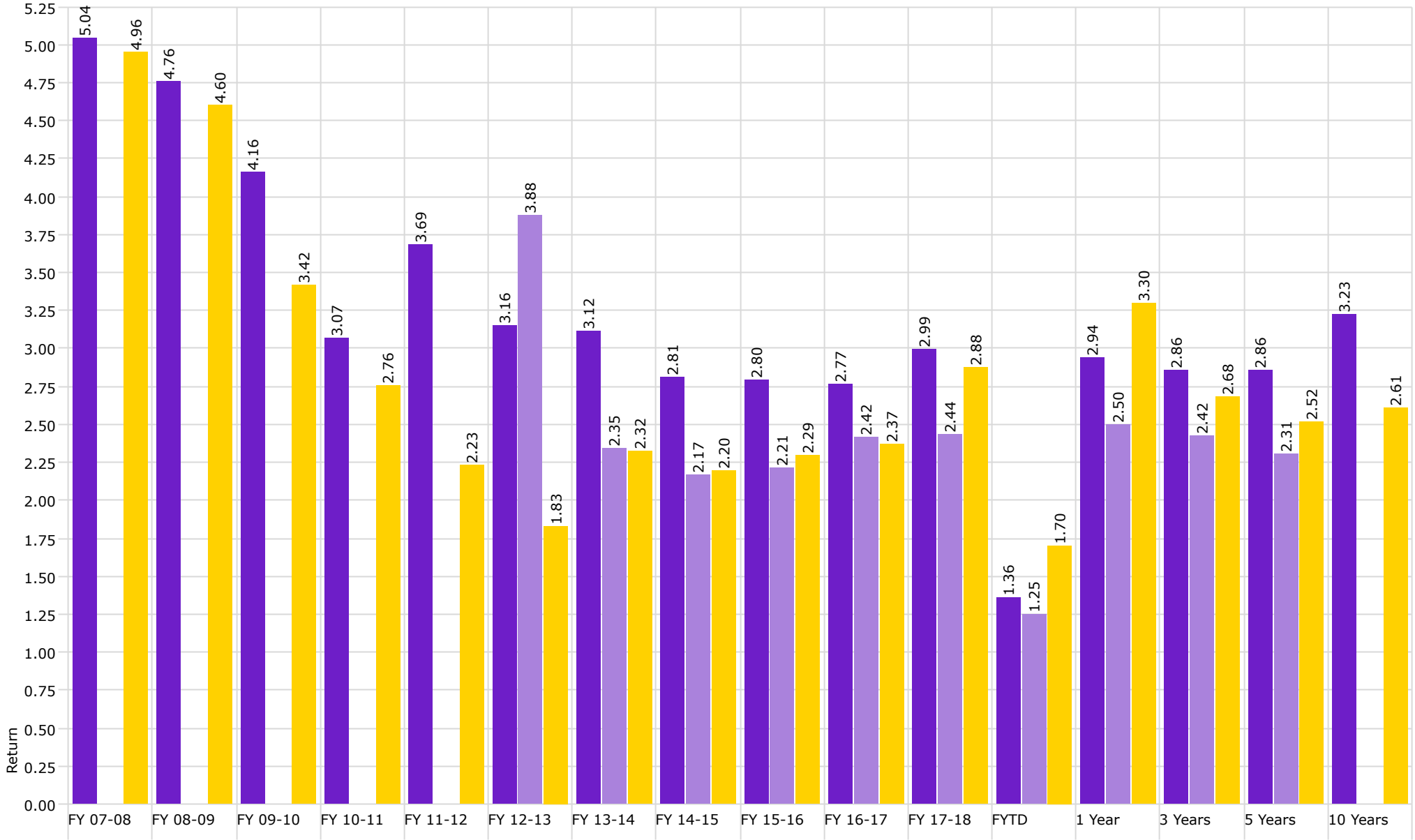
(E) Benchmarked against XYZ

Disclaimer: Pursuant to PM-9, corporate bonds/notes only available for investment beginning 7-1-2011. Louisiana law provides for restrictions on maturity and allocation and may effect benchmark comparisons.



Investment Management Program Non Endowed Accounts **Realized Yield**

As of 12/31/2018



■ Non Endowed

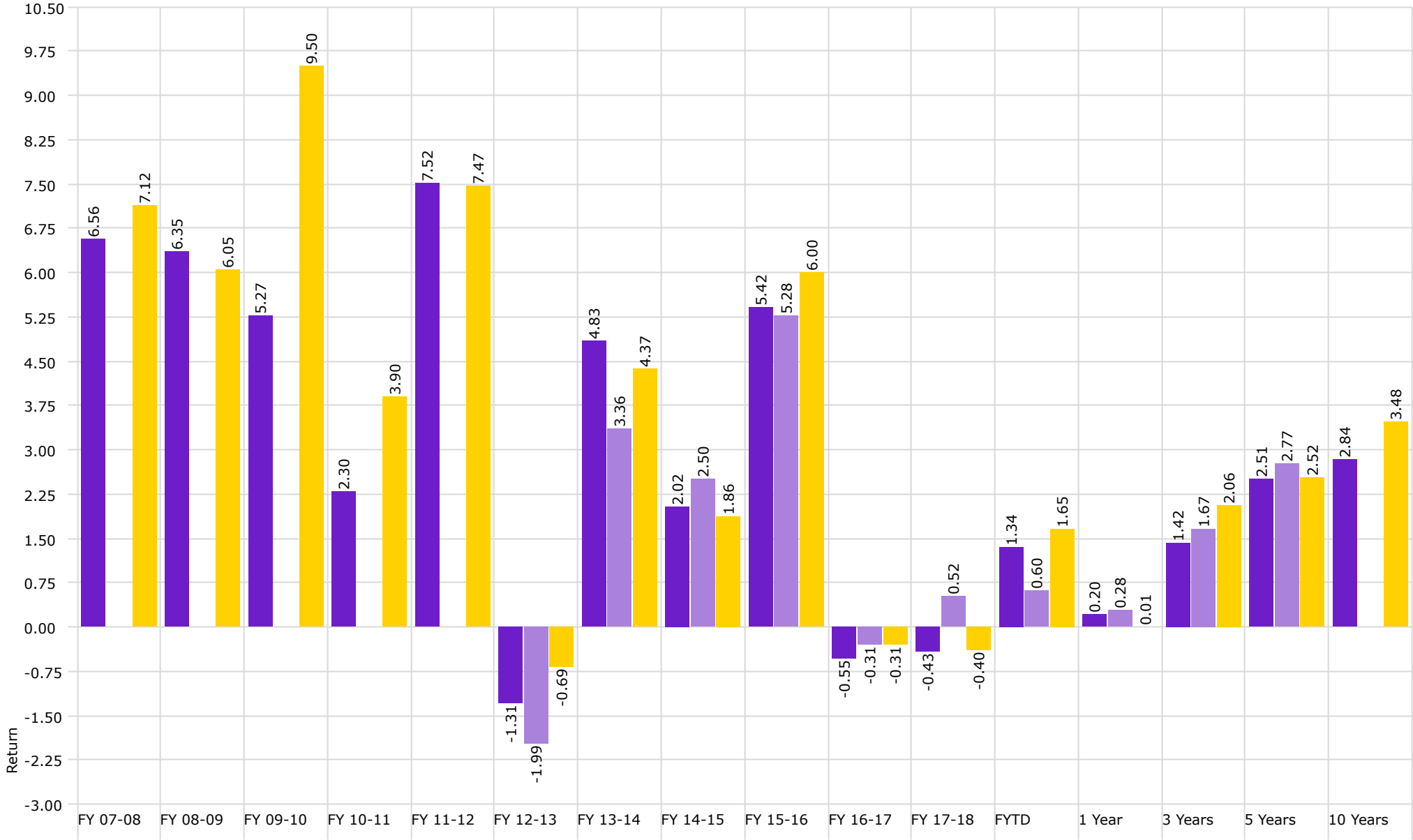
■ Health Plan

■ Barclays Aggregate Bond Index



Investment Management Program Non Endowed Accounts **Total Return**

As of 12/31/2018



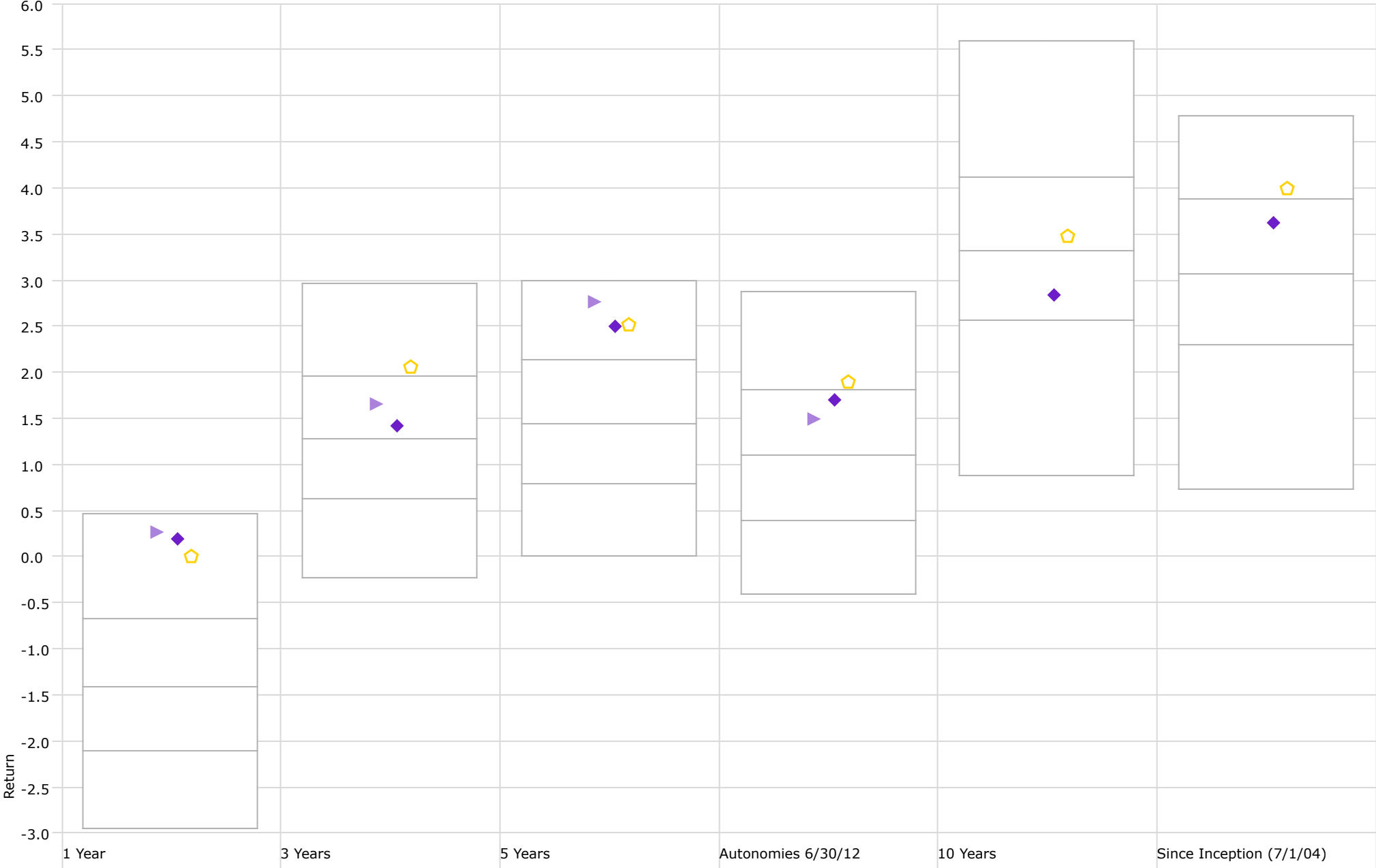
■ Non Endowed

■ Health Plan

■ Barclays Aggregate Bond Index

Performance Relative to Peer Group (Total Return)

Peer Group (5-95%): All Managed Investments - U.S. - Intermediate-Term Bond



◆ Non Endowed

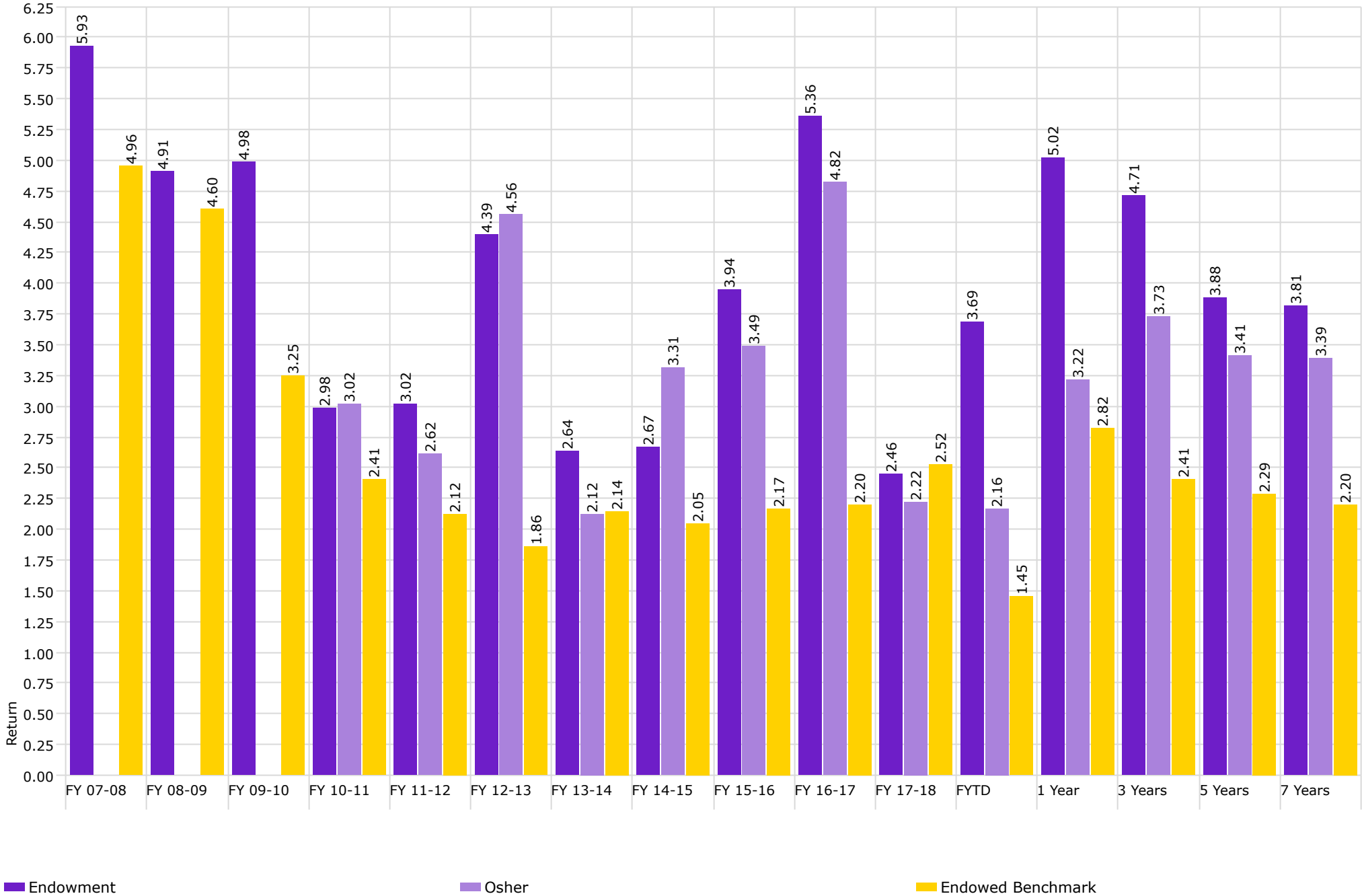
▶ Health Plan

⬠ Barclays Aggregate Bond Index



Investment Management Program Endowed Accounts **Realized Yield**

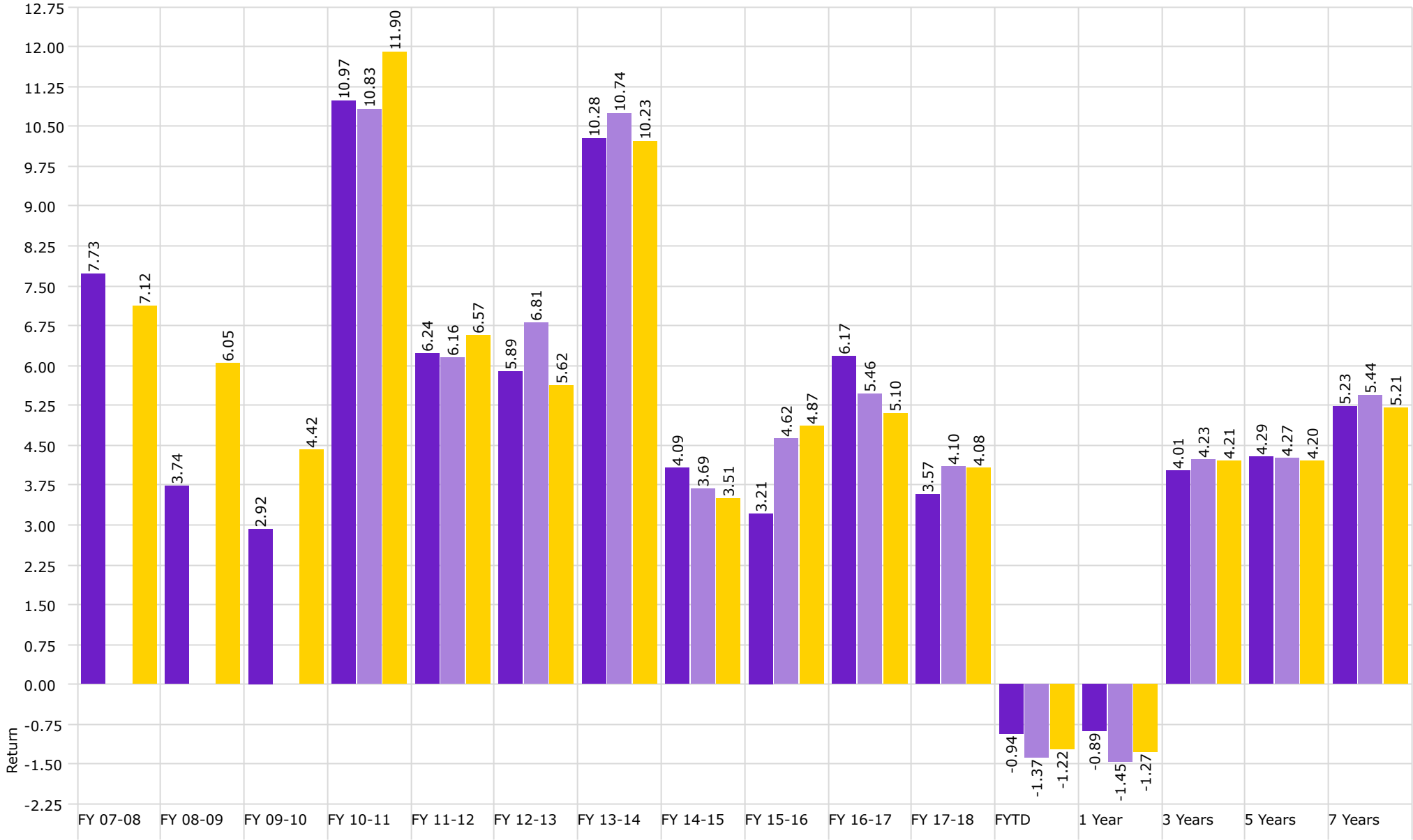
As of 12/31/2018





Investment Management Program Endowed Accounts **Total Return**

As of 12/31/2018



■ Endowment

■ Osher

■ Endowed Benchmark