

LSU
Deposit and Collateral Report
For the Quarter Ended March 31, 2019

Deposits Requiring Posting of Collateral:	Demand Deposit Sweep/MMA Repurchase	Certificates of Deposit	Total Deposits in Financial Institutions	Collateral (1)
LSU A&M, LSU Alexandria, LSU Eunice, LSU Shreveport, and LSU Health New Orleans				
Chase - LSU, Health Plan Premium	\$ 108,454,914		\$ 108,454,914	\$ 136,254,648
Cottonport Bank-LSU Ag Center	578,910		578,910	1,200,002
Capital One - LSU-A	4,755,721		4,755,721	4,755,721
St. Landry Bank - LSU-E	420,078		420,078	1,250,035
Campus Federal Credit Union - LSU-S		\$ 100,335	100,335	250,000
Capital One (Hibernia National Bank) - LSU-S	21,140,395		21,140,395	21,217,242
Chase-HSCNO	42,006,448	18,600	42,025,048	60,018,479
Total	\$ 177,356,466	\$ 118,935	\$ 177,475,401	\$ 224,946,127
LSU Health Shreveport				
JPMC-Shreveport	\$ 71,227,061		\$ 71,227,061	\$ 93,189,099
JPMC-Shreveport Endowment Fds	9,648,787		9,648,787	-
Total	\$ 80,875,848	\$ -	\$ 80,875,848	\$ 93,189,099
LSU Health Care Services Division				
JP Morgan Chase (HCSD)	\$ 94,470,581		\$ 94,470,581	\$ 89,850,000
Capital One (MCLNO Trust Fund)	3,905,061		3,905,061	3,978,565
Total	\$ 98,375,642	\$ -	\$ 98,375,642	\$ 93,828,565
Total Requiring Collateral	\$ 356,607,956	\$ 118,935	\$ 356,726,891	\$ 411,963,791
Deposits In Trust or Federal Obligations Not Requiring Collateral				
Federated Money Markets	\$ 11,205,043		\$ 11,205,043	
Federated Funds-Treas. Oblig. (2)				-
Total	\$ 11,205,043	\$ -	\$ 11,205,043	
Total Deposits	\$ 367,812,999	\$ 118,935	\$ 367,931,934	

- (1) Collateral amounts include FDIC coverage of \$250,000 on Demand Deposits, \$250,000 on CD's and \$250,000 by the National Credit Union Share Insurance Fund on deposits with Campus Federal Credit Union.
- (2) One Group & Federated Funds are no-load, open ended mutual funds investing in U.S. Treasury obligations.

LSU
Investment Summary
For the Quarter Ended March 31, 2019

Fund Description	As of 7/1/2018		As of 9/30/2018		As of 12/31/2018		As of 3/31/2019		As of 06/30/2019	
	Value	Cost	Market Value	Cost	Market Value	Cost	Market Value	Cost	Market Value	
Current Funds										
Cash/Sweeps	\$328,817,689	\$341,354,052	\$341,354,052	\$320,178,425	\$320,178,425	\$343,054,109	\$343,054,109	\$0	\$0	
Money Market Accounts/Repos (A)	\$28,531	\$1,086,482	\$1,086,482	\$1,199,033	\$1,199,033	\$945,755	\$945,755	\$0	\$0	
Certificates of Deposit	\$100,239	\$100,239	\$100,239	\$100,335	\$100,335	\$100,335	\$100,335	\$0	\$0	
Treasury Notes	\$6,431,371	\$6,457,022	\$6,411,798	\$21,788,628	\$22,050,453	\$24,395,615	\$22,872,851	\$0	\$0	
CMO's	\$12,194	\$1,191	\$1,178	\$0	\$0	\$0	\$0	\$0	\$0	
Agency Securities (B)	\$111,198,710	\$116,452,882	\$109,942,126	\$119,408,596	\$115,012,860	\$123,356,364	\$121,000,028	\$0	\$0	
Mortgaged Backed Securities	\$24,883,702	\$23,491,867	\$22,471,167	\$30,072,527	\$29,491,294	\$28,825,660	\$28,490,104	\$0	\$0	
Equity Securities (C)	\$66,752	\$0	\$71,528	\$0	\$62,863	\$0	\$65,175	\$0	\$0	
Bond Mutual Funds	\$43,624,820	\$46,697,531	\$42,755,183	\$46,697,531	\$42,326,162	\$46,697,531	\$43,702,120	\$0	\$0	
Municipal Bonds (E)	\$86,777,337	\$89,832,231	\$83,897,325	\$88,856,377	\$83,988,942	\$89,450,258	\$87,284,966	\$0	\$0	
Corporate Bonds (D)	\$109,778,076	\$173,924,058	\$166,928,153	\$208,643,687	\$201,569,802	\$219,718,407	\$217,458,846	\$0	\$0	
Total	\$711,719,421	\$799,397,555	\$775,019,231	\$836,945,139	\$815,980,169	\$876,544,034	\$864,974,289	\$0	\$0	
Endowment Funds										
Cash/Sweeps	\$10,875,343	\$10,242,801	\$10,242,801	\$10,039,731	\$10,039,731	\$9,648,786	\$9,648,786	\$0	\$0	
Money Market Accounts/Repos (A)	\$0	\$1,271,290	\$1,271,290	\$313,739	\$313,739	\$91,023	\$91,023	\$0	\$0	
Certificates of Deposit	\$18,600	\$18,600	\$18,600	\$18,600	\$18,600	\$18,600	\$18,600	\$0	\$0	
Agency Securities (B)	\$2,373,165	\$2,509,075	\$2,329,905	\$2,509,075	\$2,371,310	\$2,509,075	\$2,415,955	\$0	\$0	
Mortgaged Backed Securities	\$2,549,768	\$2,189,501	\$2,094,644	\$2,187,987	\$2,142,934	\$2,030,618	\$2,013,312	\$0	\$0	
Equity Securities (C)	\$10,779,017	\$5,275,089	\$10,351,048	\$5,474,705	\$9,238,034	\$5,793,339	\$10,664,716	\$0	\$0	
Mutual Funds	\$49,822,343	\$46,568,590	\$50,769,675	\$48,081,688	\$49,674,991	\$48,821,246	\$53,193,512	\$0	\$0	
Municipal Bonds (E)	\$3,101,638	\$3,184,432	\$3,047,390	\$3,184,432	\$3,098,234	\$3,169,310	\$3,135,319	\$0	\$0	
Corporate Bonds (D)	\$9,047,724	\$9,807,163	\$9,518,521	\$10,798,164	\$10,530,678	\$9,528,664	\$9,509,264	\$0	\$0	
Total	\$88,567,598	\$81,066,541	\$89,643,874	\$82,608,121	\$87,428,251	\$81,610,661	\$90,690,487	\$0	\$0	
Other Funds										
Cash/Sweeps	\$3,028,809	\$3,348,755	\$3,348,755	\$3,737,567	\$3,737,567	\$3,905,061	\$3,905,061	\$0	\$0	
Money Market Accounts/Repos (A)	\$32,231,117	\$10,448,038	\$10,448,038	\$18,643,201	\$18,643,201	\$10,168,265	\$10,168,265	\$0	\$0	
Agency Securities (B)	\$730,811	\$732,417	\$725,332	\$732,417	\$734,698	\$732,417	\$740,248	\$0	\$0	
Equity Securities (C)	\$410,341	\$0	\$421,699	\$0	\$338,222	\$0	\$400,768	\$0	\$0	
Total	\$36,401,078	\$14,529,210	\$14,943,824	\$23,113,185	\$23,453,688	\$14,805,743	\$15,214,342	\$0	\$0	
Grand Total	\$836,688,097	\$894,993,306	\$879,606,929	\$942,666,445	\$926,862,108	\$972,960,438	\$970,879,118	\$0	\$0	
Deposits in Financial Institutions										
Total Cash/Sweeps/MMA/Repos	\$374,981,489	\$367,751,418	\$367,751,418	\$354,111,696	\$354,111,696	\$367,812,999	\$367,812,999	\$0	\$0	
Total Certificates of Deposit	\$118,839	\$118,839	\$118,839	\$118,935	\$118,935	\$118,935	\$118,935	\$0	\$0	
Total Deposits	\$375,100,328	\$367,870,257	\$367,870,257	\$354,230,631	\$354,230,631	\$367,931,934	\$367,931,934	\$0	\$0	
Other Investments										
Treasury Notes	\$6,431,371	\$6,457,022	\$6,411,798	\$21,788,628	\$22,050,453	\$24,395,615	\$22,872,851	\$0	\$0	
CMO's	\$12,194	\$1,191	\$1,178	\$0	\$0	\$0	\$0	\$0	\$0	
Agency Securities (B)	\$114,302,686	\$119,694,374	\$112,997,363	\$122,650,088	\$118,118,868	\$126,597,856	\$124,156,231	\$0	\$0	
Mortgaged Backed Securities	\$27,433,470	\$25,681,368	\$24,565,811	\$32,260,514	\$31,634,228	\$30,856,278	\$30,503,416	\$0	\$0	
Equity Securities (C)	\$11,256,110	\$5,275,089	\$10,844,275	\$5,474,705	\$9,639,119	\$5,793,339	\$11,130,659	\$0	\$0	
Bond Mutual Funds	\$43,624,820	\$46,697,531	\$42,755,183	\$46,697,531	\$42,326,162	\$46,697,531	\$43,702,120	\$0	\$0	
Mutual Funds	\$49,822,343	\$46,568,590	\$50,769,675	\$136,938,065	\$133,663,933	\$48,821,246	\$53,193,512	\$0	\$0	
Municipal Bonds (E)	\$89,878,975	\$93,016,663	\$86,944,715	\$92,040,809	\$87,087,176	\$92,619,568	\$90,420,285	\$0	\$0	
Corporate Bonds (D)	\$118,825,800	\$183,731,221	\$176,446,674	\$219,441,851	\$212,100,480	\$229,247,071	\$226,968,110	\$0	\$0	
Total Other	\$461,587,769	\$527,123,049	\$511,736,672	\$677,292,191	\$656,620,419	\$605,028,504	\$602,947,184	\$0	\$0	
Grand Total	\$836,688,097	\$894,993,306	\$879,606,929	\$1,031,522,822	\$1,010,851,050	\$972,960,438	\$970,879,118	\$0	\$0	
LSU Paid Campuses										
Current Funds										
Cash/Sweeps	\$181,674,912	\$203,182,436	\$203,182,436	\$143,406,677	\$143,406,677	\$177,356,466	\$177,356,466	\$0	\$0	
Money Market Accounts/Repos (A)		\$1,086,482	\$1,086,482	\$1,199,033	\$1,199,033	\$945,755	\$945,755	\$0	\$0	
Certificates of Deposit	\$100,239	\$100,239	\$100,239	\$100,335	\$100,335	\$100,335	\$100,335	\$0	\$0	
Treasury Notes	\$5,946,560	\$5,981,106	\$5,936,380	\$5,981,106	\$5,992,880	\$2,010,874	\$2,022,960	\$0	\$0	
CMO's	\$12,194	\$1,191	\$1,178	\$0	\$0	\$0	\$0	\$0	\$0	
Agency Securities (B)	\$106,431,935	\$111,597,769	\$105,185,500	\$114,553,969	\$110,223,622	\$114,502,219	\$112,185,223	\$0	\$0	
Mortgaged Backed Securities	\$24,739,884	\$23,399,388	\$22,382,418	\$29,980,855	\$29,402,259	\$28,757,743	\$28,424,240	\$0	\$0	
Equity Securities (C)	\$66,752	\$0	\$71,528	\$0	\$62,863	\$0	\$65,175	\$0	\$0	
Bond Mutual Funds	\$43,624,820	\$46,697,531	\$42,755,183	\$46,697,531	\$42,326,162	\$46,697,531	\$43,702,120	\$0	\$0	
Municipal Bonds (E)	\$69,850,308	\$74,813,338	\$69,103,860	\$74,813,338	\$70,083,243	\$76,907,058	\$72,919,232	\$0	\$0	
Corporate Bonds (D)	\$109,778,076	\$171,411,630	\$164,444,383	\$191,498,075	\$184,365,617	\$196,513,340	\$193,862,806	\$0	\$0	
Total	\$542,225,680	\$638,271,110	\$614,249,587	\$608,230,919	\$587,162,691	\$643,791,321	\$631,584,312	\$0	\$0	
Endowment Funds										
Money Market Accounts/Repos (A)		\$1,271,290	\$1,271,290	\$313,739	\$313,739	\$91,023	\$91,023	\$0	\$0	
Certificates of Deposit	\$18,600	\$18,600	\$18,600	\$18,600	\$18,600	\$18,600	\$18,600	\$0	\$0	
Agency Securities (B)	\$2,373,165	\$2,509,075	\$2,329,905	\$2,509,075	\$2,371,310	\$2,509,075	\$2,415,955	\$0	\$0	
Mortgaged Backed Securities	\$2,549,768	\$2,189,501	\$2,094,644	\$2,187,987	\$2,142,934	\$2,030,618	\$2,013,312	\$0	\$0	
Equity Securities (C)	\$10,764,405	\$5,267,439	\$10,336,092	\$5,467,055	\$9,222,264	\$5,785,689	\$10,647,045	\$0	\$0	
Municipal Bonds	\$3,101,638	\$3,184,432	\$3,047,390	\$3,184,432	\$3,098,234	\$3,169,310	\$3,135,319	\$0	\$0	
Corporate Bonds (D)	\$9,047,724	\$9,807,163	\$9,518,521	\$10,798,164	\$10,530,678	\$9,528,664	\$9,509,264	\$0	\$0	
Total	\$27,855,300	\$24,247,500	\$28,616,442	\$24,479,052	\$27,697,759	\$23,132,979	\$27,830,518	\$0	\$0	
Other Funds										
Money Market Accounts/Repos (A)	\$23,626,037	\$1,805,015	\$1,805,015	\$9,956,205	\$9,956,205	\$1,449,454	\$1,449,454	\$0	\$0	
Agency Securities (B)	\$730,811	\$732,417	\$725,332	\$732,417	\$734,698	\$732,417	\$740,248	\$0	\$0	
Total	\$24,356,848	\$2,537,432	\$2,530,347	\$10,688,622	\$10,690,903	\$2,181,871	\$2,189,702	\$0	\$0	
Grand Total	\$594,437,828	\$665,056,042	\$645,396,376	\$643,398,593	\$625,551,353	\$669,106,171	\$661,604,532	\$0	\$0	

LSU
Investment Summary
For the Quarter Ended March 31, 2019

Fund Description	As of 7/1/2018	As of 9/30/2018		As of 12/31/2018		As of 3/31/2019		As of 06/30/2019	
	Value	Cost	Market Value	Cost	Market Value	Cost	Market Value	Cost	Market Value
LSU Health Shreveport									
Current Funds									
Cash/Sweeps S.	\$71,661,018	\$70,084,920	\$70,084,920	\$75,562,440	\$75,562,440	\$71,227,062	\$71,227,062		
Cash/Sweeps	\$71,661,018	\$70,084,920	\$70,084,920	\$75,562,440	\$75,562,440	\$71,227,062	\$71,227,062	\$0	\$0
Money Market Accounts/Repos (A)	\$28,531	\$0	\$0	\$0	\$0	\$0	\$0		
Treasury Notes (B)	\$484,811	\$475,916	\$475,418	\$15,807,522	\$16,057,573	\$22,384,741	\$20,849,891		
Agency Securities (B)	\$4,766,775	\$4,855,113	\$4,756,626	\$4,854,627	\$4,789,238	\$8,854,145	\$8,814,805		
Mortgaged Backed Securities (B)	\$143,818	\$92,479	\$88,749	\$91,672	\$89,035	\$67,917	\$65,864		
Municipal Bonds (E)	\$16,927,029	\$15,018,893	\$14,793,465	\$14,043,039	\$13,905,699	\$12,543,200	\$14,365,734		
Corporate Bonds (D)	\$0	\$2,512,428	\$2,483,770	\$17,145,612	\$17,204,185	\$23,205,067	\$23,596,040		
Total	\$94,011,982	\$93,039,749	\$92,682,948	\$127,504,912	\$127,608,170	\$138,282,132	\$138,919,396	\$0	\$0
Endowment Funds									
Cash/Sweeps	\$10,875,343	\$10,242,801	\$10,242,801	\$10,039,731	\$10,039,731	\$9,648,786	\$9,648,786		
Equity Securities (C)	\$14,612	\$7,650	\$14,956	\$7,650	\$15,770	\$7,650	\$17,671		
Mutual Funds	\$49,822,343	\$46,568,590	\$50,769,675	\$48,081,688	\$49,674,991	\$48,821,246	\$53,193,512		
Total	\$60,712,298	\$56,819,041	\$61,027,432	\$58,129,069	\$59,730,492	\$58,477,682	\$62,859,969	\$0	\$0
Grand Total	\$154,724,280	\$149,858,790	\$153,710,380	\$185,633,981	\$187,338,662	\$196,759,814	\$201,779,365	\$0	\$0
LSU HCSD									
Current Funds									
Cash/Sweeps	\$75,481,759	\$68,086,696	\$68,086,696	\$101,209,308	\$101,209,308	\$94,470,581	\$94,470,581		
Total	\$75,481,759	\$68,086,696	\$68,086,696	\$101,209,308	\$101,209,308	\$94,470,581	\$94,470,581	\$0	\$0
Other Funds									
Cash/Sweeps	\$3,028,809	\$3,348,755	\$3,348,755	\$3,737,567	\$3,737,567	\$3,905,061	\$3,905,061		
Money Market Accounts/Repos (A)	\$8,605,080	\$8,643,023	\$8,643,023	\$8,686,996	\$8,686,996	\$8,718,811	\$8,718,811		
Equity Securities (C)	\$410,341		\$421,699		\$338,222		\$400,768		
Total	\$12,044,230	\$11,991,778	\$12,413,477	\$12,424,563	\$12,762,785	\$12,623,872	\$13,024,640	\$0	\$0
Grand Total	\$87,525,989	\$80,078,474	\$80,500,173	\$113,633,871	\$113,972,093	\$107,094,453	\$107,495,221	\$0	\$0
System Total	\$836,688,097	\$894,993,306	\$879,606,929	\$942,666,445	\$926,862,108	\$972,960,438	\$970,879,118	\$0	\$0

* Negative balance in the cash/Sweeps section of the current funds does not represent an actual negative bank balance, rather it represents a timing difference of the allocation of the current funds.

** Small endowment funds at LSUS were moved to the LSUS Foundation to accommodate Workday.

*** LSU Paid Campuses include the following: LSU, LSU Ag Center, LSUA, LSUE, LSUS, LSU Health New Orleans, and the LSU Pennington Biomedical Research Center.

BENCHMARK NOTES (Example Only)

(A) Benchmarked against 90 day T-Bill

(B) Benchmarked against Barclay's US Agg Bond TR USD

(C) US equities benchmarked against Russell 3000 and international against MSCI emerging markets

(D) Benchmarked against XYZ

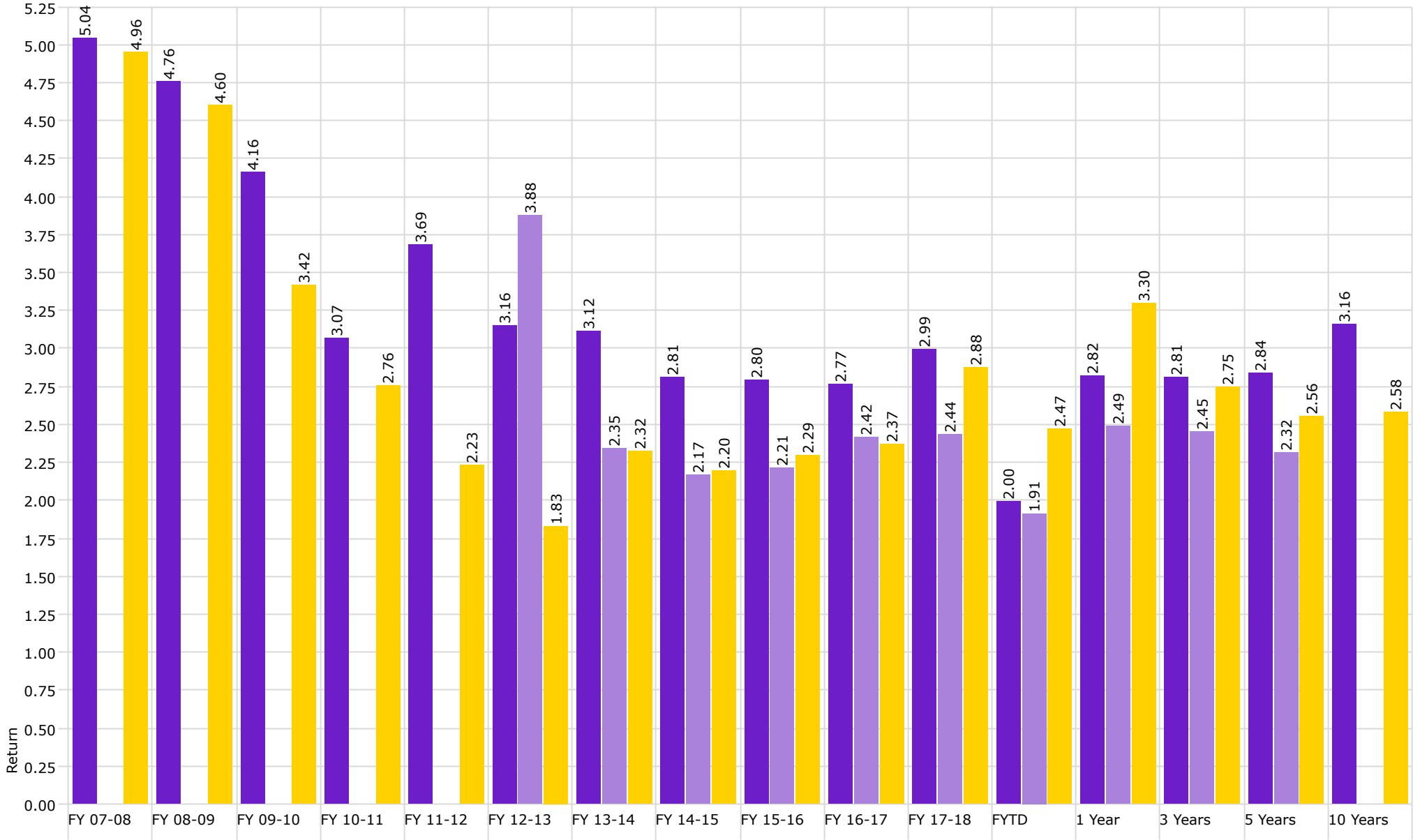
(E) Benchmarked against XYZ

Disclaimer: Pursuant to PM-9, corporate bonds/notes only available for investment beginning 7-1-2011. Louisiana law provides for restrictions on maturity and allocation and may effect benchmark comparisons.



Investment Management Program Non Endowed Accounts **Realized Yield**

As of 3/31/2019



■ Non Endowed

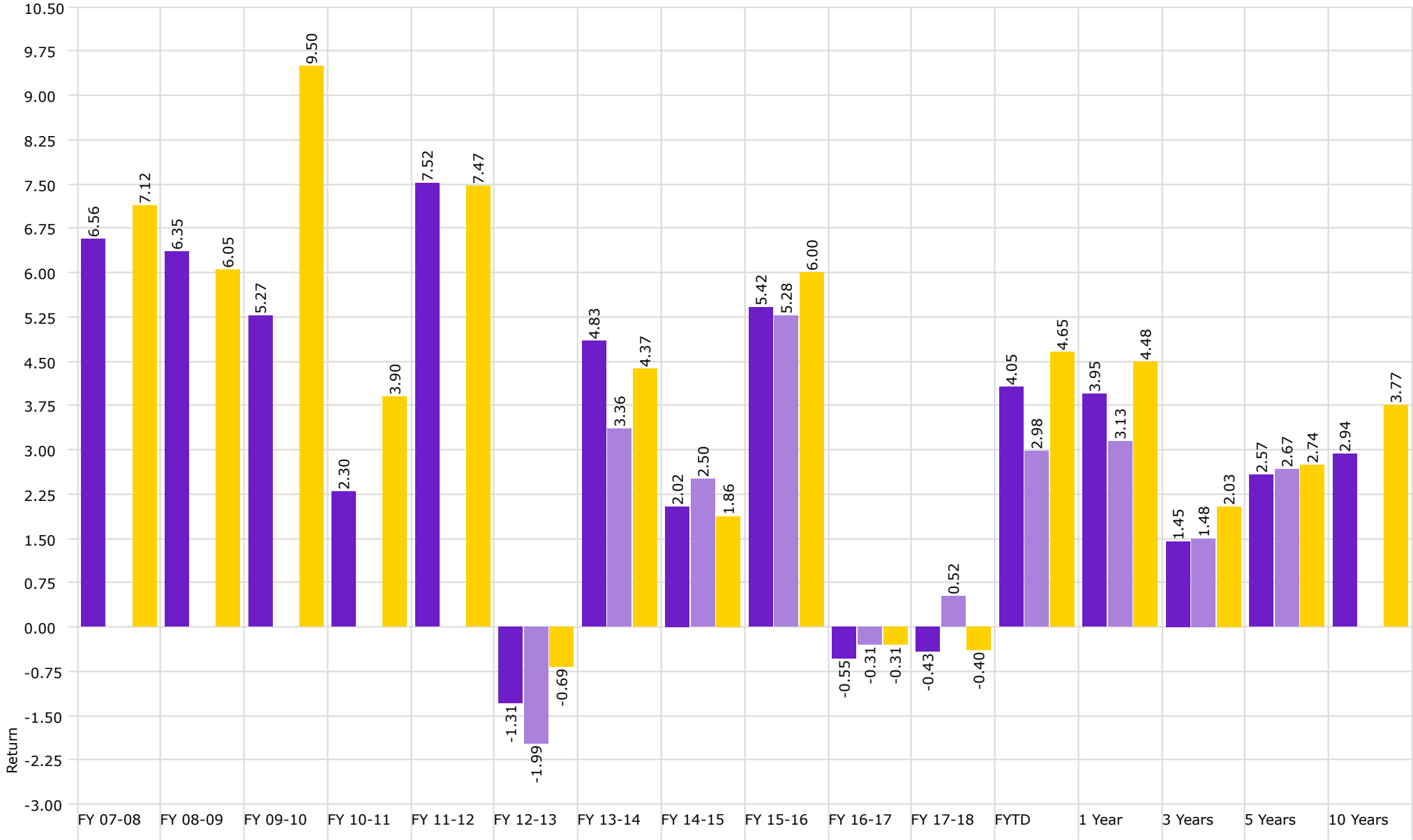
■ Health Plan

■ Barclays Aggregate Bond Index



Investment Management Program Non Endowed Accounts **Total Return**

As of 3/31/2019



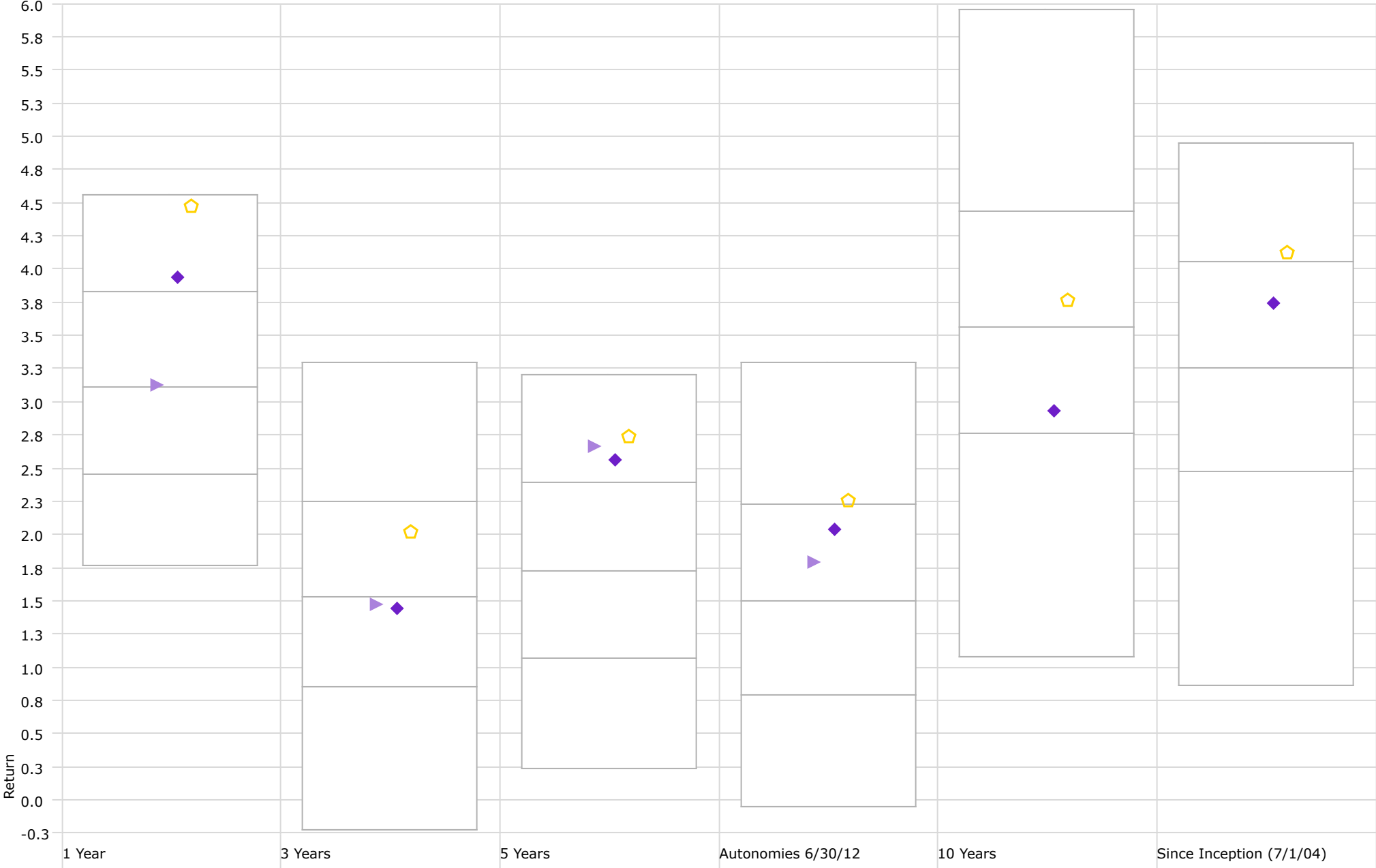
■ Non Endowed

■ Health Plan

■ Barclays Aggregate Bond Index

Performance Relative to Peer Group (Total Return)

Peer Group (5-95%): All Managed Investments - U.S. - Intermediate-Term Bond



◆ Non Endowed

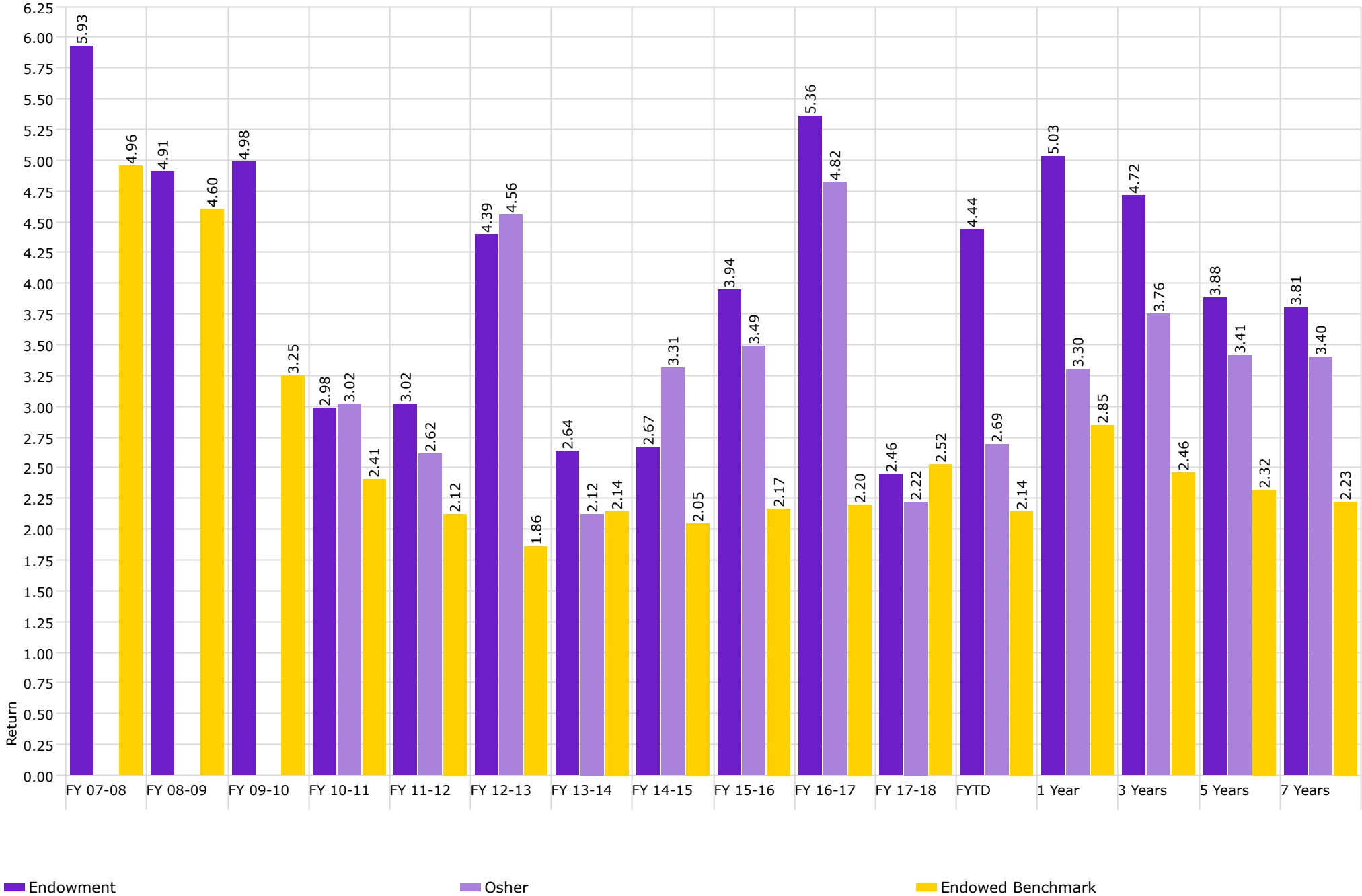
▶ Health Plan

⬠ Barclays Aggregate Bond Index



Investment Management Program Endowed Accounts **Realized Yield**

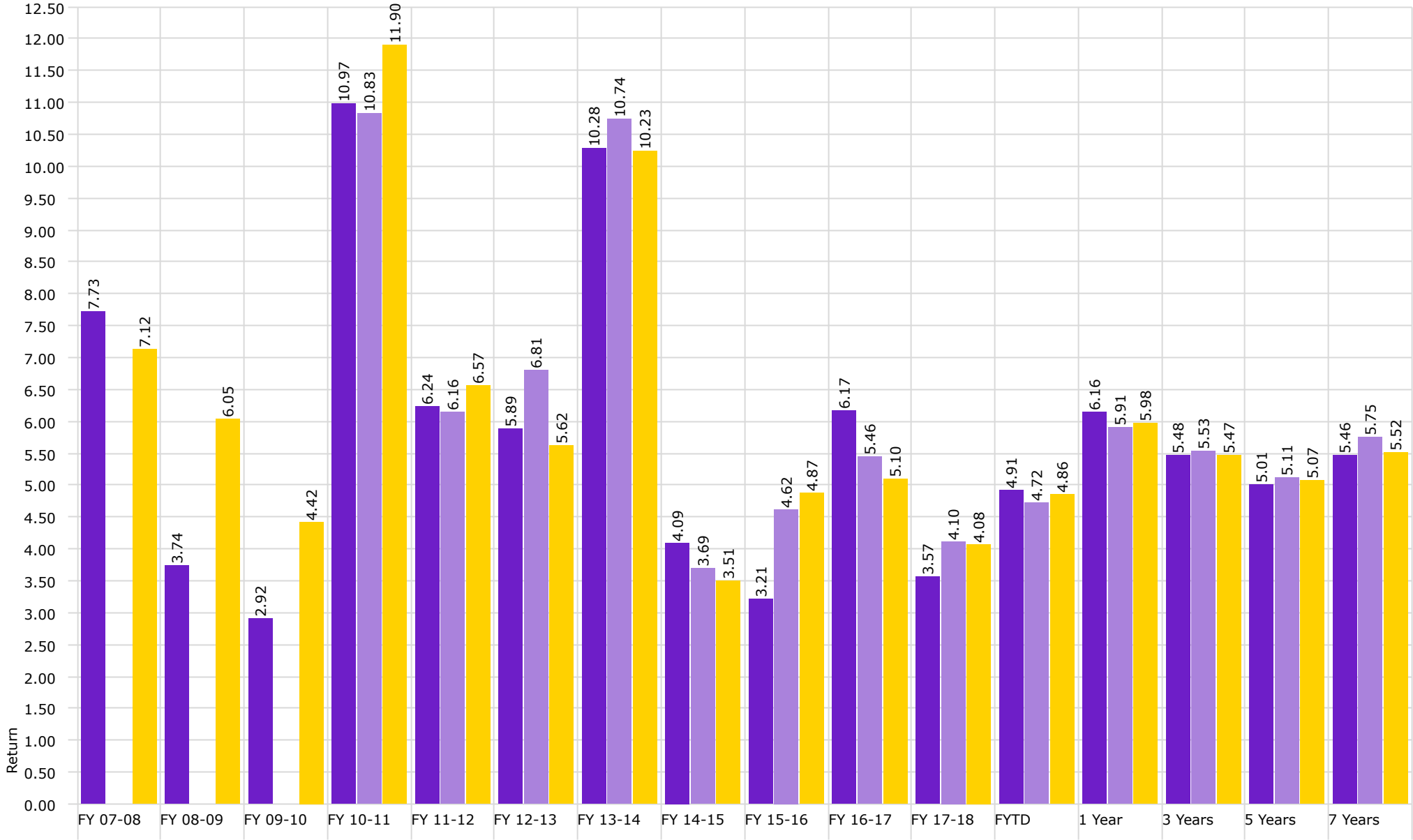
As of 3/31/2019





Investment Management Program Endowed Accounts **Total Return**

As of 3/31/2019



■ Endowment

■ Osher

■ Endowed Benchmark