

LSU
Deposit and Collateral Report
For the Quarter Ended December 31, 2014

Deposits Requiring Posting of Collateral:	Demand Deposit Sweep/MMA Repurchase	Certificates of Deposit	Total Deposits in Financial Institutions	Collateral (1)
LSU A&M, LSU Alexandria, LSU Eunice, and LSU Health New Orleans				
Chase - LSU, Health Plan Premium	\$ 46,891,428		\$ 46,891,428	\$ 74,251,455
Capital One CCD Program - LSU		\$ 8,000,000	8,000,000	18,182,126
Capital One - LSU-A	3,510,109		3,510,109	8,109,411
St. Landry Bank - LSU-E	681,547		681,547	500,658
Chase-HSCNO	20,266,864	18,600	20,285,464	28,106,712
Total	\$ 71,349,948	\$ 8,018,600	\$ 79,368,548	\$ 129,150,362
LSU Health Shreveport				
US Bank	\$ 8,097		\$ 8,097	\$ 250,000
Raymond James	1,577,498		1,577,498	-
Regions Bank-EA Conway	2,703,079		2,703,079	2,752,140
Regions Bank-Huey P Long	3,382,338		3,382,338	3,444,985
Regions Bank-Shreveport	\$ 64,653,980		\$ 64,653,980	\$ 70,627,431
Regions Bank-Shreveport Endowment Fds	2,599,323		2,599,323	-
Total	\$ 74,924,315	\$ -	\$ 74,924,315	\$ 77,074,556
LSU Health Care Services Division				
JP Morgan Chase & Capital One (WSTMC)	\$ 99,419,575		\$ 99,419,575	not required
J. P. Morgan Chase (MCLNO Trust Fund)	5,140,703		5,140,703	\$ 5,111,575
Capital One (MCLNO Trust Fund)	2,380,221		2,380,221	2,156,322
Total	\$ 106,940,499	\$ -	\$ 106,940,499	\$ 7,267,897
LSU - Shreveport (3)				
Campus Federal Credit Union		\$ 100,000	\$ 100,000	\$ 250,000
Capital One (Hibernia National Bank)	\$ 2,044,387		2,044,387	6,999,893
Total	\$ 2,044,387	\$ 100,000	\$ 2,144,387	\$ 7,249,893
Total Requiring Collateral	\$ 255,259,149	\$ 8,118,600	\$ 263,377,749	\$ 220,742,708
Deposits In Trust or Federal Obligations Not Requiring Collateral				
Federated Money Markets	\$ 82,744,528		\$ 82,744,528	
Federated Funds-Treas. Oblig. (2)	51,373		51,373	
Total	\$ 82,795,901	\$ -	\$ 82,795,901	
Total Deposits	\$ 338,055,050	\$ 8,118,600	\$ 346,173,650	

(1) Collateral amounts include FDIC coverage of \$250,000 on Demand Deposits, \$250,000 on CD's and \$250,000 by the National Credit Union Share Insurance Fund on deposits with Campus Federal Credit Union.

(2) One Group & Federated Funds are no-load, open ended mutual funds investing in U.S. Treasury obligations.

LSU
Investment Summary
For the Quarter Ended December 31, 2014

	As of 7/1/2014	As of 9/30/2014	As of 12/31/2014	As of 3/31/2015	As of 06/30/2015
Fund Description	Value	Cost	Market Value	Cost	Market Value
Current Funds					
Cash/Sweeps	\$255,081,416	\$238,148,609	\$238,148,609	\$244,809,732	\$244,809,732
Money Market Accounts/Repos (A)	\$275,903	\$795,078	\$795,078	\$6,961,703	\$6,961,703
Certificates of Deposit	\$12,100,000	\$8,100,000	\$8,100,000	\$8,100,000	\$8,100,000
Treasury Notes	\$8,941,625	\$10,939,114	\$10,917,430	\$5,969,063	\$6,021,880
CMO's	\$4,397,354	\$3,812,071	\$3,931,562	\$3,379,427	\$3,463,838
Agency Securities (B)	\$158,851,455	\$185,722,415	\$185,518,960	\$171,746,653	\$173,716,389
Mortgaged Backed Securities	\$24,290,792	\$25,402,855	\$25,715,176	\$26,907,513	\$27,387,527
Equity Securities (C)	\$63	\$0	\$82,308	\$0	\$82,875
Bond Mutual Funds	\$44,587,216	\$46,697,531	\$43,315,615	\$46,697,531	\$43,292,425
Municipal Bonds (E)	\$44,260,206	\$46,586,756	\$44,284,729	\$48,350,607	\$46,854,360
Corporate Bonds (D)	\$150,982,057	\$167,247,843	\$168,853,093	\$164,489,438	\$165,791,287
Total	\$703,768,087	\$733,452,272	\$729,662,560	\$727,411,667	\$726,482,016
Endowment Funds					
Cash/Sweeps	\$2,643,389	\$2,647,306	\$2,647,306	\$2,650,656	\$2,650,656
Money Market Accounts/Repos (A)	\$48,094	\$232,322	\$232,322	\$191,935	\$191,935
Certificates of Deposit	\$18,600	\$18,600	\$18,600	\$18,600	\$18,600
Agency Securities (B)	\$9,167,668	\$8,138,160	\$8,153,670	\$8,716,494	\$8,780,188
Mortgaged Backed Securities	\$0	\$0	\$0	\$0	\$0
Equity Securities (C)	\$10,027,207	\$6,591,396	\$9,994,604	\$6,591,396	\$10,411,134
Mutual Funds	\$56,394,208	\$53,056,172	\$55,530,957	\$53,256,516	\$55,972,851
Municipal Bonds (E)	\$0	\$0	\$0	\$0	\$0
Corporate Bonds (D)	\$6,373,365	\$7,063,835	\$7,320,340	\$7,063,835	\$7,310,390
Total	\$84,672,531	\$77,747,791	\$83,897,799	\$78,489,432	\$85,335,754
Other Funds					
Cash/Sweeps	\$7,472,995	\$7,667,764	\$7,667,764	\$7,798,761	\$7,798,761
Money Market Accounts/Repos (A)	\$77,691,185	\$62,531,824	\$62,531,824	\$75,590,890	\$75,590,890
Agency Securities (B)	\$21,366,224	\$21,153,983	\$21,390,885	\$21,153,983	\$21,499,389
Equity Securities (C)	\$499,373	\$0	\$466,488	\$0	\$458,552
Total	\$158,945,292	\$130,507,991	\$131,233,356	\$131,399,657	\$132,217,888
Grand Total	\$947,385,910	\$941,708,054	\$944,793,715	\$937,300,756	\$944,035,658
Deposits in Financial Institutions					
Total Cash/Sweeps/MMA/Repos	\$343,212,982	\$312,022,903	\$312,022,903	\$338,003,677	\$338,003,677
Total Certificates of Deposit	\$12,118,600	\$8,118,600	\$8,118,600	\$8,118,600	\$8,118,600
US Gov Related Securities	\$63,308	\$56,307	\$56,307	\$51,373	\$51,373
Total Deposits	\$355,394,890	\$320,197,810	\$320,197,810	\$346,173,650	\$346,173,650
Other Investments					
Treasury Notes	\$60,793,832	\$50,037,227	\$50,037,518	\$32,773,713	\$32,840,803
CMO's	\$4,397,354	\$3,812,071	\$3,931,562	\$3,379,427	\$3,463,838
Agency Securities (B)	\$189,385,347	\$215,014,558	\$215,063,515	\$201,617,130	\$203,995,966
Mortgaged Backed Securities	\$24,290,792	\$25,402,855	\$25,715,176	\$26,907,513	\$27,387,527
Equity Securities (C)	\$10,526,643	\$6,591,396	\$10,543,400	\$6,591,396	\$10,952,561
Bond Mutual Funds	\$44,587,216	\$46,697,531	\$43,315,615	\$46,697,531	\$43,292,425
Mutual Funds	\$56,394,208	\$53,056,172	\$55,530,957	\$53,256,516	\$55,972,851
Municipal Bonds (E)	\$44,260,206	\$46,586,756	\$44,284,729	\$48,350,607	\$46,854,360
Corporate Bonds (D)	\$157,355,422	\$174,311,678	\$176,173,433	\$171,553,273	\$173,101,677
Total Other	\$591,991,020	\$621,510,244	\$624,595,905	\$591,127,106	\$597,862,008
Grand Total	\$947,385,910	\$941,708,054	\$944,793,715	\$937,300,756	\$944,035,658
LSU Paid Campuses					
Current Funds					
Cash/Sweeps	\$69,854,093	\$60,064,286	\$60,064,286	\$71,349,948	\$71,349,948
Money Market Accounts/Repos (A)	\$265,852	\$785,018	\$785,018	\$6,951,634	\$6,951,634
Certificates of Deposit	\$12,000,000	\$8,000,000	\$8,000,000	\$8,000,000	\$8,000,000
Treasury Notes	\$5,952,180	\$7,947,969	\$7,935,320	\$5,969,063	\$6,021,880
CMO's	\$4,397,354	\$3,812,071	\$3,931,562	\$3,379,427	\$3,463,838
Agency Securities (B)	\$141,403,590	\$177,723,642	\$177,666,575	\$158,620,667	\$160,639,379
Mortgaged Backed Securities	\$24,290,792	\$22,862,624	\$23,166,153	\$22,421,222	\$22,908,244
Equity Securities (C)	\$63	\$0	\$82,308	\$0	\$82,875
Bond Mutual Funds	\$44,587,216	\$46,697,531	\$43,315,615	\$46,697,531	\$43,292,425
Municipal Bonds (E)	\$43,290,244	\$45,598,524	\$43,314,546	\$45,546,081	\$44,066,827
Corporate Bonds (D)	\$146,096,367	\$157,929,049	\$159,609,600	\$154,456,363	\$155,844,196
Total	\$492,137,751	\$531,420,714	\$527,870,983	\$523,391,936	\$522,621,246
Endowment Funds					
Money Market Accounts/Repos (A)	\$48,094	\$232,322	\$232,322	\$191,935	\$191,935
Certificates of Deposit	\$18,600	\$18,600	\$18,600	\$18,600	\$18,600
Agency Securities (B)	\$9,167,668	\$8,138,160	\$8,153,670	\$8,716,494	\$8,780,188
Mortgaged Backed Securities	\$0	\$0	\$0	\$0	\$0
Equity Securities (C)	\$10,015,161	\$6,583,746	\$9,983,327	\$6,583,746	\$10,398,018
Corporate Bonds (D)	\$6,373,365	\$7,063,835	\$7,320,340	\$7,063,835	\$7,310,390
Total	\$25,622,888	\$22,036,663	\$25,708,259	\$22,574,610	\$26,699,131
Other Funds					
Money Market Accounts/Repos (A)	\$69,299,252	\$54,129,726	\$54,129,726	\$67,180,317	\$67,180,317
Treasury Notes	\$51,852,207	\$39,098,113	\$39,120,088	\$26,804,650	\$26,818,923
Agency Securities (B)	\$21,366,224	\$21,153,983	\$21,390,885	\$21,153,983	\$21,499,389
Total	\$142,517,683	\$114,381,822	\$114,640,699	\$115,138,950	\$115,498,629
Grand Total	\$660,278,322	\$667,839,199	\$668,219,941	\$661,105,496	\$664,819,006

LSU
Investment Summary
For the Quarter Ended December 31, 2014

	As of 7/1/2014	As of 9/30/2014		As of 12/31/2014		As of 3/31/2015		As of 06/30/2015	
Fund Description	Value	Cost	Market Value	Cost	Market Value	Cost	Market Value	Cost	Market Value
LSU Health Shreveport									
Current Funds									
Cash/Sweeps S.	\$76,506,844	\$69,267,534	\$69,267,534	\$66,239,575	\$66,239,575				
Cash/Sweeps C.	\$2,698,625	\$4,884,656	\$4,884,656	\$2,703,079	\$2,703,079				
Cash/Sweeps H.	\$7,537,281	\$5,714,259	\$5,714,259	\$3,382,338	\$3,382,338				
Money Market Accounts/Repos S.									
Cash/Sweeps	\$86,742,750	\$79,866,449	\$79,866,449	\$72,324,992	\$72,324,992	\$0	\$0	\$0	\$0
Money Market Accounts/Repos (A)									
Treasury Notes (B)	\$2,989,445	\$2,991,145	\$2,982,110						
Agency Securities (B)	\$17,447,865	\$7,998,773	\$7,852,385	\$13,125,986	\$13,077,010				
Mortgaged Backed Securities (B)		\$2,540,231	\$2,549,023	\$4,486,291	\$4,479,283				
Municipal Bonds (E)	\$969,962	\$988,232	\$970,183	\$2,804,526	\$2,787,533				
Corporate Bonds (D)	\$4,885,690	\$9,318,794	\$9,243,493	\$10,033,075	\$9,947,091				
Total	\$113,035,712	\$103,703,624	\$103,463,643	\$102,774,870	\$102,615,909	\$0	\$0	\$0	\$0
Endowment Funds									
Cash/Sweeps	\$2,592,560	\$2,595,973	\$2,595,973	\$2,599,323	\$2,599,323				
Equity Securities (C)	\$12,046	\$7,650	\$11,277	\$7,650	\$13,116				
Mutual Funds	\$56,394,208	\$53,056,172	\$55,530,957	\$53,256,516	\$55,972,851				
Total	\$58,998,814	\$55,659,795	\$58,138,207	\$55,863,489	\$58,585,290	\$0	\$0	\$0	\$0
Grand Total	\$172,034,526	\$159,363,419	\$161,601,850	\$158,638,359	\$161,201,199	\$0	\$0	\$0	\$0
LSU HCSD									
Current Funds									
Cash/Sweeps	\$97,080,549	\$95,277,300	\$95,277,300	\$99,419,575	\$99,419,575				
Total	\$97,080,549	\$95,277,300	\$95,277,300	\$99,419,575	\$99,419,575	\$0	\$0	\$0	\$0
Other Funds									
Cash/Sweeps	\$7,197,883	\$7,389,927	\$7,389,927	\$7,520,924	\$7,520,924				
Money Market Accounts/Repos (A)	\$8,391,933	\$8,402,098	\$8,402,098	\$8,410,573	\$8,410,573				
Equity Securities (C)	\$499,373	\$466,488	\$466,488		\$458,552				
US Gov Related Securities	\$63,308	\$56,307	\$56,307	\$51,373	\$51,373				
Total	\$16,152,497	\$15,848,332	\$16,314,820	\$15,982,870	\$16,441,422	\$0	\$0	\$0	\$0
Grand Total	\$113,233,046	\$111,125,632	\$111,592,120	\$115,402,445	\$115,860,997	\$0	\$0	\$0	\$0
LSU - Shreveport									
Current Funds *									
Cash/Sweeps	\$1,404,024	\$2,940,574	\$2,940,574	\$1,715,217	\$1,715,217	\$0	\$0		
Money Market Accounts/Repos (A)	\$10,051	\$10,060	\$10,060	\$10,069	\$10,069	\$0	\$0		
Certificates of Deposit	\$100,000	\$100,000	\$100,000	\$100,000	\$100,000				
Total	\$1,514,075	\$3,050,634	\$3,050,634	\$1,825,286	\$1,825,286	\$0	\$0	\$0	\$0
Endowment Funds									
Cash/Sweeps	\$50,829	\$51,333	\$51,333	\$51,333	\$51,333				
Total	\$50,829	\$51,333	\$51,333	\$51,333	\$51,333	\$0	\$0	\$0	\$0
Other Funds									
Cash/Sweeps	\$275,112	\$277,837	\$277,837	\$277,837	\$277,837				
Total	\$275,112	\$277,837	\$277,837	\$277,837	\$277,837	\$0	\$0	\$0	\$0
Grand Total	\$1,840,016	\$3,379,804	\$3,379,804	\$2,154,456	\$2,154,456	\$0	\$0	\$0	\$0
System Total	\$947,385,910	\$941,708,054	\$944,793,715	\$937,300,756	\$944,035,658	\$0	\$0	\$0	\$0

* LSUS has deposited \$1,245,281 with LSU Baton Rouge Campus for investment purposes

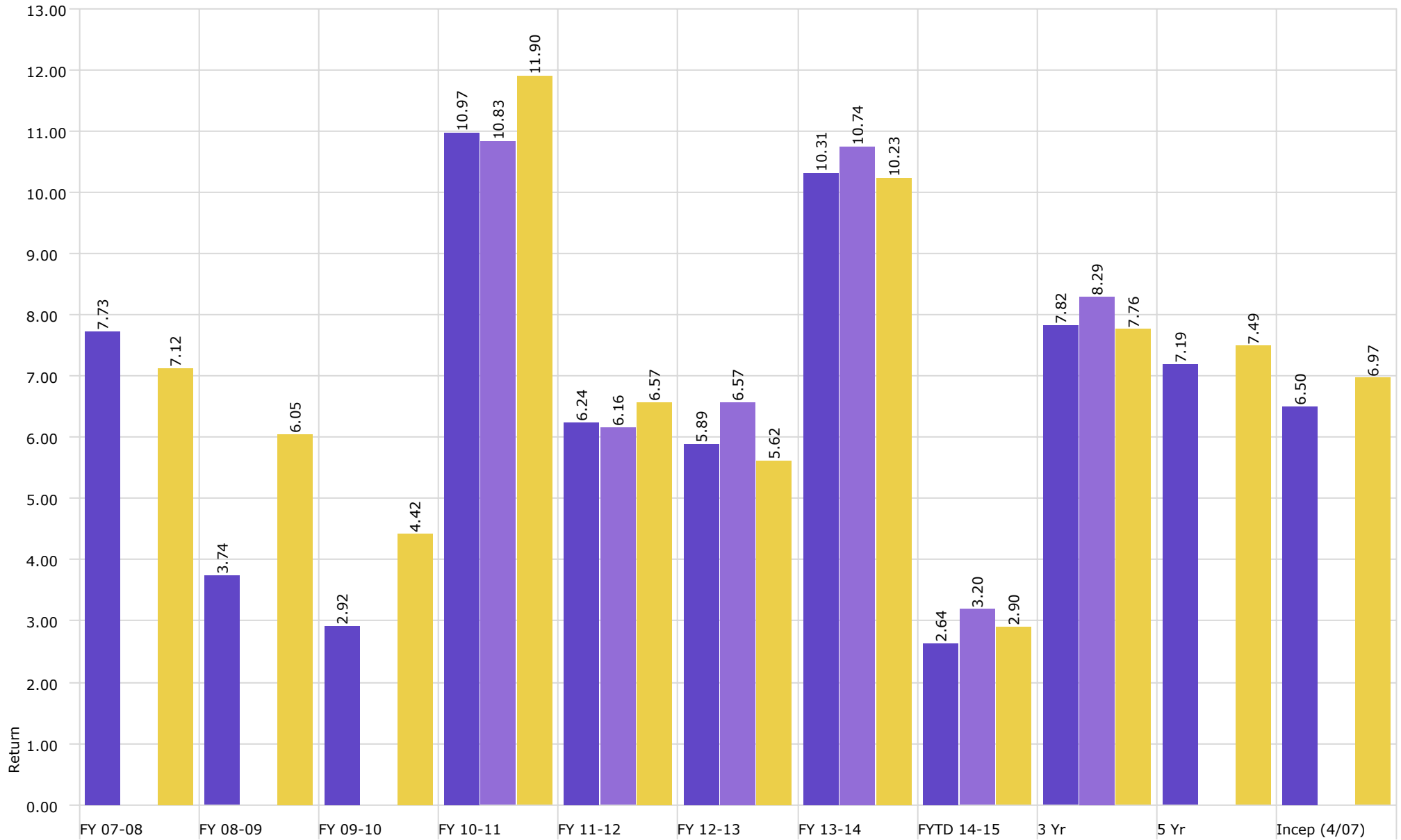
BENCHMARK NOTES (Example Only)

- (A) Benchmarked against 90 day T-Bill
 (B) Benchmarked against Barclay's US Agg Bond TR USD
 (C) US equities benchmarked against Russell 3000 and international against MSCI emerging market
 (D) Benchmarked against XYZ
 (E) Benchmarked against XYZ

Disclaimer: Pursuant to PM-9, corporate bonds/notes only available for investment beginning 7-1-2011
 Louisiana law provides for restrictions on maturity and allocation and may effect benchmark comparison:

Investment Management Program Endowed Accounts Total Return

As of 12/31/2014



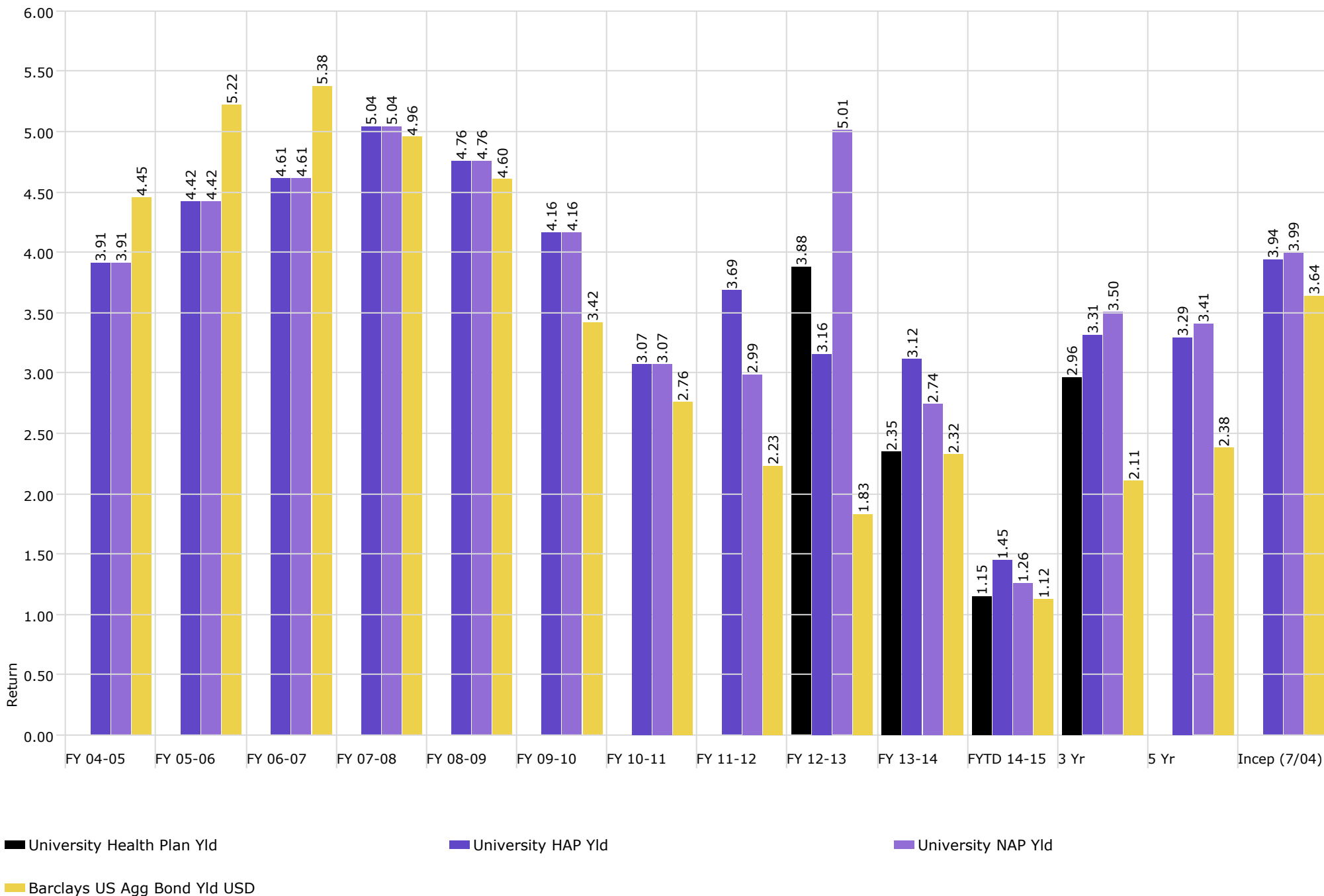
■ University Endowment

■ University Osher Endowment

■ University Endowed Benchmark

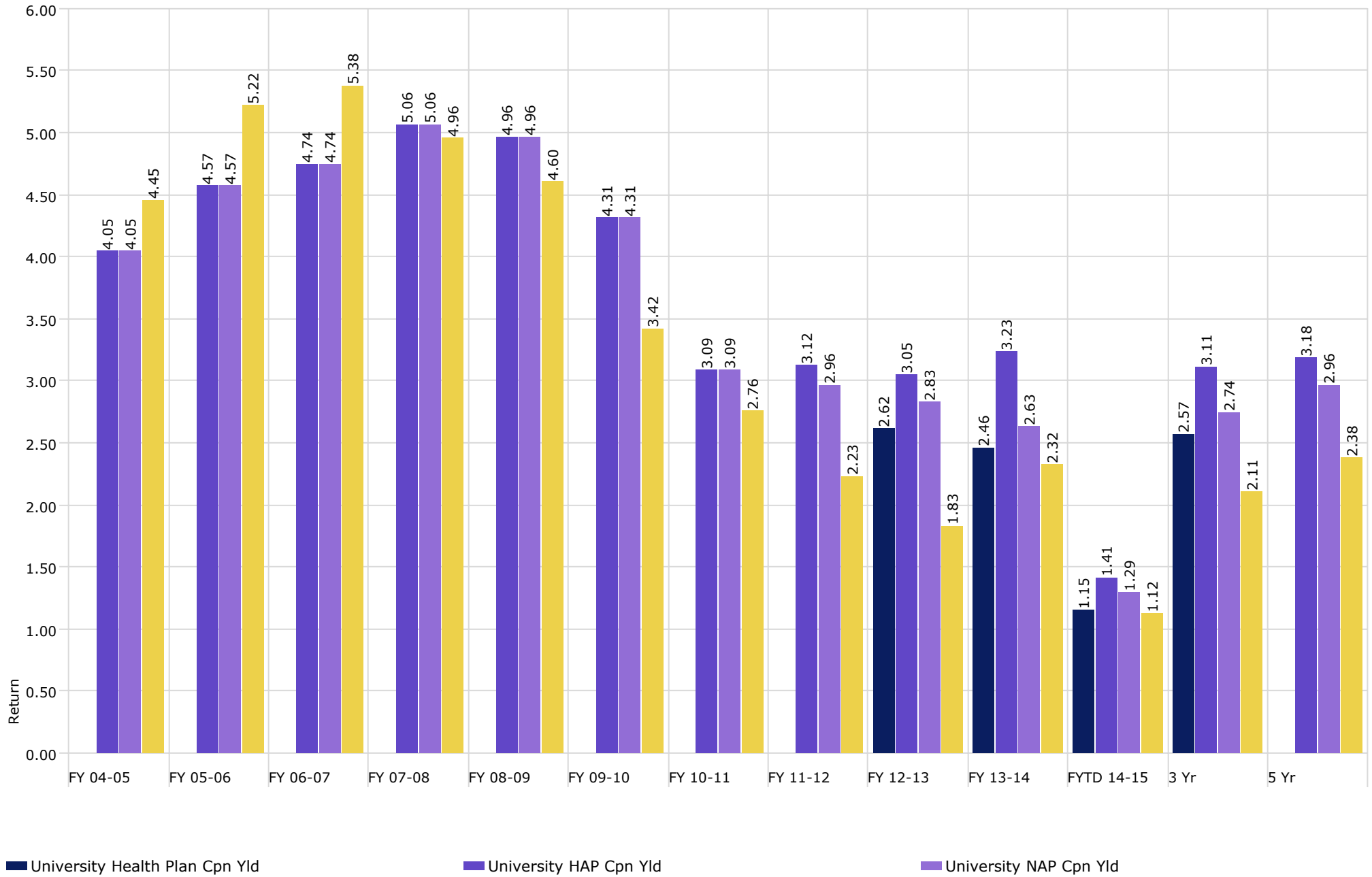
Investment Management Program Non Endowed Account (ex CDs) **Realized Yield**

As of 12/31/2014



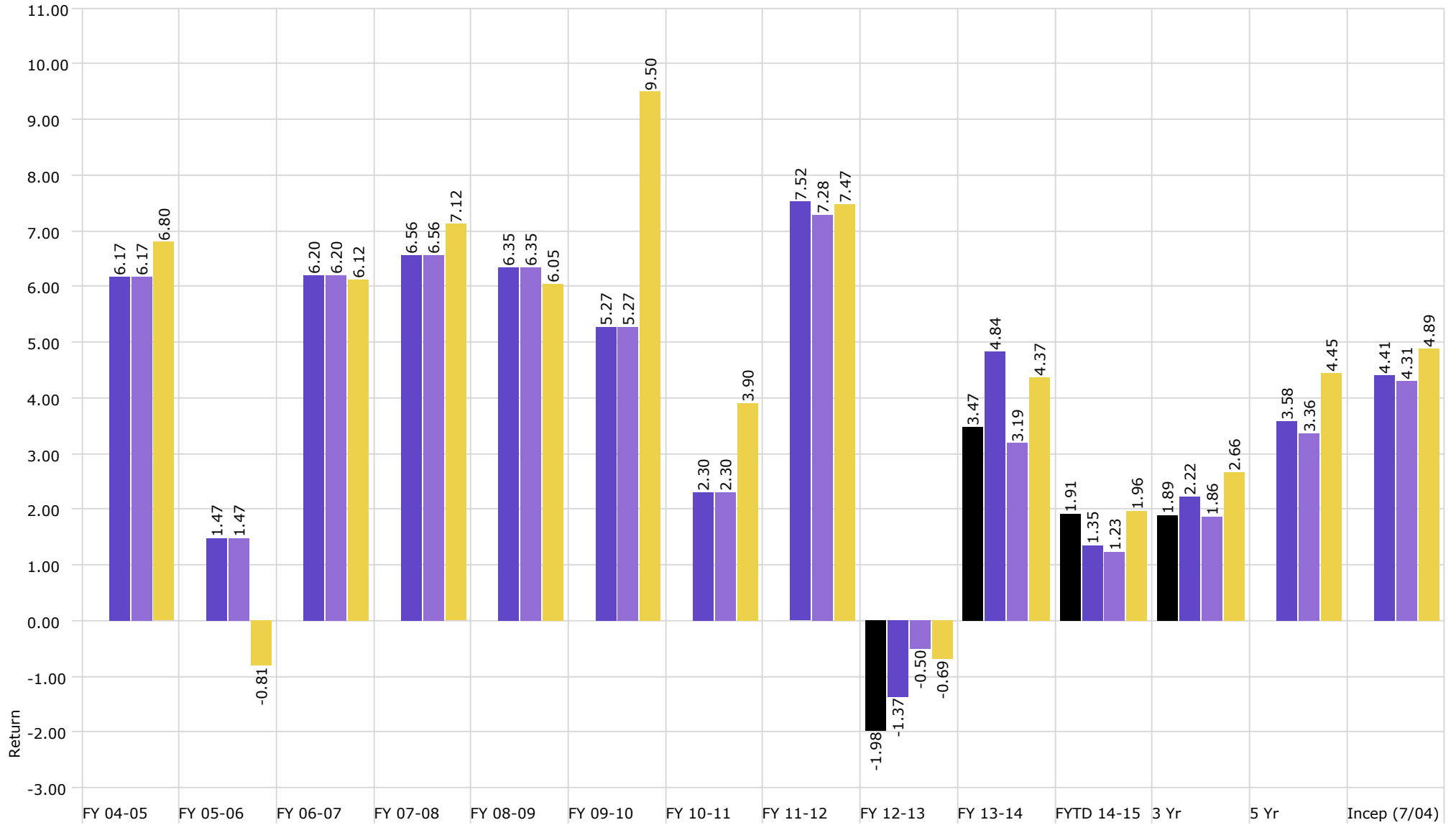
Investment Management Program Non Endowed Account (ex CDs) Coupon Yield

As of 12/31/2014



Investment Management Program Non Endowed Account (ex CDs) Total Return

As of 12/31/2014



University Health Plan

University HAP

University NAP

Barclays US Agg Bond TR USD