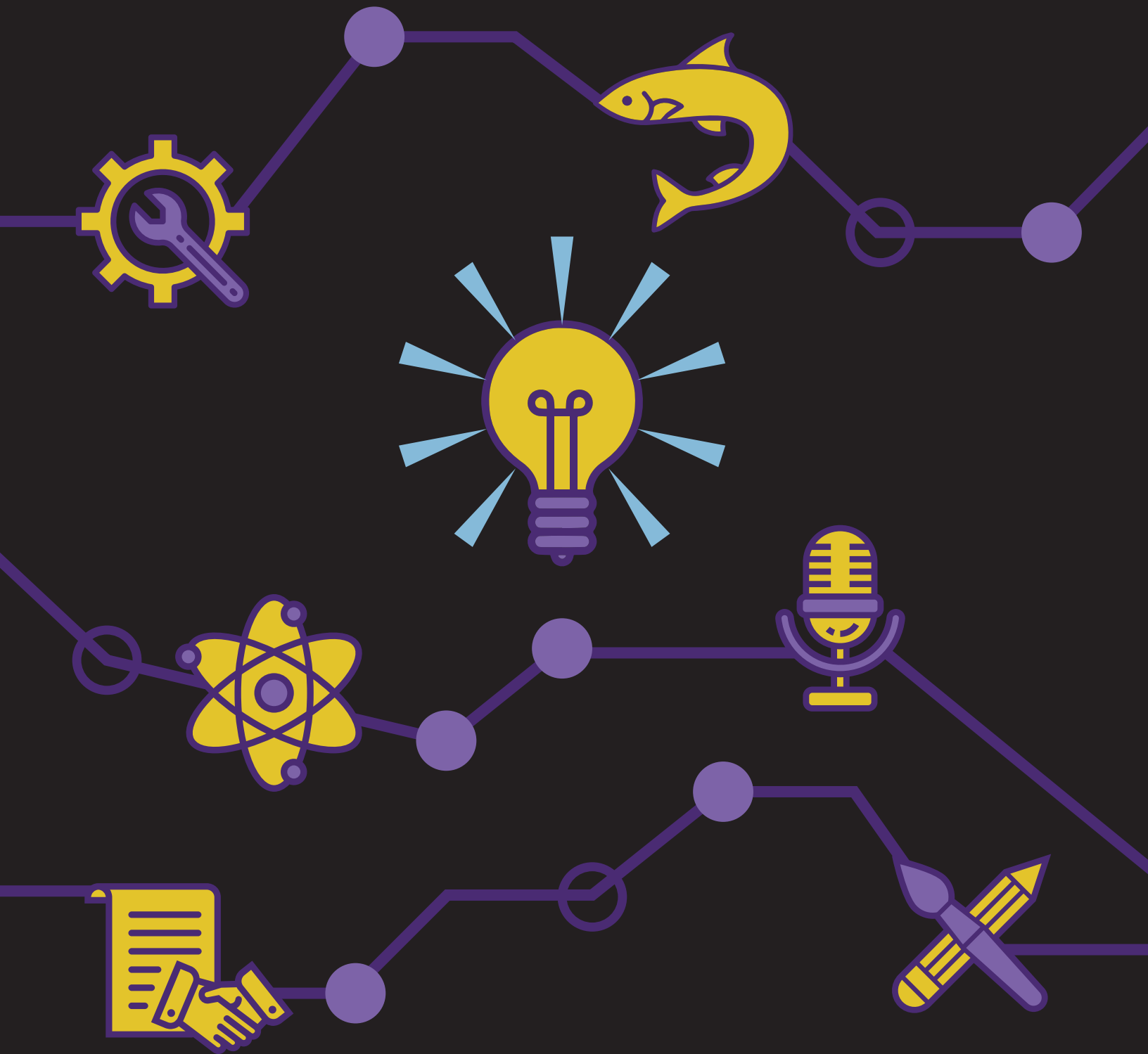


# DISCOVER DAY [2022]



Louisiana State University's  
Undergraduate Research & Creativity Symposium

April 22, 2022

# DISCOVER DAY 2022

## TABLE OF CONTENTS

<b>3</b>	Schedule of Events
<b>4</b>	Map: Posters & Visual Displays
<b>5-13</b>	Posters
<b>14</b>	Poetry Readings
<b>14-19</b>	Oral Presentations
<b>19</b>	Virtual & Guest Presentations
<b>20</b>	Visual Displays
<b>21</b>	Student Panels
<b>22</b>	Faculty Panels
<b>23</b>	Student Art Show
<b>24</b>	Keynote Speaker
<b>25-26</b>	Special Thanks

## WELCOME TO LSU DISCOVER DAY 2022!

LSU Discover Day is a university-wide undergraduate symposium that provides a platform for students from all disciplines to share their research and creative projects. Student presentations include readings, posters, visual displays, art exhibitions, and oral presentations. This event allows the LSU community a chance to publicize and reflect on undergraduate student success in discovery, creativity, and research.

# SCHEDULE OF EVENTS

*All locations in the LSU Student Union*

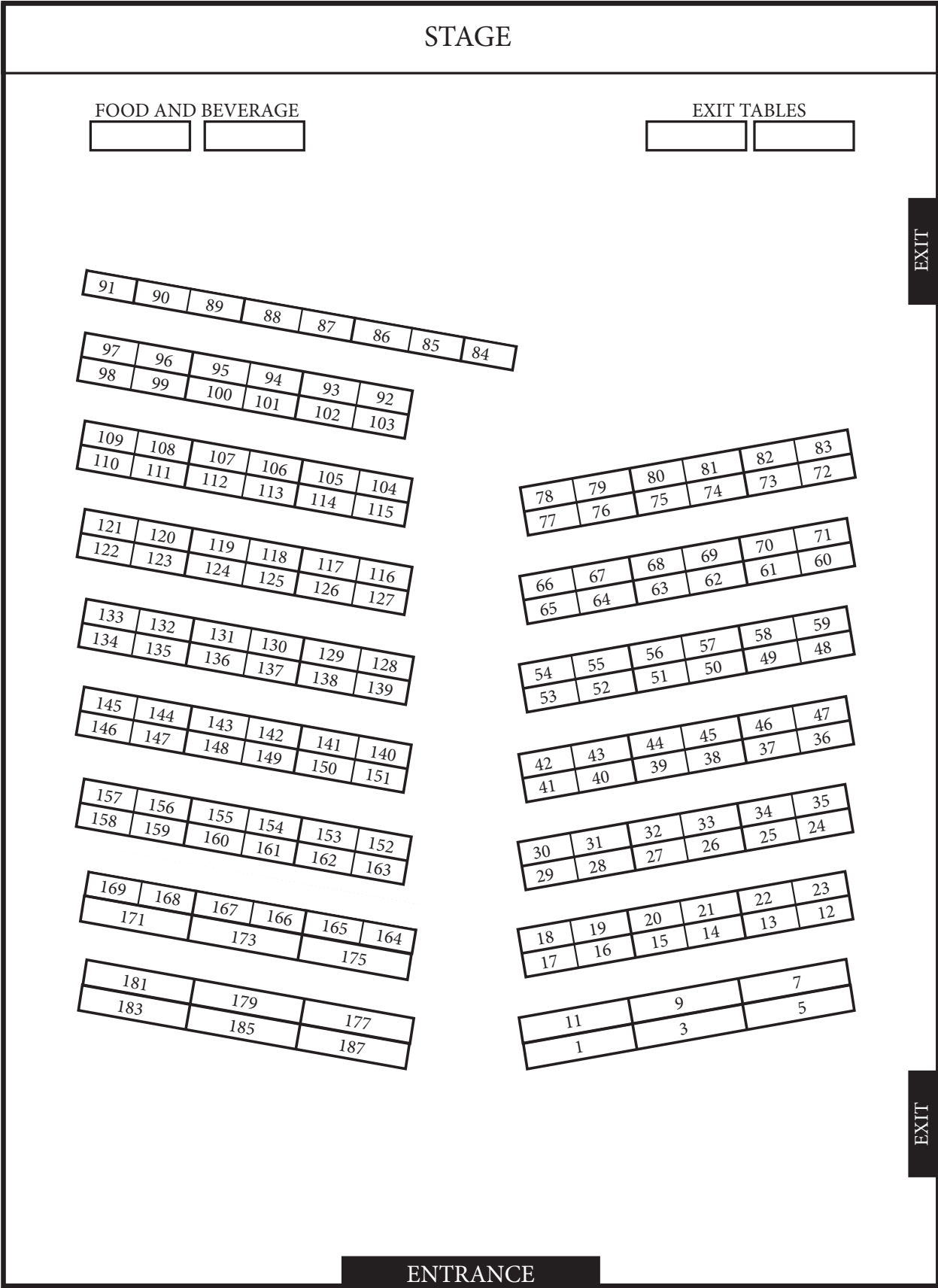
<b><u>Time</u></b>	<b><u>Event</u></b>	<b><u>Location</u></b>
7:30 a.m. - 6:00 p.m.	<b>Check-In Desk Open</b>	2nd Floor East Lobby (next to Cotillion Ballroom)
8:00 a.m. - 8:30 a.m.	<b>Breakfast and Welcome Remarks</b>	Cotillion Ballroom, Room 250
8:30 a.m. - 12:15 p.m.	<b>Morning Oral Presentations</b>	Feliciana, Room 208 International, Room 303 Castilian, Room 304 Vieux Carré, Room 325
9:00 a.m. - 11:00 a.m.	<b>Morning Poster Session</b>	Cotillion Ballroom, Room 250
11:00 a.m. - 12:00 p.m.	<b>Virtual Presentations</b>	See page 19 for more info.
11:00 a.m. - 12:00 p.m.	<b>Presenter Lunch Break A</b>	Atchafalaya, Room 339
12:00 p.m. - 1:00 p.m.	<b>Presenter Lunch Break B</b>	Atchafalaya, Room 339
12:00 p.m. - 1:00 p.m.	<b>Guest Presenter: Chrissy Adams, NASA</b>	Capital Chamber, Room 329
1:00 p.m. - 5:00 p.m.	<b>Afternoon Oral Presentations &amp; Student Panels</b>	Feliciana, Room 208 International, Room 303 Castilian, Room 304 Red River, Room 323 Vieux Carré, Room 325 Capital Chamber, Room 329
1:00 p.m. - 3:00 p.m.	<b>Afternoon Poster &amp; Visual Display Session</b>	Cotillion Ballroom, Room 250
3:15 p.m. - 4:15 p.m.	<b>Faculty Panel A - Pursuing Research Careers in Humanities, Social Sciences &amp; the Arts</b>	Capital Chamber, Room 329
4:30 p.m. - 5:30 p.m.	<b>Faculty Panel B - Pursuing Research Careers in STEM Disciplines</b>	Capital Chamber, Room 329
4:00 p.m. - 6:00 p.m.	<b>Art Show</b>	Magnolia, Room 301
6:00 p.m. - 7:30 p.m.	<b>Keynote Speech &amp; Awards Ceremony</b> <i>Keynote Speaker: Dr. Michelle Zerba</i>	Atchafalaya, Room 339

## ABOUT LSU DISCOVER

The LSU Discover Undergraduate Research Program, which hosts Discover Day, promotes and supports student participation in faculty mentored research and creative activities. For students looking to become involved in undergraduate research, we offer assistance in finding a mentor, events to learn more about undergraduate research, and opportunities to talk to research students about their experiences in any major. For students who are currently involved in undergraduate research, we offer funding for research and travel, workshops, and the Distinguished Undergraduate Researcher Program.

To learn more about LSU Discover, visit [lsu.edu/discover](http://lsu.edu/discover)

# ROYAL COTILLION BALLROOM MAP POSTER & VISUAL DISPLAY PRESENTATIONS



# POSTERS

Morning Session | 9:00 - 11:00 AM | Royal Cotillion Ballroom, Room 250

All presenters are Louisiana State University students unless otherwise noted.

## KEY

<b>B</b>   Baton Rouge Community College	<b>I</b>   Indiana University Bloomington	<b>SA</b>   School of Art Institute of Chicago
<b>BM</b>   Baton Rouge Magnet High School	<b>L</b>   Loyola University New Orleans	<b>SM</b>   Scotlandville Magnet High School
<b>BU</b>   Baylor University	<b>LE</b>   Louisiana State University Eunice	<b>SU</b>   Southern University A&M
<b>D</b>   Denison University	<b>M</b>   Massachusetts Institute of Technology	<b>T</b>   Texas Christian University
<b>DU</b>   Dillard University	<b>MN</b>   McNeese State University	<b>UT</b>   The University of Texas at Tyler
<b>E</b>   Edgewood College	<b>MS</b>   Mississippi State University	<b>UL</b>   University of Louisiana Monroe
<b>H</b>   Hamilton College	<b>N</b>   Nicholls State University	<b>W</b>   Westminster College

## SCIENCE

#	Student	Title	Mentor
152	Mohammad AbdelFattah <b>N</b>	Development of Ligand-Free, Open-Air, Cu (II) Catalyzed N-Arylation of Amino Alcohols and Amines	Rajesh Komati
80	Cecilia Aucoin	<i>Vibrio Cholera</i> Fur Maintains Iron Homeostasis Via Binding of an Iron Sulfur Cluster	Huangen Ding
24	Casey Butler	Identification and Physiological Characterization of Potential New Players of Photorespiration Using an in Silico Approach	Paul South
156	Timothy Chen	Mitochondrial Carbonic Anhydrases are Required for Optimal Levels of Carbon Fixation for Photosynthesis in the Green Alga <i>Chlamydomonas Reinhardt II</i>	James Moroney
78	Charity Cooper	Effects of Olanzapine on Short-Access Sucrose Preference in Mice	Paul Soto
76	Kaitlin Couvillion	Sulfur Dust Bags as a Potential Non-Toxic Ectoparasite Treatment in Free-Living Songbirds	Christine Lattin
74	Macallister Davis	Rotaxanes Modulate the Plasma Membrane Structure and Dynamics	Victor Garcia-Lopez
72	Kendall DiIulio	Improving Photosynthetic Efficiency of Lettuce for Space Colonization	Paul South
56	Kylie Domangue	Model Fit across Mammalian Genetics	Jeremy Brown
60	Evan Dore	Urination and Aggravation: Status-Relevant Visual and Chemosensory Signals Escalate Aggressive Interactions in an African Cichlid Fish	Karen Maruska
66	Joshua Fabre	Real Time Quantum Imaging with Few Photons	Omar Magana-Loaiza
68	Britt Faulk	Lewis Catalyzed Synthesis of All-Carbon Quaternary Centers for Regioselective Spiroindolenine Core Formation	Fatima Rivas
70	Chelsey Fontenot	Vibration of Drumhead: Sizes in the Music	Jiuyi Zhu
62	Emily Garcia	Role of a Conserved Membrane Protein Family in Antibiotic Sensitivity and Virulence of the Multidrug Resistant Human Pathogen <i>Klebsiella pneumoniae</i>	William Doerrler
14	Jason Garcia, August Steinkamp	Salt-Resilient Growth in the Extremophyte, <i>Schrenkiella parvula</i> , Assessed by Halotrophism	Maheshi Dassanayake
18	Tarry Glover, Brittany Lee, Abhi Mehrotra, Kendall White <b>B</b>	Driving Water Parameters of the Three Most Abundant Freshwater Sponge Species in Louisiana	Mary Miller
48	Alexa Gonzalez	Evolution of Type IIA Topoisomerases in Extremophilic Bacteria	Jeremy Brown
58	Chris Gupta	Molecular Dynamics Simulations of Sodium Triflate and TFSI with Mixed Glyme Solvents	Revati Kumar
28	Casey Hanna	Responses of H <sub>2</sub> Oxidizers to Water Stress	Gary King
50	Courtney Harding	Estradiol and Predator Cues Affect Behavior of Female House Sparrows in Captivity	Christine Lattin

# POSTERS

Morning Session | 9:00 - 11:00 AM | Royal Cotillion Ballroom, Room 250

## SCIENCE

#	Student	Title	Mentor
52	Jessie Hayden	Extraction and Purification of Pheophorbide a from <i>Spirulina Maxima</i>	Graca Vicente
64	Axel Henriquez, Kenzie Cook, Lisa Dimaggio, Amori Bieller <b>B</b>	Can Sediment Analysis Be Used to Further Describe Species Diversity of Freshwater Sponges?	Mary Miller
36	Corrine Hutchinson	Exploring the Effects of TBI and Alcohol in Inducing Proteinopathy in the Lumbar Spinal Cords of Rodents: Potential Role of ISGylation	Shyamal Desai
42	Blaze Jones	AtPLGG1 Positively Influences Lateral Root Growth in Roots in <i>Arabidopsis</i> Seedlings in Response to Salt Stress	Paul South
106	Lukas Kim	Observing Reactive Events at the Aqueous Graphene Oxide (GO) Interface Using Neural Network Potentials	Revati Kumar
44	Katy Knecht	Solution Stability Studies on Nitrogen Oxyanions	Noémie Elgrishi
102	Emma Lane	Effects of Clay Fillers on Front Velocity of Radical-Induced Cationic Frontal Polymerization and the Auto-Propagation Effects of Montmorillonite Clay	John Pojman
46	Madison LeBlanc	Model Fitting of Boyajian's Star	Tabetha Boyajian
32	Tehya Littleton <b>L</b>	Extremophilic Specialization in Bacterial Topoisomerases Revealed through Bioinformatic Analyses	Allyn Schoeffler
38	Paige Long	The Effect of Resource Quality on <i>Spodoptera frugiperda</i> Growth, Development, and Cannibalistic Consumption in Relation to Viral Transmission	Bret Elder
40	Grant Lopez	Ship Shoal Block 88 Dredge Pit Infill Characteristics	Carol Wilson
54	Jemiah Maxie	Multidimensional Tomography	Les Butler
108	Matthew McCoy, Dylan Spedale	Fourier Analysis Over Finite Fields	Fan Yang
112	Devin Meche	Electrochemical Reduction of Hexavalent Chromium in Acidic Buffers	Noémie Elgrishi
162	Abhi Mehrotra, Kenzie Cooke <b>B</b>	The Louisiana Freshwater Sponge Project: Examining Changes in Species Diversity Through a Comparison of Two Ecological Studies	Mary Miller
34	Jack Menard	Development of <i>Erythrina</i> Alkaloid-inspired Theragnostic Probes with Promising Physicochemical and Fluorescent Properties	Fatima Rivas
30	John Mintken <b>L</b>	Bioinformatic Analyses of Paralogous RNA Methyltransferases Reveal Determinants of Substrate Specificity	Allyn Schoeffler
20	Walid Mohammed	Inhibition of Lipolysis Prevents Adverse Outcomes During Glucocorticoid Therapy	Robert Noland
110	Kaya Mondry <b>E</b>	Bioactive Marine Secondary Metabolites in Cold Water Arctic Regions	Jerry Hoff
12	Grayce Mores	Discovery and Analysis of Unique Alu Insertions in the Capuchin Monkey Species, <i>Sapajus apella</i>	Mark Batzer
154	Marz Newman	The Relationship Between <sup>13</sup> CO/ <sup>18</sup> O and Star Formation Rate Surface Density	Matthew Penny
158	Calli Nguyen	Discovery of Natural Products Inhibiting Glucocorticoid Resistant Leukemia Cellular Models	Fatima Rivas
22	Hayden Noblet	The Impact of Hyperpolarization-Activated Cyclic Nucleotide-Gated (HCN) Channel Blockade with ZD7288 in the Mouse Brain: A Histological Evaluation	Juhee Haam
160	Sophie Ntipouna	A Host-Guest Complex: The Effect of Pd Molecular Cages on PFOS and PFOA Chemicals	Noémie Elgrishi

# POSTERS

Morning Session | 9:00 - 11:00 AM | Royal Cotillion Ballroom, Room 250

## SCIENCE

#	Student	Title	Mentor
16	Oluwatobi Ojemakinde	Investigating the Role of BEAF in Mediating Long-Distance Chromatin Looping	Craig Hart
104	Emily O'Quin	Single-Cell Transcriptomic Analysis of <i>Siah2</i> Expression in Adipose Tissue	Elizabeth Floyd
114	Roy Pace	Optimizing Quantum Networks with Machine Learning	Hwang Lee
116	Zoe Patton	Evaluating Aluminum-Based Adjuvants with Different Excipients for the Development of Vaccine Products	Amy Xu
128	Lillian Powell	Free Oscillations of Coupled Strings	Stephen Shipman
126	Jenny Quach	Effects of Antifungal Treatment on <i>Aspergillus fumigatus</i> Cell Wall Characterized by Solid-State Nuclear Magnetic Resonance Spectroscopy	Tuo Wang
26	Cally Quick	Expression of Neonatal Fc Receptor (FcRn) and Cytotoxicity of Albumin-Conjugated Ansamitocin P-3 in Human and Canine Osteosarcoma (OSA) Cell Lines	Sita Withers
140	Rachel Ramos <b>L</b>	<i>In Silico</i> Allosteric Network Predicts Variation in Response for Drugs Against Human Kinesin-5	Sunyoung Kim
144	Abigail Randolph	Identifying Oxytocin Receptor Expressing Cells in the Gastrointestinal Tract of Adult Mice	Ryoichi Teruyama
132	Madison Rolando <b>N</b>	Study of Nurdle Accumulation on Grand Isle and Elmer's Island, Louisiana	Matthew Marlow
148	Pilar Ruiz	Role of Lung Mesenchymal Stem Cells in Secondhand Cigarette Smoke Exposure- Mediated Bacterial Exacerbation	Samithamby Jeyaseelan
142	Robert Schuh <b>L</b>	Biochemical Analyses of Erythromycin Resistance Methyltransferase (Erm) Mutations Reveal Three Crucial Regions for Function	Allyn Schoeffler
146	Emily Seighman	Insight Into <i>Ganoderma multiplicatum</i> Phytochemistry and Its Possible Use as an Anti-cancer Agent	Fatima Rivas
130	Daniel Sentilles	Synthesis of $\alpha$ -terpineol Derivatives Against Cancer Cell Models	Fatima Rivas
124	Alec Sheehy	Ten Years Later: An Update on the Status of Occurrences of Endemic Gulf of Mexico Fish Species Put at Risk by the 2010 Deepwater Horizon Oil Spill	Prosanta Chakrabarty
120	Heejoon Shin <b>BM</b>	Laplacian on Periodic Discrete Graphs	Rui Han
134	Raven Skelton, Makayla Collins, Abhi Mehrotra <b>B</b>	Understanding Preferred Substrates of Louisiana Freshwater Sponges	Mary Miller
122	Toni Story <b>L</b>	Synthesis of a Pyrene-Based Electron Donor for a Charge Transfer Complex	Qian Qin
168	Gloria Tan	Synthesis of Chlorinated Tetrahydropyrans	Rendy Kartika
150	Todd Thibodaux	Effects of Calcium on Boron Toxicity in <i>Schrenkiella parvula</i> and <i>Arabidopsis thaliana</i>	Maheshi Dassanayake
138	Kyron Thomas	Chromism of Platinum Based Complexes	Andrew Maverick
118	Maggie Thomas	Predicting Parental Genotypes in <i>Crassostrea virginica</i> Using Alleles of Offspring	Morgan Kelly
136	Ana Cristina Villalobos Galindo <b>L</b>	Synthesis of Heteroatom-Rich Aromatic Donors and Charge Transfer Complexes for Superconductivity	Qian Qin



# POSTERS

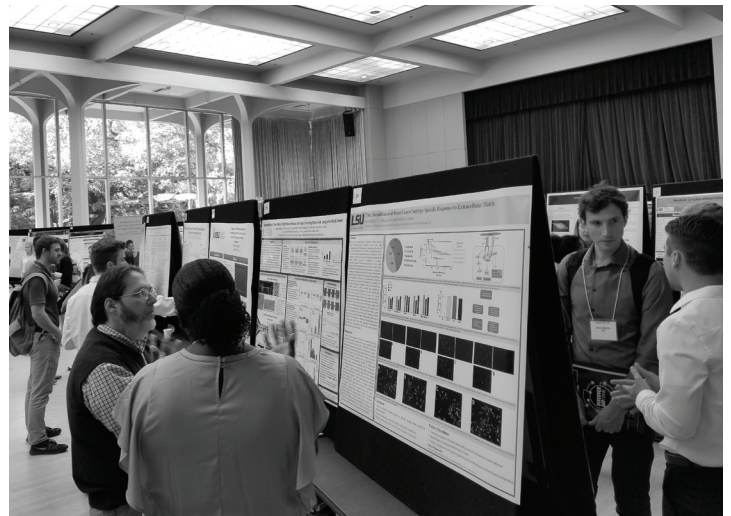
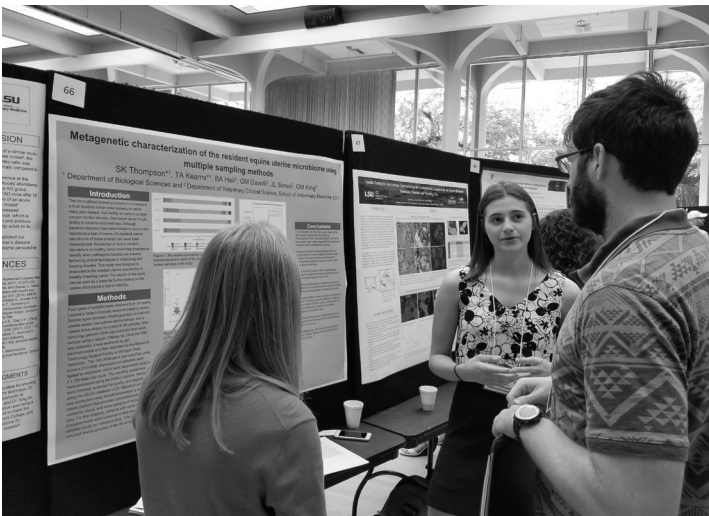
Morning Session | 9:00 - 11:00 AM | Royal Cotillion Ballroom, Room 250

## KINESIOLOGY

#	Student	Title	Mentor
96	Gideon Adeyemo, Tia Watts	Illusionary Effects on Stepping Over Obstacles After Lower Extremity Muscle Fatigue	Jan Hondzinski
92	Michael Crick	Examining the Relationship Between Fitness and Skill of LSU Students	Ryan Hulteen
94	Chloe Glover	Grasping and Asymmetry Correlate with Early Object Storage Actions	Emily Marcinowski

## HUMANITIES & SOCIAL SCIENCES

#	Student	Title	Mentor
164	Jason Florentino D	Militarization of Police	Ashraf Esmail



Past Discover Day



# POSTERS

Afternoon Session | 1:00 - 3:00 PM | Royal Cotillion Ballroom, Room 250

## HUMANITIES & SOCIAL SCIENCES

#	Student	Title	Mentor
67	Joseph Armstrong <b>W</b>	The Health of Lawrence County Immigrants	Russell Martin
41	Brooke Bates <b>UT</b>	The Influence of Personality Dimensions on Instrumental Help-Seeking	Christopher Thomas
69	Alisyn Beard, Norman Rene II, Ted Soileau <b>LE</b>	The Big Five Factor Model of Personality as a Predictor of Health Outcomes	Judson Eldredge
49	Jenna Bourgeois	Who is Given Mercy? A Look into America's Clemency Process and How it Varies Across States	Anna Gunderson
51	Eathan Breaux	Cognitive Correlates of Digit Span Subtests in Older Adults with and without Mild Cognitive Impairment	Matthew Calamia
71	Abigail Brien	Racial Discrimination and Hazardous Drinking: The Role of Social Anxiety in the Minority Stress Model among Black Drinkers	Julia Buckner
43	Riley Cantrell	Word-Initial /l/ Patterns in African American Vernacular English-Speaking Children	Hyunju Chung
59	Tatum Carver-Dews	Narrative Microstructure Elements as a Tool for Clinical Group Identification Without Dialectal Biases	Janna Oetting
33	Katelyn Davis	Women in Local Government: Race and Gender Variations of Locally Elected Officials	Nichole Bauer
37	Will Decker	Choosing an EEG System: Evaluating the Pros and Cons and Quality of Data Among Two Different Capping Approaches	Julie Schneider
47	Juliette DiCharia	Exploring Biases within Language Screenings: A Study of the PLS-5	Janna Oetting
53	Savannah Fitch <b>UT</b>	Relationship Between Handedness and Test Anxiety	Christopher Thomas
45	Mia Goodson	The Effects of Sub-Chronic Olanzapine Treatment on Sucrose Preference in Mice	Paul Soto
82	Lauryn Grubbs	Black Women, BBLs, and Body Cathexis: A Qualitative Study on the Role Social Media Plays in Promoting the Thick Ideal and Cosmetic Surgery	Casey Stannard
65	Felix Harrison	Digital Phenotyping of Head Movements in High Risk Participants and Patients with Serious Mental Illness	Alex Cohen
35	Hunter Holliday	Are There 100 Acts of Congress Everyone Should Know?	James Stoner
75	Marissa Huber	Failing the b Test: The Influence of Cutoff Scores in a Sample of Adults Referred for Psychoeducational Evaluation	Matthew Calamia
77	Anna Irving <b>UT</b>	The Relationship Between Emotional Intelligence, Self-Efficacy, and Test Anxiety	Christopher Thomas
81	Frankey Leggio	Using Dental Histology to Determine Forensic Significance in Fragmentary Cases	Teresa Wilson
27	Grace Lemoine	Listeners' Perception of Word-Final /l/ and Speaker Age	Hyunju Chung
63	Vivian Luong	Changes in the Phonology of Vietnamese-English Speakers Across Generations	Todd Gibson
29	Isabella Manrique	Examining the Relationship Between Metabolic Syndrome and Depression within the Bogalusa Heart Study	Owen Carmichael
73	Seija Meaux	Evaluating the Role of Climate Change and Land Use Change on Increasing Discharge Within the Wabash River Watershed Over the Past 100 Years	Kory Konsoer

# POSTERS

Afternoon Session | 1:00 - 3:00 PM | Royal Cotillion Ballroom, Room 250

## HUMANITIES & SOCIAL SCIENCES

#	Student	Title	Mentor
83	Sara Pellegrin	Defining Resilience in the Wake of Disasters	Kevin Smiley
39	Anna Pham, Piper Bordes, Emily Wayne	Younger and Older Adults Perceptions of Stressors after a Flood	Katie Cherry
57	Dalton Puckett <b>UT</b>	How Emotional Intelligence and Teacher Efficacy Impact Beliefs about SEL	Christopher Thomas
55	Sarah Seibold	Rediscovery of a Plantation Cemetery at Louisiana State University	Andrew Sluyter
61	Kennedy Simon	Psychological Distress and Posttraumatic Growth: How African American Women Have Been Impacted by Hurricane Katrina Then and Now	Katie Cherry
25	Matthew Willis	Examining Practical Memory Concerns among the Oldest-Old	Katie Cherry
31	Adrienne Wyble	How Does Testing Improve Memory? The Roles of Feedback and Participant Confidence	Heather Lucas

## ENGINEERING

#	Student	Title	Mentor
139	Ryan Clancy	Large-Scale Aerodynamic Testing for Low-Rise Buildings	Aly-Mousaad Aly
147	Rachael Coates	Identifying the Role of MAPK15 in Triple-Negative Breast Cancer	Elizabeth Martin
141	Alejandro Cordova	Design and Characterization of a 3D-printed Microfluidic Device to Study Cancer Chemotaxis and Durotaxis Simultaneously	Adam Melvin
143	Sarah Delhaye	Microwave Assisted Lignin Extraction Using Deep Eutectic Solvents	Dorin Boldor
149	Miller Dickerson	Engineering <i>in vitro</i> Cardiac Fibrosis Model	Philip Jung
157	Hayden Gemeinhardt	Protein-Protein Interaction Prediction Using Distributed Representation and Graph Convolutional Networks	Supratik Mukhopadhyay
151	Nicholas Gonsoulin	Single Cell Analysis of Algae to Elucidate the Mechanism of Swimming Behavior	Adam Melvin
17	Anna Guidry	Accelerated Wound Healing by Oxygen- Generating Tissue Scaffolds	Philip Jung
159	Alejandra Ham	Evaluating the Effects of MFAP2 Overexpression and Breast Cancer Progression	Elizabeth Martin
153	Aubry Hymel	Lignin-Zein Composite: Synthesis, Three-Dimensional Printing, and Microbial Degradation	Bhuvnesh Bharti
155	Sarah Jimenez	Mechanical Properties of Antioxidant and Oxygen-Releasing Lignin Composites	Philip Jung
161	Ashlynn Kelly, Katherine Dao	Catalytic Depolymerization of Waste Polyolefins by Induction Heating: Selective Alkane/Alkene Production	James Dorman
163	Stephanie Lofton	3-D Printed Co-culture Device using Triple- Negative Breast Cancer Cells and Adipose Derived Stem Cells	Adam Melvin
23	Robert Michelson <b>B</b>	Designing an Extruder System to 3D Print an Inflated Extrudate	Mohammad Khondoker

# POSTERS

Afternoon Session | 1:00 - 3:00 PM | Royal Cotillion Ballroom, Room 250

## ENGINEERING

#	<u>Student</u>	<u>Title</u>	<u>Mentor</u>
19	Blake Nassar	Investigation into the Role of Fluid Shear Stress on Enhanced Cancer Extravasation during Metastasis	Adam Melvin
15	Steven Seiden	Your Eyes Won't Lie: Snooping User Privacy from Web Conference Apps	Chen Wang
13	Ignatius Semmes	Development of a 3-D Printed Low-cost Sperm Counting Chamber	Todd Monroe
21	Trevor Thrasher	Directed 3D Chemotaxis of Cancer Cells in Response to Oscillating Chemical Gradients Using a Microfluidic Device	Adam Melvin
145	Hongjie Zhu	Analysis of Aerodynamic Impact on High-Rise Building in a Closed Domain Through Computational Fluid Dynamic Method	Aly-Mousaad Aly

## VETERINARY MEDICINE

#	<u>Student</u>	<u>Title</u>	<u>Mentor</u>
133	Anang Bungwon	MicroRNAs Downregulate the Antiviral Immunity to Pneumovirus Infection	Antonieta Guerrero-Plata
98	Iyana Charles	Shoeing Effects on Motion and Expansion of Laminitic and Unaffected Equine Hooves	Mandi Lopez
129	Juliet Flanagan	Sexual Dimorphism in Preeclamptic BPH/5 Mice Explained by Alterations in Sex Steroid Hormones	Jenny Sones
131	Matthew Schwing	Effects of Leachates from 3D-Resin Printed Objects on Goldfish Sperm Motility and Membrane Integrity	Ahmed Abdelmoneim
137	Chelbye Turner	2-D Cell Culture Model to Test Whether Particulate Matter Air Pollution Induces Vascular Dysfunction Downstream of the Lung via Release of Endothelin-1	Tammy Dugas
135	Alexandria Wachenschwanz	Effects of Daily Oral Administration of Siberian Ginseng on Health and Behavior in Horses	Frank Andrews

## ART & DESIGN

#	<u>Student</u>	<u>Title</u>	<u>Mentor</u>
165	Amanda Marie Carambat	Architectural Representation Precedent Study	Fabio Ribeiro
169	Emma Lefevre N	UX Research and UI Design for a Website: Enhancing the Tourism of the Fake Town of Paradise Springs	Marjan Khatibi

# POSTERS

Afternoon Session | 1:00 - 3:00 PM | Royal Cotillion Ballroom, Room 250

## AGRICULTURE

#	<u>Student</u>	<u>Title</u>	<u>Mentor</u>
101	Caroline Bonin	Optimizing the Delivery of a DNA-Based Vaccine for Protection Against <i>Anaplasma marginale</i>	Richard Cooper
85	Grace Cottingham	Development of Antifeedant Miticides for Control of the Parasitic Mite, <i>Varroa destructor</i>	Daniel Swale
97	Katherine Haver	Using a Wellbeing Website and Educational Seminar to Facilitate Home Cooking by LSU Veterinary Medicine Students	Georgianna Tuuri
99	Landry Higgins	Effects of Pine Straw as a Dietary Supplement for Internal Parasite Control in Pasture Raised Meat Goats	Cathleen Williams
89	Javen Little	Tea Leaf Chemical Composition Altered by Temporary Shade in Louisiana	Yan Chen
93	Abigail Mechatto	The Relationship between Deterrence and Toxicity of Plant Secondary Metabolites against the Fall Armyworm, <i>Spodoptera frugiperda</i>	Michael Stout
91	Katie Miranda	Stationary PIT-tag Readers Provide New Insights on Nest Box Use, Survival and Recruitment of Cavity-Nesting Waterfowl in Louisiana	Kevin Ringelman
95	Genesis Mize	Effects of Hypoxia and Ploidy on Mortality of Eastern Oysters [ <i>Crassostrea virginica</i> ]	Megan La Peyre
87	Harrison Steudlein	Quality and Yield Responses of Louisiana Tea to Nitrogen Fertilizer Treatments	Yan Chen

## COAST & ENVIRONMENT

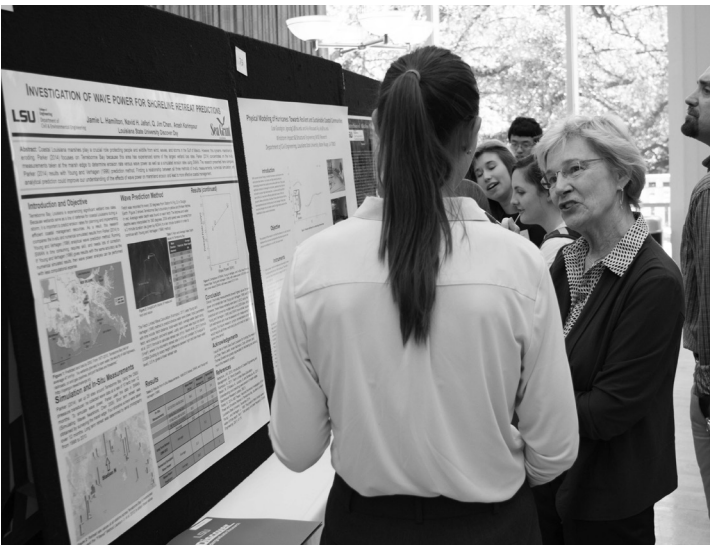
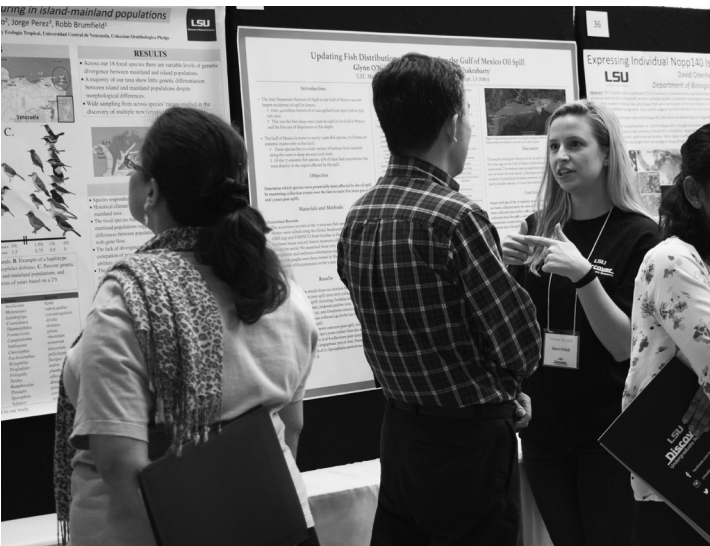
#	<u>Student</u>	<u>Title</u>	<u>Mentor</u>
113	Jayden Barton <b>SM</b>	Effects of Light Intensity on <i>Phaeodactylum tricornutum</i> Growth, Biomass Accumulation and Fucoxanthin Production	Malinda Sutor
107	Kyler Connor <b>SM</b>	The Effect of Seasonal Changes in Nutrients and Temperature on Algal Blooms in a Semi-Suburban Lake	Malinda Sutor
111	Nonnie Cook, Carlie Dutile	Louisiana Salt Marsh Insects	Linda Hooper-Bùi
109	Treasure Hawkins <b>SM</b>	Cyprus Trees: Louisiana's Coastal Protection From Hurricane Damage	Malinda Sutor
121	Corin Knight	Ecology of Viruses in Hydrothermal Vents	Ariel Petchel
117	Colton Krauss	Estimation of Lytic and Lysogenic Viral Infections in Bacteria in the Northern Gulf of Mexico	Sophie Jurgensen
103	Sophia Lingo	Benthic Fluxes of Silica Across Hydrogeomorphic Zones in an Active Coastal Deltaic Floodplain Within the Mississippi River Delta	Robert Twilley
115	Donovan McCall <b>SM</b>	Impact of Battery Leaching on Plant Growth	Malinda Sutor
100	Skylar McLeod <b>L</b>	Water Quality Monitoring in an Urban Lagoon, Audubon Park Lagoon, New Orleans, LA, USA	Philip Bucolo
127	Sierra Moran	Assessing Existing Research on Indicator Benthic Species Within Barataria Estuary, LA, to Support Restoration Efforts of Biotic Resources in the Region	Melissa Baustian

# POSTERS

Afternoon Session | 1:00 - 3:00 PM | Royal Cotillion Ballroom, Room 250

## COAST & ENVIRONMENT

#	Student	Title	Mentor
119	Aine O'Nuanain	Decomposition Rates of <i>Spartina alterniflora</i> in Coastal Louisiana Natural and Created Brakish Marshes Influenced by a Freshwater Siphon	Michael Polito
123	Andrew Schwartz	Monitoring of <i>Vibrio vulnificus</i> and <i>Vibrio parahaemolyticus</i> in Oysters	Crystal Johnson
125	Anna Stebbins	Can Freshwater Flooding be Detected in Eastern Oysters ( <i>Crassostrea virginica</i> ) Using Shell Barium to Calcium Ratios as an Environmental Proxy?	Kristine DeLong
105	Malaysia Young, Daviah Glover <b>SM</b>	Ocean Acidification: The Effect of Changing pH on Oyster Shell Health	Malinda Sutor



Past Discover Day



# POETRY READINGS

10:15 - 10:45 a.m. | Feliciano, Room 208

<u>Time</u>	<u>Student</u>	<u>Title</u>	<u>Mentor</u>
10:15	Exquisite Williams	"Tales from Ladouleur": Fictive Grief and Blackness Through the Lens of Fairytales	Maurice Ruffin
10:30	Adam Richards	Crucifixions	Robert McKinnon

# ORAL PRESENTATIONS

## VIEUX CARRÉ, ROOM 325

### Morning Session

<u>Time</u>	<u>Student</u>	<u>Title</u>	<u>Mentor</u>
8:45	Paola Colmenares	Not Your Average Bildungsroman: An Analysis of Maria dos Prazeres and Her Unconventional Character Arc	Carmela Mattza
9:00	Kaya Lewis	Young Black Poets of Baton Rouge	Nikita Carney
9:15	Devon Miller I	"To Write About the Country": Comparing the Geography in Ernest Hemingway's "Big Two-Hearted River" and Cézanne's "Rocks in the Forest"	Joseph McMullen
9:30	Kaylee Sadler UL	Penelope's Voice: A Study of Trauma in Meadowlands	Will Rogers
9:45	<b>BREAK</b>		
10:00	Ethan Aguillon	Evaluating the Impact Athlete Endorsements Have on Brand Attitudes: the Role of Congruence and the Moderating Role of Consumer Personality.	Dan Rice
10:15	Samuel Camacho	Efficiency Challenges of Managed Retreat ~ Evidence from FEMA Buyouts of Flood Prone Properties	Abigail Peralta
10:30	Madison Craig	Attitudes, Purchases, and Usage of Lingerie among College Women	Kris Lindsey Hall
10:45	Sydney McGovern	Analyzing the Effects of Gender on Public Evaluation of Elected Officials' COVID-19 Responses	Nathan Kalmoe
11:00	<b>BREAK</b>		
11:30	Ranna Okeil	Long-Run Effects of Louisiana's Cadastral Systems	Daniel Keniston
11:45	Mimi Rivette	Reducing Recycling Contamination through Nudge	Jerrod Penn
12:00	Fredlicia Phillips	African American's Perception of Cultural Appropriation of Whites In The Media	Meghan Sanders



# ORAL PRESENTATIONS

## VIEUX CARRÉ, ROOM 325

### Afternoon Session

<u>Time</u>	<u>Student</u>	<u>Title</u>	<u>Mentor</u>
1:00	James Anderson	Nutrient Dynamics in Deltaic Wetlands: Implications for Restoration Designed for Saving the Louisiana Coast	John White
1:15	Olivia Hurley	<i>Phragmites australis</i> Sexual Reproductive Effort: Potential for Hybridization and Recovery Following Die-back in the Lower Mississippi River Delta	Austin Lynn
1:30	Hannah Laville	How Plant Damage Influences the Dispersal and Colonization of the Salvinia Weevil? Implications for Biological Control	Rodrigo Diaz
1:45	Jackson Martingayle	Nutrient Availability, Flooding Stress, and Salinity Stress Interaction in Growth of <i>Avicennia germinans</i> [L.] L. Seedlings	Andy Nyman
2:00	Jacob Reinhardt	Wind-Driven Water Level Variability in Barataria Bay	Matthew Hiatt
2:15	Jacob Reinhardt	Cold Front Driven Water Level Variability in Wax Lake Delta	Matthew Hiatt
2:30	<b>BREAK</b>		
3:00	Lillian Powell, Heejoon Shin <b>BM</b>	Laplacian Spectra and Graph Indexes for Lattices	Rui Han
3:15	Ashley Patron	Understanding the Effect of Earthquakes on the Lock State of LIGO Detectors	Gabriela Gonzalez
3:30	Harrison Gietz	Using Bayesian Machine Learning to Estimate Differential Equations	Arnab Ganguly

## CAPITAL CHAMBER, ROOM 329

### Afternoon Session

<u>Time</u>	<u>Student</u>	<u>Title</u>	<u>Mentor</u>
1:00	Nathan Zeringue	Increasing versatility and recyclability of Additive Manufacturing by utilizing EPDM/PP Thermoplastic Vulcanizates	Jimmy Lawrence
1:15	Mustafa Alam	A Rheotactic Microfluidic Device for the Evaluation of Zebrafish Sperm Quality	Todd Monroe
1:30	Allie Brooks	Multiphysics Numerical Modeling of Electromagnetic-Driven Thermochemical Conversion of Biomass	Dorin Boldor
1:45	Ghalib Siaka <b>MN</b>	Simulation of Hurricane Force Wind And Its Impacts on Residential Buildings	Ning Zhang
2:00	Parker Hannan, Chloe Heitmeier	Cell-Free Reprogramming Monolignol Biosynthetic Pathway	Yongchan Kwon
2:15	Emmaline Miller	A Circulating Co-Culture Microfluidic Device for the Dynamic Sampling of Paracrine Factors	Adam Melvin

# ORAL PRESENTATIONS

## FELICIANA, ROOM 208

### Morning Session

<u>Time</u>	<u>Student</u>	<u>Title</u>	<u>Mentor</u>
8:45	Sarena Chambliss	Getting to the "Core" of Internet Aesthetics	Jeremy Bernardoni
9:00	Madeline Dykhouse	Janáček's Kreutzer Sonata - The Programmatic Drama of Leoš Janáček's First String Quartet	Brett Boutwell
9:15	Lily Grado <b>MS</b>	The Effect of Mental Illness on the Physical Body in Lars von Trier's Antichrist	Jenna Altomonte
9:30	Tyler Kuykendall	Poison to You, Purpose to Me: Candice Lin's Reclamation of Colonial Toxicity	Allison Young
9:45	Carsyn Shirk	Juba and the Bones: A Look into a Silent Past	Brett Boutwell
10:00	Carsyn Shirk	Uplifting Sonata Form: Performance Practice and Florence Price's "Sonata in E Minor"	Olivia Lucas
10:15	<b>Poetry Readings</b>	See top of page 14 for more information.	
11:00	Jackson Butterbaugh	Louisiana French Oral Histories: Témoignages du Passé, Tremplins vers L'Avenir	Erin Segura
11:15	Eric Cortes-Kopp <b>H</b>	A Threat to Order: Colonial, Nationalist, and Contemporary Approaches to Gender Making	Lisa Trivedi
11:30	Claire Maurer <b>D</b>	From Franco's Nightmare to a Globalized Spain	Dosinda Alvite
11:45	Emily Webre	Foundational Cultures of Modern Spain	Laura Martins

### Afternoon Session

<u>Time</u>	<u>Student</u>	<u>Title</u>	<u>Mentor</u>
1:00	Allison Cannon	Cytokine Expression in Resistant and Tolerant House Sparrows to Experimental Avian Malaria Inoculation	Christine Lattin
1:15	Khoivu Nguyen	Coxofemoral Hip Extended Radiographs Alter Joint Volume	Mandi Lopez
1:30	Sarah Lackey	Whole Blood Transcriptome Analysis of Insulin Sensitive and Insulin Dysregulated Horses	Erin Oberhaus
1:45	Cara Ramos	Reproductive Tradeoffs Govern Sexually Dimorphic Tubular Lysosome Induction in <i>Caenorhabditis elegans</i>	Alyssa Johnson
2:00	Elizabeth Reich	Development of a Single-Piece Sperm Counting Chamber (SSCC) for Aquatic Species	Todd Monroe
2:15	Hunter Stewart	Lungs of Female Mice Exposed In Utero to Cool Mint-Flavored Puff Bar Aerosol Have Increased Susceptibility to Th2-Mediated Immune Responses and Greater Functional Decline following House-Dust Mite Exposures	Alexandra Noel
2:30	Carmelle Walker	The Effect of Media and Incubation Temperature on Capacitation of Frozen/Thawed Equine Spermatozoa	Fabian Diaz
2:45	Maia Williams	De Novo Tendon Neotissue from Equine Adult Stem Cells	Mandi Lopez
3:00	Emily Otken	Microbial Colonization Mediates Sympathetic Neuronal Development in Mice with Experimental Bronchopulmonary Dysplasia	Stephania Cormier

# ORAL PRESENTATIONS

## INTERNATIONAL, ROOM 303

### Morning Session

<u>Time</u>	<u>Student</u>	<u>Title</u>	<u>Mentor</u>
8:30	Abigail Bowers	Analysis of Black Law Enforcement Perspective on Police Culture Post-Ferguson	Jose Torres
8:45	Kennedy Butler	A Regional Specific Analysis of Brain Structure based on Food Deserts and Other Compounding Risk Factors Across Low SES Communities using sMRI	Julie Schneider
9:00	Lillian Davis <b>SU</b>	The Effects of Cultural Misorientation, Need to Belong, and Narcissism on Body Modification among African American Female Students	Reginald Rackley
9:15	Grace Keller	Exploring How Gender Shapes Young People's Attitudes Toward Affirmative Consent Policies	Sarah Becker
9:30	Akua Lewis	Disasters and Race in Sociology: Vulnerability, Intersectionality, and Perceptions	Kevin Smiley
9:45	<b>BREAK</b>		
10:00	Anna Rockett	Leadership and Training Amidst Conflict: Community-Based Organizations in Myanmar	Oliver Crocco
10:15	Annie Sheehan-Dean	The Effect of John Henryism Active Coping on Protest Participation	Jas Sullivan
10:30	Khyler Sims <b>DU</b>	Capital Punishment: Effective or Not?	Ashraf Esmail
10:45	Xaria Taylor <b>SU</b>	The Effects of Cultural Mistrust on Attitudes Towards Police	Reginald Rackley
11:00	Cole Tilley	Court Legitimacy and the Shadow Docket	Elizabeth Lane
11:15	Ugonna Njoku	The Social Boot: Recollections from Another Side	Nikita Carney
11:30	Bailey Malveaux	How Afrocentric Features and Skin Color Affect the View of Black Men in the American Criminal Justice System	Lori Martin

### Afternoon Session

<u>Time</u>	<u>Student</u>	<u>Title</u>	<u>Mentor</u>
1:00	Sanaa Alam	Acute Oxidative Stress Induces Tubular Lysosome Formation and Extends Lifespan in <i>C. elegans</i>	Alyssa Johnson
1:15	Mary Grace Beck	Type I Diabetes Results from Immune Cell Invasion into Pancreatic Islets	Jason Collier
1:30	Hannah Blackmon	The Mechanism by Which Toxic Stress, Caused by Adverse Childhood Experiences (ACEs), Influence Inflammatory Response and Telomere Length Leading to Long-term Diseases and Disorders	Grover Waldrop
1:45	Ashlan Derouen	Risperidone and Sucrose Preference: A Possible Link to Understanding SGA-Induced Obesity	Paul Soto
2:00	Zalaila Laird, Megan Sumera <b>L</b>	The Role of Protocadherin in Cancer	Amrita Datta
2:15	<b>BREAK</b>		

# ORAL PRESENTATIONS

## INTERNATIONAL, ROOM 303

### Afternoon Session Cont.

<u>Time</u>	<u>Student</u>	<u>Title</u>	<u>Mentor</u>
2:30	Cale Locicero	Stereoselective Synthesis of $\alpha$ -Quaternary $\alpha'$ -Hydroxyketones	Rendy Kartika
2:45	Renee Rumsey	Substrate Oxidation in Girls	Nicole Fearnbach
3:00	Blaire Peterson	Investigation of the Molecular Mechanism Employed by Acetyl-CoA Carboxylase	Grover Waldrop
3:15	Analisa Taylor	Pharmacological Extension of Lifespan via Mitochondrial Uncoupling in <i>Drosophila melanogaster</i>	Christopher Axelrod
3:30	Zahra Vafaei Naeini	Revealing the Role of Puratrophin-1 Like in <i>Drosophila</i> Salivary Gland Formation	SeYeon Chung
3:45	Hannah Cheng, Miscia Fortna	The Feasibility of Super Absorbent Polymer Beads as Phantom Material & Microdosimetric Measurements	Wayne Newhauser

## CASTILIAN, ROOM 304

### Morning Session

<u>Time</u>	<u>Student</u>	<u>Title</u>	<u>Mentor</u>
8:30	Abigail Baumgartner	"What's Wrong With Us?"; Using Psychological Criticism in the High School Literature Classroom	Robyn Andermann
8:45	Taria Dearbone <b>SU</b>	The Effects of Cultural Misorientation and Need to Belong on Hazing Attitudes among African American College Students	Reginald Rackley
9:00	Claire Inderkummen	Changes in Girls' Educational Opportunities in Former Afrique Occidentale Française (AOF) States Since Independence (1960)	Gibril Cole
9:15	Georgette Metrailler	Returning to School: Teachers' Occupational and COVID-19-Related Stress and Their Perceptions of School Climate	Kelly Clark
9:30	Zachary Robinson	Developing Technological and Information Literacies in the Undergraduate Classroom	Petra Robinson
9:45	Kaylee Smith <b>BU</b>	Perceptions of Adaptive Materials in the Elementary Music Classroom in Pre-service and In-service Educators	Kelly Jo Hollingsworth
10:00	David Spicer <b>M</b>	Prepared to Believe? Evaluating the Impact of Louisiana's Believe and Prepare Program	Sarah James
10:15	Ania Wellere <b>D</b>	The Impact of Stress On The Academic Performance of Black College Women At Predominantly White Institutions (PWIs)	Karen Powell-Sears
10:30	<b>BREAK</b>		

# ORAL PRESENTATIONS

## CASTILIAN, ROOM 304

### Morning Session Cont.

<u>Time</u>	<u>Student</u>	<u>Title</u>	<u>Mentor</u>
10:45	Jada Carter <b>SU</b>	The Effects of Mutual Gazing on Loving and Liking among African American College Students	Reginald Rackley
11:00	Juston Marshall <b>SU</b>	The Effects of Tactile Contact and Pleasant Odor on Helping Behaviors	Reginald Rackley
11:15	Ann-Elise Mitcham	The Impact of Trait Anxiety on Long-Term Memory	Matthew Calamia
11:30	Lealer Robertson <b>SU</b>	Effects of Time of Day and Sexual Orientation on Helping Behavior	Reginald Rackley
11:45	LaDasha Turner <b>SU</b>	The Effects of Cultural Misorientation and Self Esteem on Skin Tone Preference and Interpersonal Attraction Among African American College Students	Reginald Rackley
12:00	LeBria Massey <b>SU</b>	The Effects of Cultural Misorientation, and African self-consciousness has on skin and hair bleaching among African American female college students	Reginald Rackley

# VIRTUAL PRESENTATIONS

11:00 - 11:45 a.m. | Online via Zoom

Please visit [www.lsu.edu/discover/events/index.php](http://www.lsu.edu/discover/events/index.php) for more information and to find the Zoom link.

<u>Time</u>	<u>Student</u>	<u>Title</u>	<u>Mentor</u>
11:00	Evan Leonhard	Aesthetics on Trial: Tracking Tensions between Beauty and Justice in Recent Literary Theory	Michelle Zerba
11:15	Divyanshi Singhal <b>T</b>	The Local Financial Impact of the Paycheck Protection Program: County Level Determinants	Swaminathan Kalpathy
11:30	Pratima Pinnepalli <b>SA</b>	Forget Hello	Conor Stechschulte

# GUEST PRESENTATION

12:00 - 1:00 pm | Capital Chamber, Room 329

## MY JOURNEY FROM LSU TO NASA GLENN'S CONCEPT EVOLUTION IN ELECTRONICS AND INSTRUMENTS LAB

Chrissy Adams, LSU Alum & Electronics Engineer at NASA Glenn Research Center

# VISUAL DISPLAYS

Afternoon Session | 1:00 - 3:00 PM | Royal Cotillion Ballroom, Room 250

<b>#</b>	<b>Student</b>	<b>Title</b>	<b>Mentor</b>
1	Anna Borne	Integrative Taxonomy of Polylepis Sky-Island Birds: Quantifying Variation in Morphometrics, Song, and Plumage	Nicholas Mason
183	Gabrielle Chaisson, Hannah Robert <b>N</b>	Saving the Ghosts Within	Nicki Boudreaux
173	Thomas Coreil, Luna Lawes, Stefano Dardano, Allison Zieschang	Neo-Tissue Injection Device for Tendon Recovery	Mandi Lopez
3	Marie Drozda	Variations in Sex-Steroid Receptor Levels in the Jaw Muscle Across Reproductive States in the Mouthbrooding Cichlid Fish, <i>Astatotilapia burtoni</i>	Karen Maruska
185	Bryan Edwards	A Time-and Cost-Effective System for Automated Dechoriation of Zebrafish Embryos	Ahmed Abdelmoneim
11	Madison Gregory	How do Service Animals help a Veterans' Mental Health?	Stephanie Johnson
171	Caleb Gryder	The Potential of Triboelectric Nanogenerators	Jin Woo Choi
9	Kameelah Hollis	Constructed Floating Wetland	Brian Snyder
181	Anil Khatri, Naresh Neupane, Aaditya Ranjan Mahato, Nischal Khadka <b>MN</b>	Design of a Collaboration System for Planetary Rovers	Bei Xie
179	Michael Martin	Real-time Extrudate Scanning Technique for Construction 3D Printing	Ali Kazemian
177	Jada Perkins <b>SU</b>	The Effects of Cultural Mistrust and Spirituality on the Resistance to take the COVID-19 Vaccine among African Americans College Students	Reginald Rackley
167	Camille Robertson	Cosplay as It Relates to Self Identification: Circumvention and Enhancement	Jeremy Bernardoni
7	Ria Salway, Claire Sullivan	Louisiana's Cancer Alley: The Human Consequences of Petrochemical Pollution	Linda Hooper-Bùi
5	Anna Catherine Strong, Bridget Seghers	Species in Scarcity	Granger Babcock
175	Madeline Thomas	Establishing an Energy-Smart Office by Developing an Occupant-Centric Energy Management System	Amirhosein Jafari
187	Charity Williams	The Effects of Media Representation on Black Civic Engagement	Nathan Kalmoe



# STUDENT PANELS

## MAGIC, THE PARANORMAL, AND AMERICAN CULTURE

1:00 - 3:00 PM | Moderated by Dr. Kenny Smith | Red River, Room 323

<b><u>Student</u></b>	<b><u>Title</u></b>
Emily Webre	The Orientations of Eternals
Christian Bouton	Magic, Religions, and Popular Culture
Baron Hingle	The Hidden Power of the Mind
Kayce Robinson	The Need for a Multidisciplinary Approach to the Paranormal
Simone Schomberg	To Have Faith

## HOW TO CHANGE THE WORLD

3:00 - 5:00 PM | Moderated by Dr. Kenny Smith | Red River, Room 323

<b><u>Student</u></b>	<b><u>Title</u></b>
Allison Allsop	Opening Communication about Women's Safety on Campus
Isabella Hommel	Social Change Project
Kamryn Passman	The Demand for Inclusion
Zoe Patton	Cards for Custodians
Kenneth Tarleton	Targeted Social Change Project
Cartie Whitelaw	Art Therapy Methods: Effects on Anxiety Levels of Advanced College Students

## DISCOVERING AFRICAN ART

3:00 - 5:00 PM | Moderated by Dr. Darius Spieth | Castilian, Room 304

<b><u>Student</u></b>	<b><u>Title</u></b>
Shelby Aydell	Akan Akua'ma: Art More Complex than Fertility Dolls
Neely Bourgoyne	The Sande Society
Evan Crocker	Grebo-Kru Masks of Liberia & Their Influence on Modern Art
Robert Haik	The Benin Bronzes: The Looting of an Entire Nation's Treasures
Sophia Perkins	Chokwe Art and Mukanda Initiation Rituals

# FACULTY PANELS

Student presenters and guests are invited to attend these faculty panels to learn more about pursuing a career in research. Panelists will include LSU faculty members from a variety of disciplines. Each panel is hosted and moderated by Research Ambassador Kameelah Hollis.

## Faculty Panel A: Pursuing Research Careers in Humanities, Social Sciences & the Arts

3:15 - 4:15 PM | Capital Chamber, Room 329

## Faculty Panel B: Pursuing Research Careers in STEM Disciplines

4:30 - 5:30 PM | Capital Chamber, Room 329

---

## RESEARCH AMBASSADORS

Research Ambassadors are LSU undergraduate researchers who encourage and assist other students in getting involved in undergraduate research opportunities. The ambassadors take part in a variety of activities including, but not limited to: talking to classes/student orgs/freshmen groups, volunteering at research-related events, and mentoring students looking for research opportunities.

Students interested in undergraduate research may contact a Research Ambassador directly with questions. Research Ambassadors are also available to speak to student organizations or classrooms. If you have questions about the program you can contact them at [LSUresearchambassadors@gmail.com](mailto:LSUresearchambassadors@gmail.com)



*Research Ambassadors Fall 2021*

# STUDENT ART SHOW

4:00 - 6:00 p.m. | Magnolia, Room 301

<b><u>Student</u></b>	<b><u>Title</u></b>	<b><u>Media</u></b>	<b><u>Mentor</u></b>
Kaylee Cummings	Eyes Closed: A Different Perspective	Linoleum Print	Leslie Koptcho
Jaden Degeyter	For Her	Wood, Plaster, Rope, Acrylic	Gillian Harper
Adrianna Hawkins	Comedown	Plaster	Gillian Harper
Alexis Manuel	The Crowd	Acrylic Paint	Edward Smith
Mark Muguga	THINKING WOMAN	Charcoal, Acrylic Paint	Edward Smith
Pratima Pinnepalli <b>SA</b>	Forget Hello	Risograph and Offset Printing	Conor Stechschulte
Christan Rios	IRONY	Oil Paint	Darius Spieth
Christan Rios	Demon's Arrogance	Lithography	Darius Spieth
Christan Rios	Self Portrait	Oil Paint	Darius Spieth
Chloe Smith	Body Dysmorphia and the Beauty of Flaws	Lithography, Screen Printing, Papermaking	Leslie Koptcho
Anna Wright	I Know Your Love is Limited	Mixed Media	Kelli Kelley



Past Discover Day

# KEYNOTE SPEAKER

Dr. Michelle Zerba

Join us at 6:00 p.m. in the Atchafalaya, Room 339 to hear Dr. Zerba's keynote speech



Michelle Zerba is Maggie B. Martin Professor of Rhetoric and Classical Studies and has a split appointment in the Departments of English and World Languages and Literatures. Her research and teaching span the fields of Greek and Roman literature, philosophy, and rhetoric; Renaissance drama and political theory; and classical reception. She is especially interested in questions that emerge at the intersection of antiquity and modernity.

She has held grants from the National Endowment for the Humanities, the American School of Classical Studies at Athens, the Partnership University Fund of the French Government, and the American Association of University Women. Her publications include *Tragedy and Theory* (Princeton), *Doubt and Skepticism in Antiquity and the Renaissance* (Cambridge), *Modern Odysseys: Cavafy, Woolf, Césaire and the Poetics of Indirection* (Ohio State University Press), and *the Norton Critical Edition of Aristotle's Poetics*. She is currently writing a book entitled "The Origins of Mystery: A Cultural History of the Eleusinian Mysteries."

---

## LSU DISCOVER STAFF

Dr. Jacqueline Bach, *Interim Director*  
Sarah Ferstel, *Associate Director*  
Tori Clement, *Office Coordinator*  
Darian McGehee, *Graduate Assistant*  
Julia Ardoin, *Student Worker*  
Dakota Babin, *Student Worker*

# SPECIAL THANKS

LSU Discover thanks all of the individuals and groups who contributed to the success of LSU Discover Day 2022. In particular, we thank our keynote speaker, Dr. Michelle Zerba, and our faculty panel moderator, Kameelah Hollis. Thanks to John Quebedeaux at LBRN for the poster stands and to Lisa Schuetz at the Student Union for venue coordination. We are also greatly appreciative of our volunteers, judges, the Research Ambassadors, and the LSU Discover staff for their assistance with the coordination of this event.

## THANK YOU

### LSU Discover Faculty Advisory Board

Mike Benton, *College of Engineering*  
Jeremy Bernardoni, *College of Music and Dramatic Arts*  
Michael Blandino, *Ogden Honors College*  
Arendam Chanda, *E.J. Ourso College of Business*  
Patrick DiMario, *College of Science*  
Lake Douglas, *College of Art + Design*  
Joseph Francis, *School of Veterinary Medicine*  
Arend Van Gemmert, *College of Human Sciences & Education*  
Joseph Givens, *McNair Scholars Program*  
Giulio Mariotti, *College of the Coast & Environment*  
Janet McDonald, *College of Humanities & Social Sciences*  
Hyojung Park, *Manship School of Mass Communication*  
Wenqing Xu, *College of Agriculture*

LSU Discover Day is also open to participants from other colleges.  
Thank you to the following colleges & schools for participating:

Baton Rouge Community College  
Baton Rouge Magnet High School  
Baylor University  
Denison University  
Dillard University  
Edgewood College  
Hamilton College  
Indiana University Bloomington  
Louisiana State University Eunice  
Loyola University New Orleans  
Massachusetts Institute of Technology

McNeese State University  
Mississippi State University  
Nicholls State University  
School of Art Institute of Chicago  
Scotlandville Magnet High School  
Southern University and A&M College  
Texas Christian University  
The University of Texas at Tyler  
University of Louisiana at Monroe  
Westminster College



# MARC PROGRAM

LSU Discover is enormously grateful to the Maximizing Access to Research Careers (MARC) program for their generous financial contribution to Discover Day 2022.

The LSU MARC Program provides high-impact research experiences to a diverse pool of undergraduates and prepares them for entry into graduate programs in the biomedical and behavioral sciences. The LSU MARC Program offers research training, personal and career development, financial support, mentoring, networking opportunities and academic preparation for motivated students. They aim to produce highly skilled, competitive, and productive young scientists who will fill a national need, and enhance LSU student inclusion and diversity, retention and graduation rates, collaborative research, community engagement and outreach activities.

LSU MARC is supported by the National Institute of General Medical Sciences of the National Institutes of Health under award number T34GM136452.

Applications are accepted through late March.

To learn more about MARC, visit [marc.lsu.edu](http://marc.lsu.edu)





# DISTINGUISHED UNDERGRADUATE RESEARCHER PROGRAM

The LSU Distinguished Undergraduate Researcher designation recognizes the achievements of outstanding LSU undergraduates who participate in a track of educational and research activities leading to a final and public presentation or publication of a faculty-mentored undergraduate scholarly project. An LSU Distinguished Undergraduate Researcher is a student who has demonstrated outstanding ability as an advanced student researcher in their discipline. Distinguished Researchers will be honored at a special medal ceremony in their graduating semester and the designation will be noted on their transcripts.

LSU undergraduates from any major are eligible to enroll in the program before their final semester at LSU.

Before enrolling, interested students must attend a one-hour orientation session. The next orientation will be held on Friday, May 6th from 3:30- 4:30 PM in Allen 139.

For more information, visit:

<https://lsu.edu/discover/students/distinguished-undergraduate-research-program.php>



*Spring 2019 DURP Awardees*

# LSU

---

## Discover Undergraduate Research Program

[lsu.edu/discover](https://lsu.edu/discover)



LSU.Discover



@LSUDiscover



@LSUDiscover